





A luxury brand new detached house on gated development.

- New Executive Detached Home
- 1,800ft² Accommodation
- Four Bedrooms & Dressing Room
- Two Luxury Bath/Shower Rooms
- Lounge
- Kitchen, Dining & Family Room
- Garage & Double Driveway

Description

A brand new, executive detached home on gated development, which is due for completion late summer 2022. The property is one of three and the site is located in sought after Salterswall, on the edge of Winsford towards Whitegate Village. In all the accommodation extends to over 1,800ft² (168m²) and comprises Entrance hall with two built-in cupboards, cloakroom/WC, large lounge, living kitchen dining room, utility room and garage on the ground floor along with a landing, master bedroom with dressing room and en-suite bathroom, three further double bedrooms and bathroom on the first floor. Externally there are front and rear gardens and parking for at least two cars in front of the garage.



Location

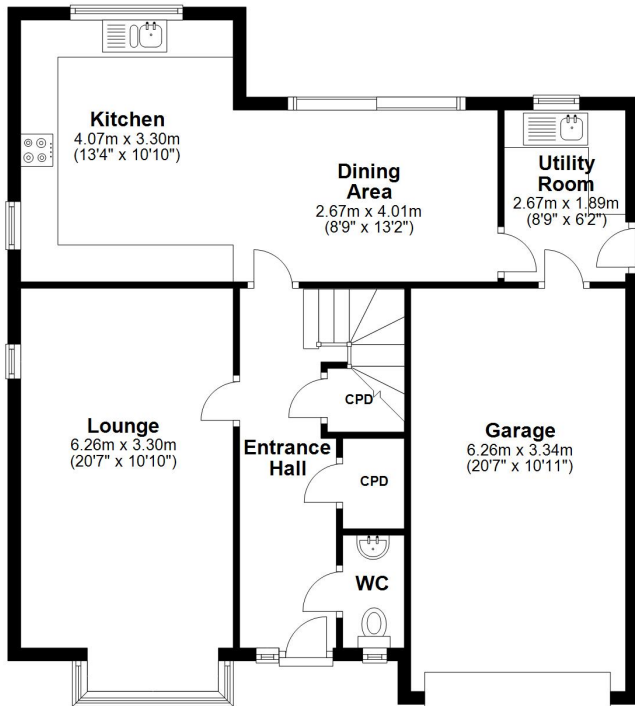
Salterswell is a small area towards the end of Chester Road in Winsford on the way to Whitegate Village and is synonymous with the large detached houses which adorn both sides of the road. There is a good selection of local amenities including shops and schools and the town centre has a wider range of everyday facilities. The West Coast Main Line service runs through Winsford enabling access to London within two hours. Trains to Manchester and Chester run from Cuddington, Greenbank and Northwich railway stations.

Tenure

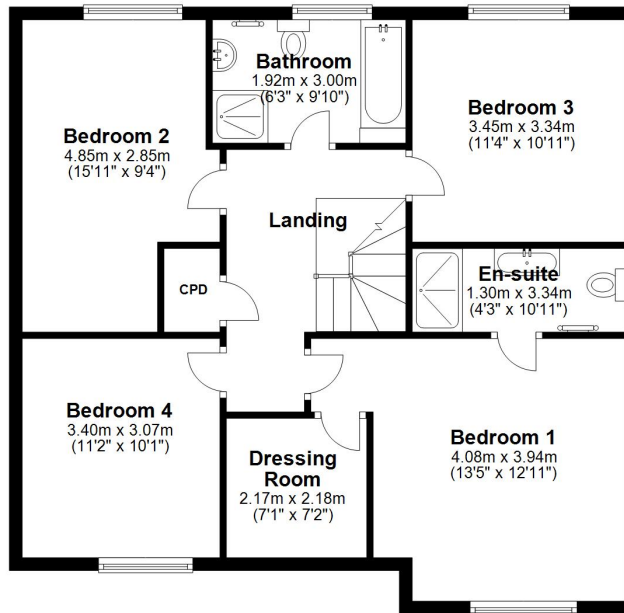
FREEHOLD

EPC Rating:

Ground Floor
Approx. 86.8 sq. metres (934.3 sq. feet)



First Floor
Approx. 80.8 sq. metres (869.8 sq. feet)



Total area: approx. 167.6 sq. metres (1804.1 sq. feet)

