



139 Barnhorn Road, Bexhill-on-Sea, East
Sussex, TN39 4QL

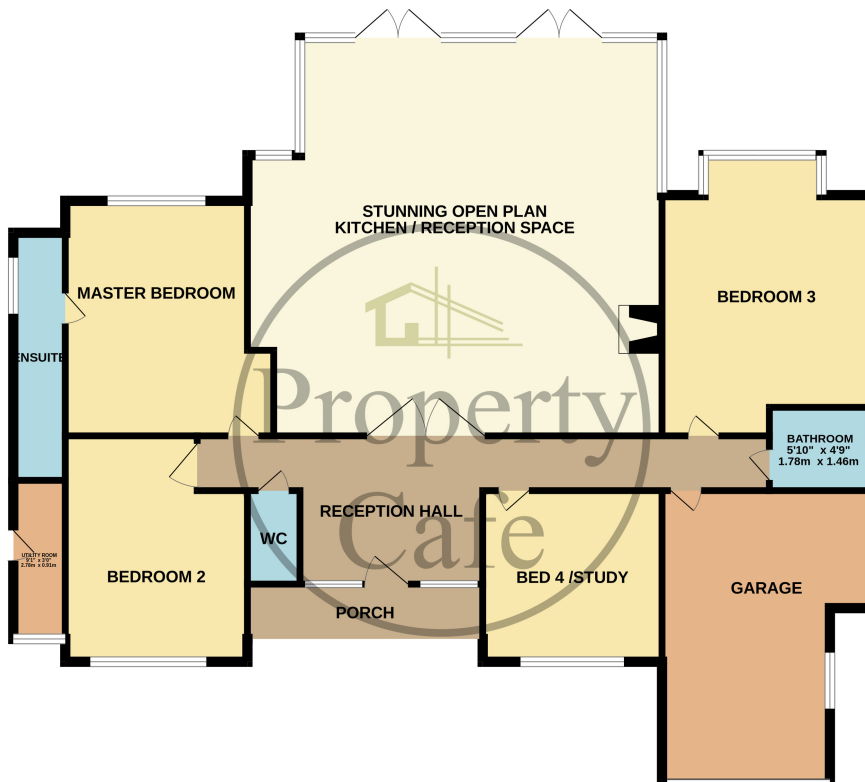
£700,000



- Four Bedroom Detached Bungalow
- Stunning Open Plan Living Space
- Modern Family Bathroom & Sep W.C
- Master Bedroom With En-Suite
- Immaculate & Bright Inner Hall
- Integral Garage With Roller Door
- Stunning South Facing Garden & Views
- Secure Gated Off Road Parking
- Immaculately Presented Throughout
- A Beautifully Presented Property
- Additional Scope To Extend
- Amazing Panoramic Coastal Views



GROUND FLOOR
1553 sq.ft. (144.3 sq.m.) approx.



TOTAL FLOOR AREA : 1553 sq.ft. (144.3 sq.m.) approx.

Whilst every attempt has been made to ensure the accuracy of the floorplan contained here, measurements of doors, windows, rooms and any other items are approximate and no responsibility is taken for any error, omission or mis-statement. This plan is for illustrative purposes only and should be used as such by any prospective purchaser. The services, systems and appliances shown have not been tested and no guarantee as to their operability or efficiency can be given.

Made with Metropix 03/2021

