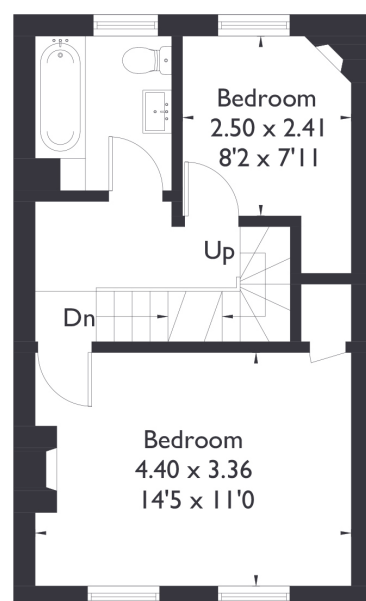


Bonchurch Road, W13

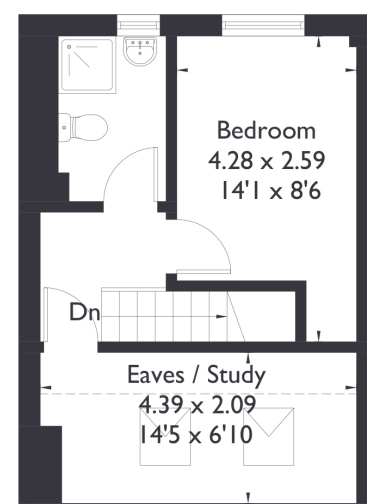
Approximate Floor Area = 107.8 sq m / 1160 sq ft
(Including Eaves)



Ground Floor



First Floor



Second Floor



3 BEDROOM HOUSE

Bonchurch Road, W13

£795,000

Welcome to this three bedroom, two bathroom terraced home, nestled in a highly sought after location. Boasting high ceilings and wonderfully spacious rooms, this property is flooded with natural light, creating a warm and inviting atmosphere. With two generous reception rooms and a separate kitchen at the rear, it offers an excellent layout and endless potential to make it your own.

FEATURES

- Three Bedrooms
- Two Bathrooms
- Separate Living And Kitchen
- West Ealing Station (Elizabeth Line)/ Northfields Station (Piccadilly Line)
- Potential To Extend Rear (STPP)
- On Street Parking
- EPC Rating D



3 BEDROOM HOUSE

Bonchurch Road, W13

One of its standout features is its prime location. Situated close to the vibrant amenities of Northfield Avenue, you'll enjoy a variety of shops, cafes, and restaurants at your doorstep.

For commuters, the convenience is unparalleled. West Ealing Station (Elizabeth Line) is just an 8 minute walk away, providing swift access to Central London, including Tottenham Court Road in just 19 minutes.

Additionally, Northfields Station (Piccadilly Line) is a mere 9 minutes away, offering seamless travel options. Whether you're looking for a comfortable family home or a property with great potential in an unbeatable location, this home offers the perfect combination of convenience, charm, and opportunity.

EPC Rating D.

