

FOR SALE

£345,000

Jubilee Drive, West Kirby, Wirral. CH48 5EF



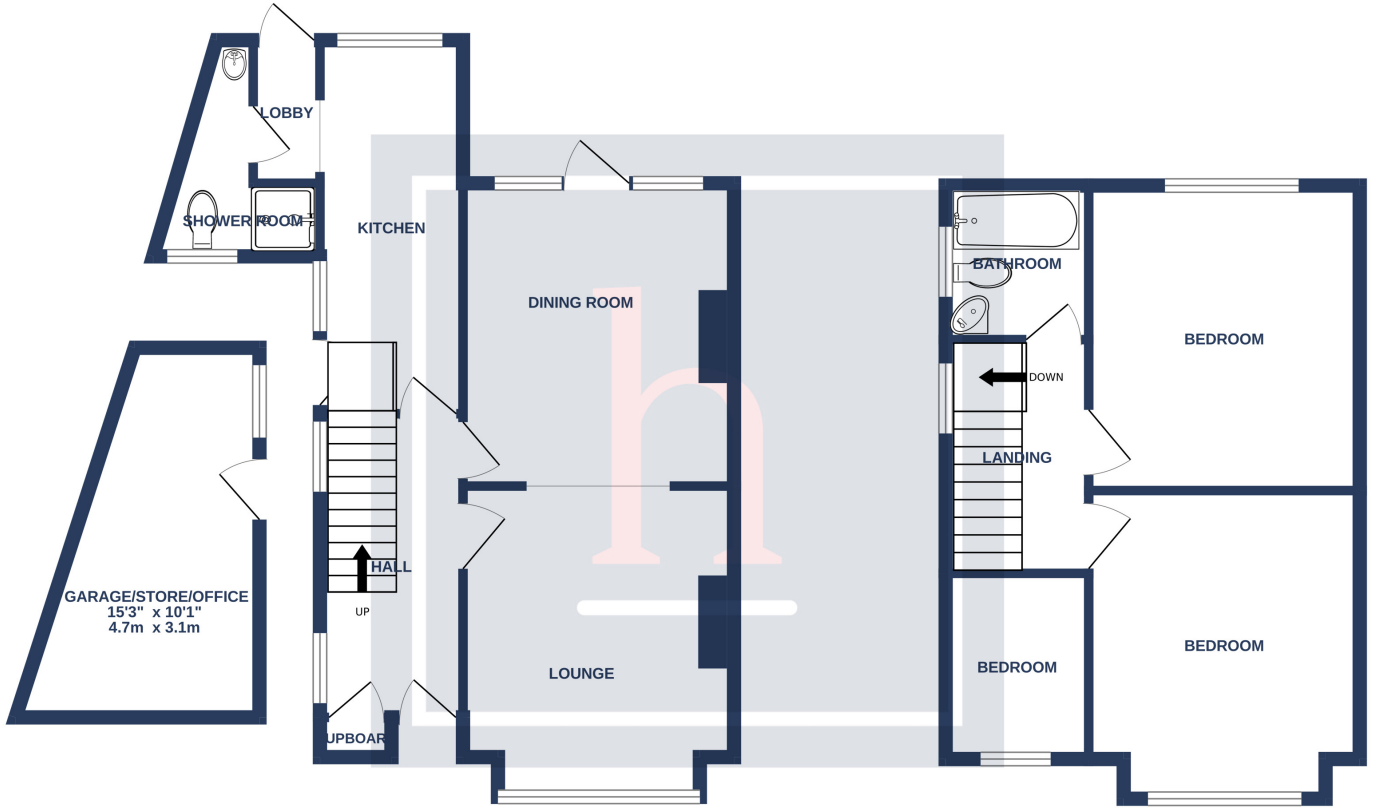
Sought-after family location! Situated on the ever popular Jubilee Drive in West Kirby is this impressive, three bedroom, semi-detached. Conveniently located just a short stroll away from the hustle and bustle of West Kirby, offering an array of bar, restaurants and shops, along with both primary and secondary schools and great transport links. This is certainly not one to be missed.





GROUND FLOOR
605 sq.ft. (56.3 sq.m.) approx.

1ST FLOOR
419 sq.ft. (38.9 sq.m.) approx.



TOTAL FLOOR AREA : 1024 sq.ft. (95.1 sq.m.) approx.

Whilst every attempt has been made to ensure the accuracy of the floorplan contained here, measurements of doors, windows, rooms and any other items are approximate and no responsibility is taken for any error, omission or mis-statement. This plan is for illustrative purposes only and should be used as such by any prospective purchaser. The services, systems and appliances shown have not been tested and no guarantee as to their operability or efficiency can be given.

Made with Metropix ©2024