

15 Buttermere Close

Folkestone
CT19 5JH

£300,000 FREEHOLD

FOR SALE WITH BURNAP + ABEL... Burnap + Abel are delighted to offer this three bedroom end of terrace house located in the sought after location of Buttermere close in the popular Lynwood Estate. This property needs renovation and comprises of a large lounge/dining room, Kitchen, Three bedrooms and a family bathroom. Additional benefits include integral garage and a large corner plot garden. For your chance to view call SOLE agent Burnap + Abel now on 01303 258590. Keys are available at your convenience.



Lounge/Dining room

18' 8" x 10' 7" (5.69m x 3.23m)

Kitchen

19' 2" x 6' 10" (5.84m x 2.08m)

Garage

16' 1" x 8' 0" (4.90m x 2.44m)

Bedroom

13' 0" x 8' 10" (3.96m x 2.69m)

Bedroom

12' 5" x 10' 7" (3.78m x 3.23m)

Family Bathroom

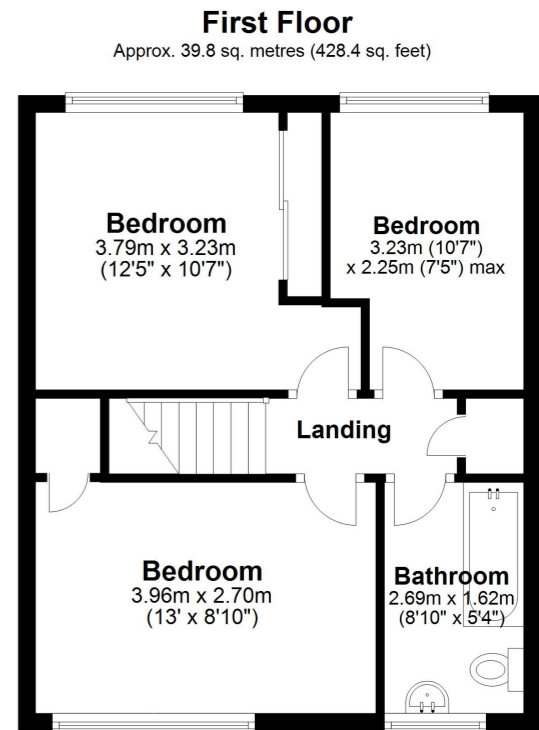
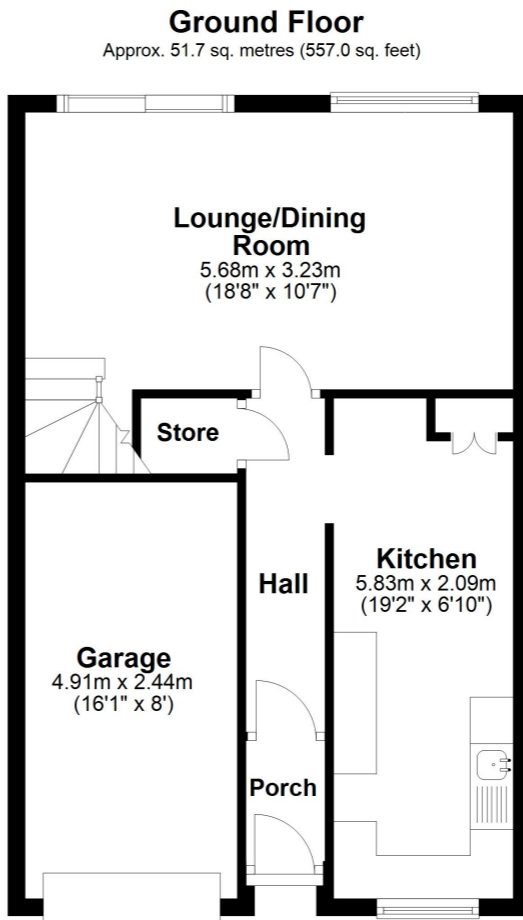
8' 10" x 5' 4" (2.69m x 1.63m)

Bedroom

10' 7" x 7' 5" (3.23m x 2.26m)

Garden

Driveway



Total area: approx. 91.5 sq. metres (985.4 sq. feet)

Whilst every attempt has been made to ensure the accuracy of the floor plan contained here, measurements of doors, windows, rooms and any other items are approximate and no responsibility is taken for any error, omission or mis-statement. This plan is for illustrative purposes only and should be used as such by any prospective purchaser.
Plan produced using PlanUp.

