

rodgers
estate agents



Lovel Road
Chalfont St Peter, Buckinghamshire, SL9 9NX



£699,950 Freehold

An extended semi detached house situated within easy walking distance of the village with all its amenities, Infant School, Church of England Academy, Chalfont Community College and within catchment of Dr Challoner's Grammar School. The property is in lovely order and an internal inspection is highly recommended to appreciate the space throughout. Offering superb family accommodation, on the ground floor there is an entrance hall, cloakroom, lounge, dining room, kitchen/breakfast room and a walk in utility cupboard. On the first floor there are four good size bedrooms, the master with an ensuite shower room, and a family bathroom. Further features include gas central heating, double glazing, off street parking for several cars and a westerly facing rear garden.

Entrance Hall

UPVC front door. Wall thermostat control. Under stairs cupboard units. Radiator with ornate cover. Stairs leading to first floor and landing.

Cloakroom

Modern white suite incorporating low level flush WC and corner wash hand basin with mixer tap and tiled splash back and cupboard under. Expel air.

Living/Dining Room

17' 8" x 11' 6" (5.38m x 3.51m) Double aspect room with double glazed leaded light window overlooking front aspect, and double casement doors with double glazed glass insets leading to rear. Fireplace with wooden mantle and granite hearth, with wood burning stove. Radiator.

Family Room

15' 9" x 10' 0" (4.80m x 3.05m) Wood flooring. Dimmer switch. Radiator. Double glazed leaded light window overlooking front aspect.

Kitchen/Breakfast Room

17' 10" x 9' 9" (5.44m x 2.97m) Well fitted with high gloss wall and base units. Granite effect work surfaces with tiled splash backs. One and a half bowl stainless steel sink unit with mixer tap and drainer. Fitted four ring gas hob with extractor hood over. Built in oven and grill. Built in fridge and freezer. Built in dishwasher. Two heated towel rails. Large cupboard unit housing wall mounted gas central heating boiler and slatted shelving. Tiled floor. Double glazed leaded light window overlooking rear aspect. Double casement doors with double glazed glass insets leading to rear. Door to:

Utility Room

Fitted with wall and base cupboard units. Granite effect work surface. Plumbed for washing machine. Radiator. Tiled floor. Double glazed leaded light window overlooking side aspect.

First Floor

Landing

Half galleried with access to loft.

Bedroom One

13' 11" x 10' 0" (4.24m x 3.05m) Wood laminate flooring. Radiator. Double glazed leaded light window overlooking front aspect. Door to:

En Suite Shower Room

Fully tiled with a modern white suite with walk in shower, low level WC, and wash hand basin with mixer tap and drawer units under. Expel air. Heated chrome towel rail. Velux double glazed opaque roof light.

Bedroom Two

13' 2" max x 9' 1" (4.01m x 2.77m) Built in wardrobe with cupboard unit over. Radiator. Double glazed window overlooking rear aspect.

Bedroom Three

11' 11" x 9' 1" (3.63m x 2.77m) Fitted double wardrobe. Airing cupboard with lagged cylinder and slatted shelving. Radiator. Double glazed leaded light window overlooking rear aspect.

Bedroom Four

8' 10" x 7' 3" (2.69m x 2.21m) Radiator. Double glazed leaded light window overlooking front aspect.

Bathroom

Half tiled with a modern white suite incorporating freestanding oval bath, low level WC, wash hand basin with drawer under, and walk in fully tiled shower. Expel air. Mosaic tiled floor. Heated chrome towel rail. Opaque double glazed leaded light window overlooking side aspect.

Outside

To The Front

Brick paved driveway providing off street parking for several cars. Hedge and wooden fence boundaries. Raised flower beds. Wooden garden shed. Storm porch. Outside light point.

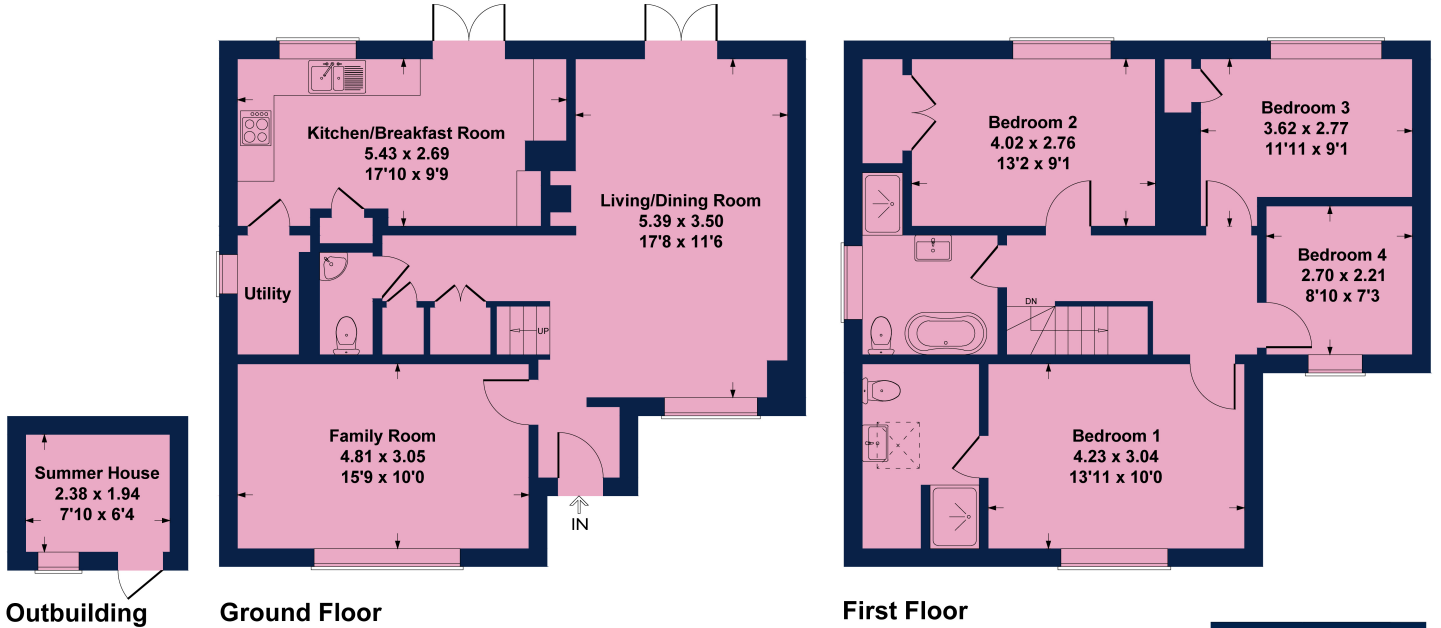
To The Rear

Large paved patio area with red brick retaining walls. Steps leading to garden area which is mainly laid to lawn with hedge and wooden fence boundaries. Flower bed borders. Brick pathways. Wooden summer house. Purpose built pizza oven. Pedestrian side access with wooden gate. Outside electrical point. Outside tap. Outside light point.



74 Lovel Road

Approximate Gross Internal Area
 Ground Floor = 64.7 sq m / 696 sq ft
 First Floor = 64.5 sq m / 694 sq ft
 Outbuilding = 4.6 sq m / 50 sq ft
 Total = 133.8 sq m / 1440 sq ft



Not to Scale. Produced by The Plan Portal 2024
 For Illustrative Purposes Only.



Important Notice: Rodgers Estate Agents give notice that their solicitors and any joint agents give notice that:

1. They are not authorised to make or give any representations or warranties in relation to the property either here or elsewhere, either on their own behalf or on behalf of their client or otherwise. They assume no responsibility for any statement that may be made in these particulars. These particulars do not form any part of any offer or contract and must not be relied upon as statements or representation of fact.

2. Any areas, measurements or distances are approximate. The text, photographs and plans are for guidance only and are not necessarily comprehensive. It should not be assumed that the property has all necessary planning, building regulation or other consents and Rodgers Estate Agents have not tested any appliances, equipment or facilities. Purchasers must satisfy themselves by inspection or otherwise.

Energy Efficiency Rating		Current	Potential
Very energy efficient - lower running costs			
(92+)	A		
(81-91)	B		
(69-80)	C		80
(55-68)	D	67	
(39-54)	E		
(21-38)	F		
(1-20)	G		
Not energy efficient - higher running costs			
England, Scotland & Wales		EU Directive 2002/91/EC	

30 Market Place
 Chalfont St Peter
 Buckinghamshire
 SL9 9DU

5 Park Lane
 Harefield
 Middlesex
 UB9 6BJ

csp@rodgersstates.com

harefield@rodgersstates.com

For further information or an appointment to view please call: Harefield 01895 823333 Market Place 01753 880333