



Offord Road, London, N1

£3,400
pcm



Offord Road, London, N1

A recently refurbished, bright and spacious two double bedroom apartment benefiting from a large private terrace. * Available End of November *Offered Unfurnished.

Arranged over the top two floors of this gorgeous building, this apartment offers in excess of 800 Sq Ft (74 Sq M) of internal space.

Offord Road is perfectly located close to a variety of local amenities, cafes and restaurants as well as Highbury & Islington Station (Victoria Line, Overground & Thameslink) with Barnsbury Station (Overground) also very close by.

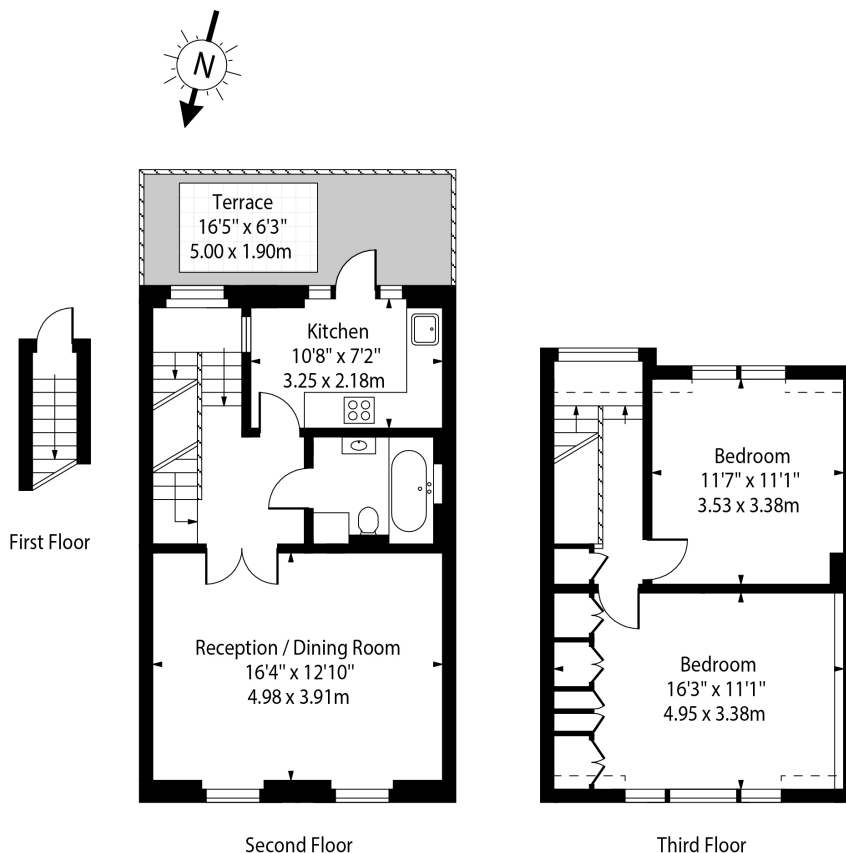
Features

- Two Double Bedrooms
- Split Level Apartment
- Large Private Terrace
- Brand Newly Refurbished
- Modern Kitchen
- Bright & Spacious Flat
- Local Amenities & Transport Links Close By
- Contemporary Bathroom
- Offered Unfurnished
- Available From End Of November 2024



Offord Road, London, N1

Offord Road, London, N1



Approx Gross Internal Area 814 Sq Ft - 75.62 Sq M

Approx Floor Area Including Restricted Heights 833 Sq Ft - 77.39 Sq M

For Illustration Purposes Only - Not To Scale Floor Plan by www.nogaphotostudio.com Ref: No.46745

This floor plan should be used as a general outline for guidance only. Any intending purchaser or lessee should satisfy themselves by inspection, searches, enquiries and full survey as to the correctness of each statement. Any areas, measurements or distances quoted are approximate and should not be used to value a property or be the basis of any sale or let.