



The Heights, Danbury, Chelmsford, Essex, CM3 4AG

Council Tax Band F (Chelmsford)

 4  4  2

£2,750 pcm

Please note online enquiries only, please email lettings@bondresidential.co.uk

STUNNING FAMILY HOME IN PRIME LOCATION

Nestled in a highly sought-after area, this exquisite family home offers the perfect blend of modern living and convenience. Situated close to Danbury Park School, woodland, and the picturesque Danbury Lakes, this property is ideal for those who enjoy leisurely strolls and outdoor activities. Boasting a corner plot, this light and airy home is presented in immaculate condition and is available immediately.

ACCOMMODATION

As you step inside, you are greeted by a spacious entrance hall leading to a wonderful open-plan layout featuring a generous dining area with bi fold doors leading out to the rear paved terrace. The dining area opens into a spacious bespoke fitted kitchen with a combination of granite and quartz worktops and a feature central Island unit, integrated appliances include wine fridge, dishwasher, larder fridge and freezer and a Stoves range cooker. The separate lounge and family room provide ample space for relaxation and entertainment, and the study/office provides an additional room ideal for remote working, catering to all your family's needs. For added convenience, this property includes a utility room and a ground floor cloakroom.

On the first floor there are four double bedrooms all with fitted or built in storage solutions, the principal bedroom offers a modern fitted en-suite bathroom with large walk in shower and bath and there is also a large family bathroom which also boasts a bath and separate shower.

OUTSIDE

Externally the property has benefitted from hard and soft landscaping and enjoys a corner plot with the garden wrapping around the property, with a sheltered Indian Sandstone patio to the rear, with steps up to a terrace area which is ideal for BBQ and alfresco dining. There is a raised secluded low maintenance sitting area, with Laurel and Red Robin shrub screening, with access down the flank of the property to the front, which has an expanse of lawn expanse and is well screened by laurel hedging. Adjacent to the property there is a detached double garage with remote controlled door for convenience and a double width driveway provides additional parking for multiple vehicles.

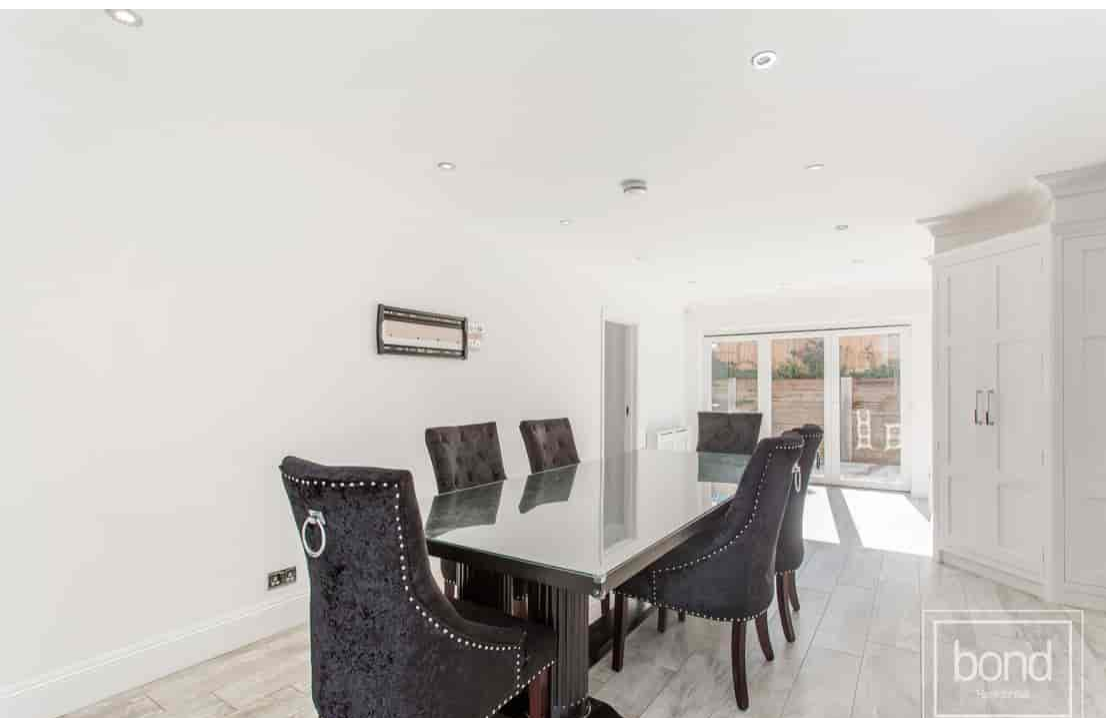
LOCATION

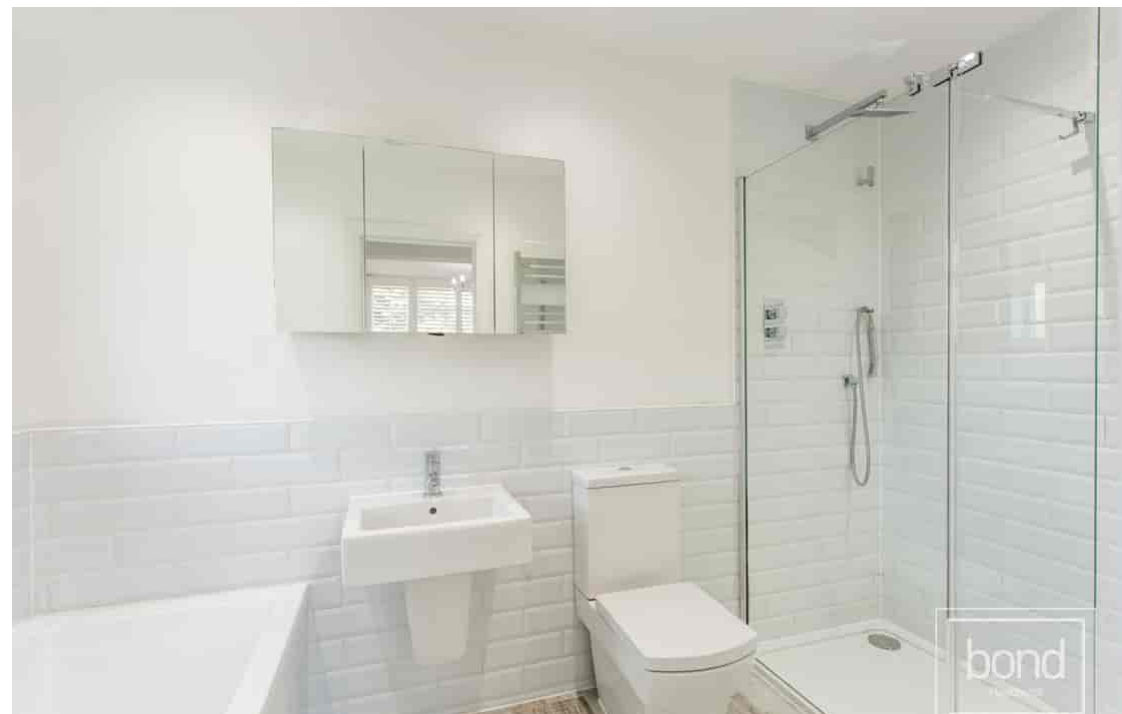
The property is conveniently situated on the periphery of Danbury village and therefore provides easy access to local shops, schools and pubs. Danbury offers a range of local facilities which include local Co-op supermarket and Tesco convenience store, public houses and a parish church. Schooling includes Elm Green and Heathcote as well as Danbury Park which is close by and St Johns primary schools. For the commuter, Chelmsford and Hatfield Peverel mainline stations lie approximately 5 miles from the village.

Chelmsford city centre offers an extensive range of shopping and leisure activities whilst Maldon town centre and South Woodham Ferrers are also within easy reach of the village. There is easy access to the A12 trunk road which links to the M25 and beyond as well as the park an ride service to Chelmsford City centre from the property.

Council Tax Band F

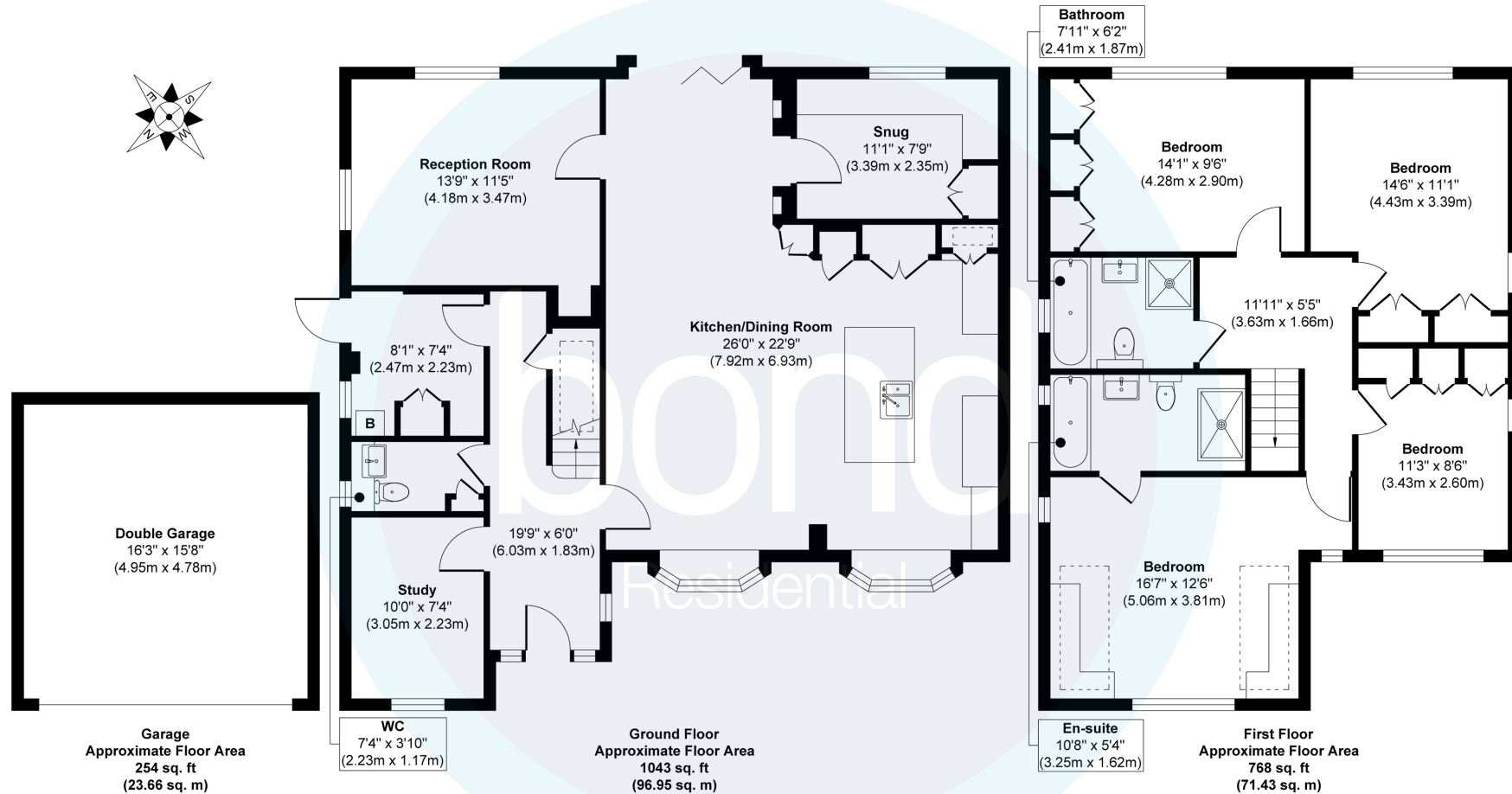
- Superbly presented detached family home
- Three separate reception rooms
- Two bathrooms and ground floor cloakroom
- Double garage and driveway
- Available Immediately
- Four double bedrooms with fitted or built in storage
- Stunning open plan kitchen/diner with modern bespoke units and integrated appliances
- Gas central heating and double glazing
- Walking distance of Danbury Park school
- Deposit £3170











Approx. Gross Internal Floor Area
 Main House = 1811 sq. ft / 168.38 sq. m
 Garage = 254 sq. ft / 23.66 sq. m
 Total = 2065 sq. ft / 192.04 sq. m

Illustration for identification purposes only, measurements are approximate, not to scale.
 Produced by Elements Property

10, Maldon Road,
 Danbury, Essex, CM3 4QQ
 Telephone: 01245 222856
 Website: www.bondresidential.co.uk

Consumer Protection from Unfair Trading Regulations 2008 and the Business Protection from Misleading Marketing Regulations 2008. Bond Residential have made every effort to ensure that consumers and/or businesses are treated fairly and provided with accurate material information as required by law. We have not tested any apparatus, equipment, fixture, fitting or any services and as such are unable to verify they are in working order, fit for their purpose, or within the ownership of the seller or landlord. Neither have we been able to check the legal documentation to verify the legal status of the property. We therefore advise potential buyers or tenants to verify these matters with their own solicitors or other advisers.

