



'MASSEYS' OAK LODGE DRIVE, SALFORDS, RH1

HOUND & PORTER

FIND A HOUSE. MAKE IT HOME

'MASSEYS' OAK LODGE DRIVE, SALFORDS, RH1



- Over 3,200 sq ft detached home
- Tremendous Cul-de-sac position
- Good sized corner plot with gated drive
- Incredibly popular road
- Walking distance to train line into London
- Ample driveway for numerous cars

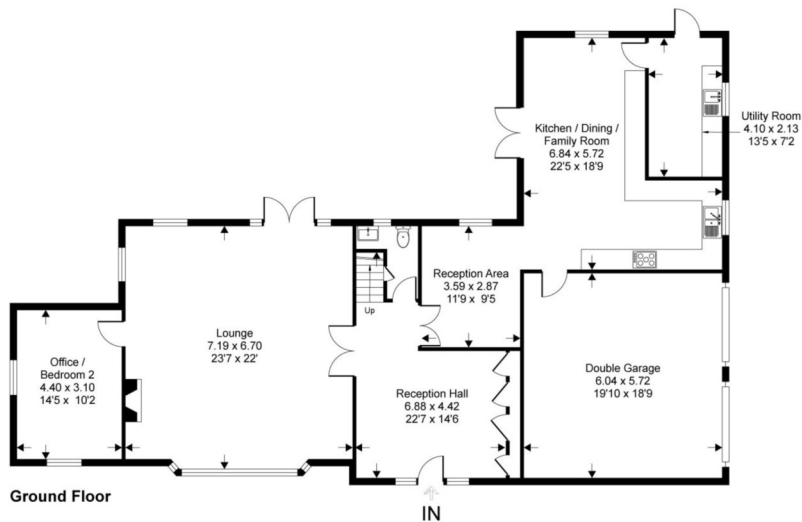
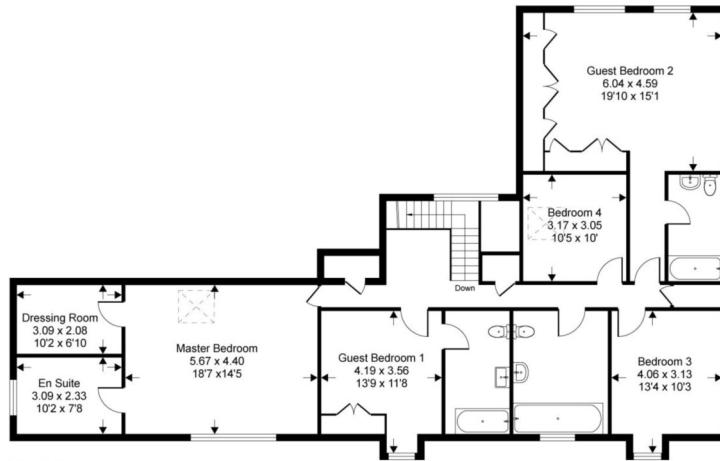
# 'MASSEYS' OAK LODGE DRIVE, SALFORDS, RH1

## Oak Lodge Drive, RH1

Approximate Gross Internal Area = 268 sq m / 2880 sq ft

Approximate Garage Internal Area = 35 sq m / 380 sq ft

Approximate Total Internal Area = 303 sq m / 3260 sq ft



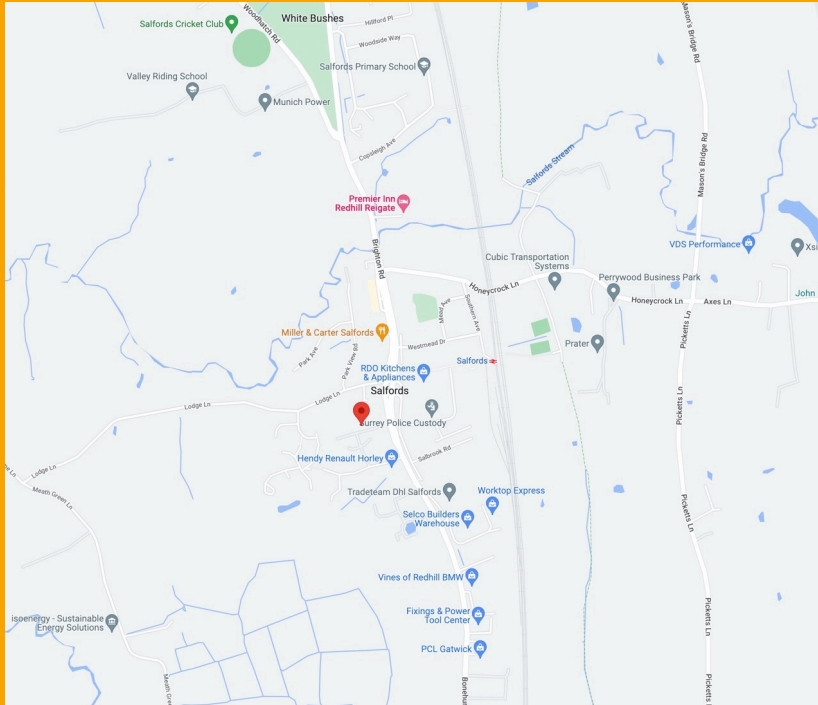
Welcome to 'Masseys' nestling quietly at the end of a popular private road in Salfords. As you approach via a gated, sweeping driveway, you'll find providing ample space for multiple cars. Additionally, the large integral double garage offers further parking and storage options. The reception sets a welcoming tone. This versatile space is perfect area to greet guests. The lounge features doors that open onto the patio and gardens. In winter, the log burner adds a warm, homely ambiance. An adjoining room offers flexibility as an office, snug, or additional bedroom. The heart of the home is the open-plan kitchen, dining, and family area, ideal for hosting.

An adjacent relaxation area can serve as a TV room, and doors open onto another patio. WC and utility room complete the downstairs area. Upstairs, the master featuring a dressing room and en suite bathroom with both a bath and shower. Two additional bedrooms also have en suite bathrooms, with one offering excellent built-in wardrobe space and a walk-in wardrobe area. There are a further two bedrooms, this completes the top floor. The garden wraps around the property, providing an ideal setting for entertaining and family activities. Multiple patio areas and lawns offer the perfect spots to enjoy the sunshine with a cold drink and watch the sunset.

This floor plan is for representation purposes only as defined by the RICS code of Measuring Practice (and IPMS where requested) and should be used as such by any prospective purchaser. Whilst every attempt has been made to ensure the accuracy contained here, the measurement of doors, windows and rooms is approximate and no responsibility is taken for any error, omission or mis-statement. Specifically no guarantee is given on the total area of the property if quoted on the plan. Any figure provided is for guidance only and should not be used for valuation purposes.

Copyright Within Walls. 2024 - Produced for Hound and Porter

## 'MASSEYS' OAK LODGE DRIVE, SALFORDS,



### LOCATION

This fabulous home is located just outside Redhill, Reigate and Horley town centres in the very popular Salfords village. Redhill town centre is less than 5 miles away so a short drive will get you there in under ten minutes. The market town of Reigate is brimming with boutique shops, cafes and restaurants, Priory Park offers lovely dog walks and a central children's play area is accompanied by a central cafe. Salfords main line station is under a mile away and offers great links to London and the South Coast. So, if you are looking for a large family home, beautifully presented, situated in a fabulous private spot, this is the property for you.

### ADDITIONAL INFORMATION

Within easy reach of the A25, M23, M25 and Gatwick Airport A bus service providing access to Redhill, Reigate and north of the M25 DISTANCE TO STATIONS FROM PROPERTY BY ROAD • 0.8 miles to Salfords Station • 2.9 miles to Horley Station • 4.5 miles to Redhill Station. Council tax band G,



### DID YOU LIKE WHAT YOU'VE JUST SEEN?

Get in touch. We are more than happy to arrange a viewing, assist you with the complicated paperwork and find you the best local businesses to help during and after your move. We look forward to hearing from you.

58 Castle Walk  
Reigate, Surrey  
RH2 9PX

01737 317880  
hello@houndandporter.co.uk