

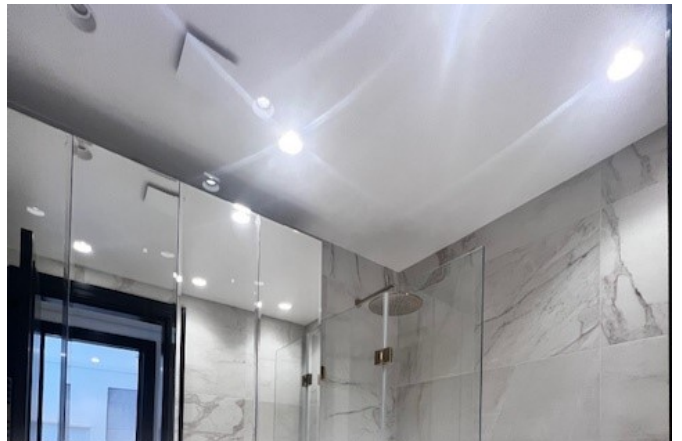
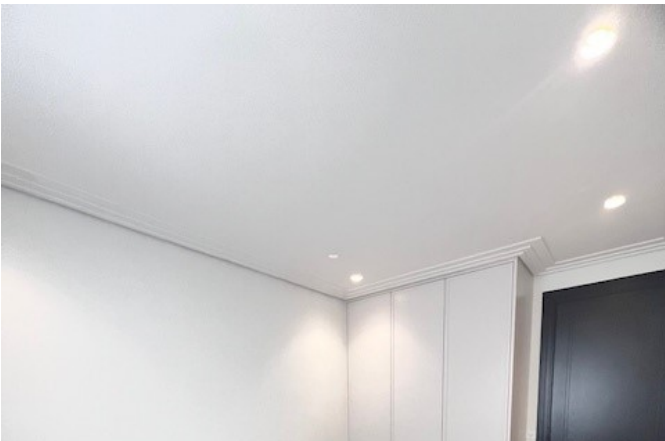
Hendon Lane, London, N3

£1,900 pcm

**\*A MUST SEE\*** A ground floor, 1 bed, 1 bath high specification apartment with private terrace in an exclusive luxury new development. Located just 0.4 miles to the local shops, amenities and transport links of Finchley Central, this property benefits from a fully fitted kitchens complete with Quartz worktops & splashback, integrated Siemens appliances, and Quooker boiling water tap, luxury contemporary bathroom, under floor heating throughout, fitted wardrobe, dressing room and allocated off street parking.

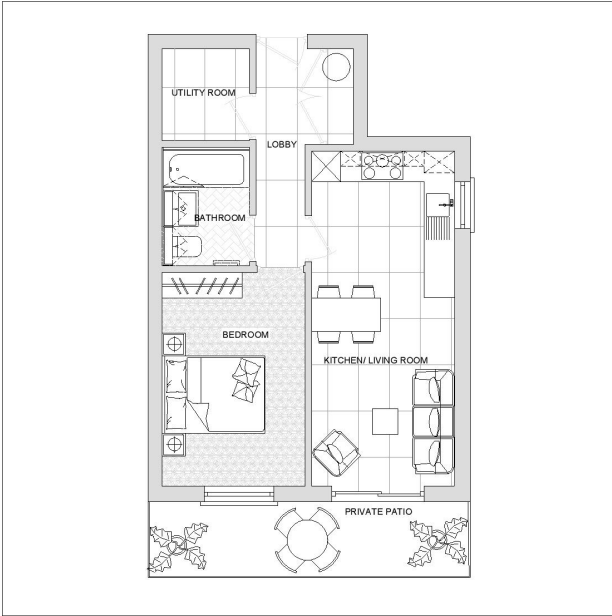


- 1 bedroom
- Fully integrated kitchen
- Dressing room
- Allocated parking
- 1 bathroom
- Siemens appliances
- Private Terrace
- Finchley Central shops, amenities and transport links just 0.4 miles

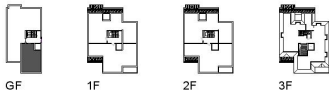





APARTMENT NO1  
GROUND FLOOR  
45sqm/ 485sqft  
One bedroom apartment



KITCHEN/ LIVING ROOM      2.7m x 6.5m/ 8'8" x 21'3"  
BEDROOM                      2.78m x 4.14m/ 9'1" x 13'5"  
BATHROOM                    1.7m x 2.3m/ 5'5" x 7'5"  
UTILITY ROOM                1.7m x 1.79m/ 5'5" x 5'8"



Energy Efficiency Rating		
	Current	Potential
Very energy efficient - lower running costs		
(92+) A		
(81-91) B	83	83
(69-80) C		
(55-68) D		
(39-54) E		
(21-38) F		
(1-20) G		
Not energy efficient - higher running costs		
England, Scotland & Wales		EU Directive 2002/91/EC 

When you are considering a property we recommend that you instruct a surveyor to ensure the property is in sound structural order and that equipment, fitting, services, etc are in working order and/or fit for their purpose and a solicitor to verify tenure and title of the property. We can give no assurances in this regard nor can we verify accuracy of measurements or distance.

**Jeremy Leaf & Co.,** for themselves and for their client, whose agent they are, give notice that:

1. Under the terms of the Anti Money Laundering Act 2007, intending purchasers will be asked to produce identification documentation at a later stage and we would ask for your co-operation in order that there will be no delay in agreeing the sale.
2. These particulars do not constitute any part of an offer or a contract.
3. All statements contained in these particulars are made without responsibility on the part of Jeremy Leaf & Co or their client.
4. None of the statements contained in these particulars is to be relied upon as a statement, warranty or representation of fact.
5. Please note we have not tested the services or any of the equipment or appliances in this property, accordingly we strongly advise prospective buyers to commission their own survey or service reports before finalising their offer to purchase.
6. Any intending purchaser or tenant must satisfy himself by inspection, or otherwise as to the correctness of each of the statements contained in these particulars.
7. No person in the employment of Jeremy Leaf & Co has any authority to make any representation or warranty whatsoever in relation to this property.
8. Unless otherwise stated, all prices and rents are quoted exclusive of Value Added Tax (VAT) . Any intending purchasers or lessees must satisfu themselves independently as to the incidents of VAT in respect of any transaction.
9. This document is not intended for distribution and may not be reproduced or further distributed or published for any purpose. In particular, any tenants detailed in this property should not be approached without prior written permission.