



17 Ballaradcliffe, Andreas, Isle of Man. IM7 3EN

Deceptively spacious semi-detached true bungalow with private rear garden and large garage, offered with no onward chain



£275,000 Freehold

PROPERTY DESCRIPTION

Manxmove are pleased to bring to market, 17 Ballaradcliffe, Andreas. A spacious semi-detached true bungalow situated within a quiet cul-de-sac, walking distance from the amenities of Andreas.

To the front of the property is a large driveway suitable for several vehicles and a nice sized front garden which is mainly laid to lawn and features two small apple trees. You enter the property via the large rear facing sun room which has recently had a new fibreglass flat roof fitted, a lovely room with open aspect into the private garden. Adjacent is the main lounge which is a comfortable size and also has views into the garden. The kitchen is fitted with a range of white wall mounted units, complimented by butchers block worktops and modern appliances. To the front of the property are two generous double bedrooms with ample space for wardrobes. Finally, a modern four piece bathroom completes the accommodation. The property is served by an efficient electric heating system, resulting in reduced heating and running costs.

Call Manxmove on 619966 to arrange your viewing today.

FEATURES

- Spacious Semi-Detached Bungalow
- Quiet Residential Cul-de-Sac
- Close to Andreas Stores and Grosvenor pub
- Lounge, Sun Room plus Kitchen
- 2 Double Bedrooms plus Modern Bathroom
- Large Garage & Driveway
- Private Rear Garden
- No Onward Chain



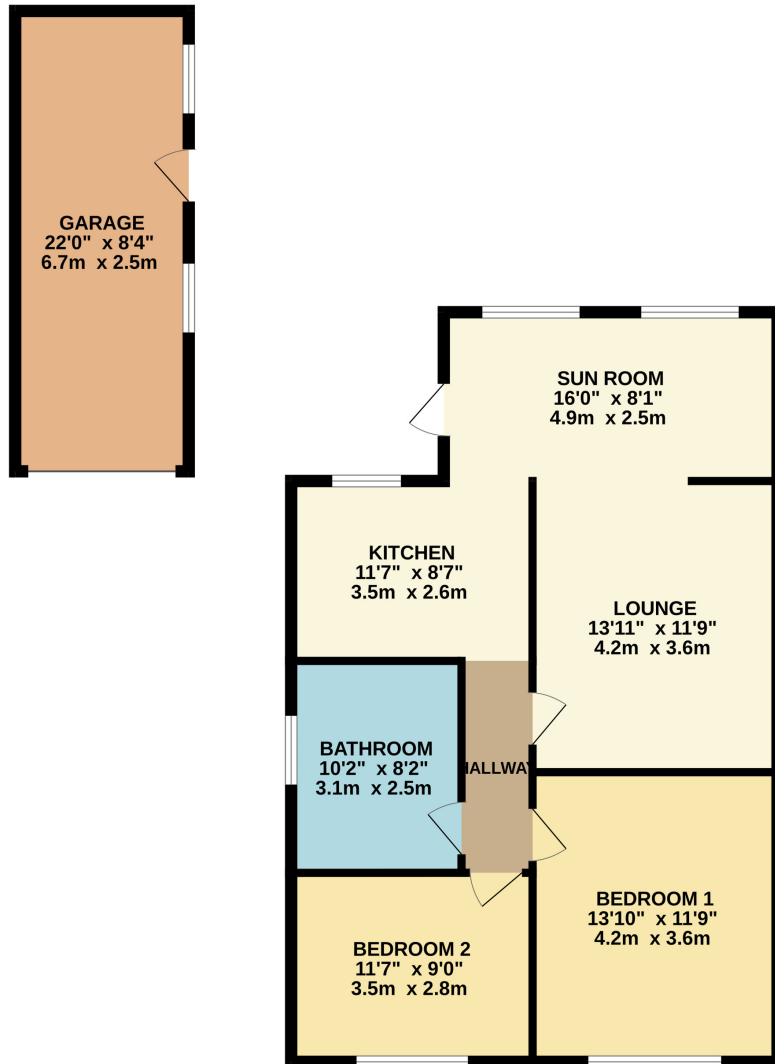
Property Images



FLOORPLAN



GROUND FLOOR
959 sq.ft. (89.1 sq.m.) approx.



TOTAL FLOOR AREA : 959 sq.ft. (89.1 sq.m.) approx.

Whilst every attempt has been made to ensure the accuracy of the floorplan contained here, measurements of doors, windows, rooms and any other items are approximate and no responsibility is taken for any error, omission or mis-statement. This plan is for illustrative purposes only and should be used as such by any prospective purchaser. The services, systems and appliances shown have not been tested and no guarantee as to their operability or efficiency can be given.
Made with Metropix ©2025

DISCLAIMER: Whilst Manxmove Ltd believe that these details are correct, neither Manxmove Ltd or their clients guarantee their accuracy in any way. Consequently, these details are not to be used to form part of any legally binding contract. Prospective purchasers or tenants are advised to visit this property to satisfy themselves as to the correctness of these details. Please note, we use wide angle camera lenses in order to show as much of each room as possible. This is not intended to mislead any prospective purchasers or tenants in any way and an honest verbal description is always available prior to viewing if required.