



Taylors Close, Meppershall, Shefford, Bedfordshire. SG17 5NH





## 4 Bedroom Detached House

### Guide Price £535,000 Freehold

Set in a lovely village spot in Meppershall down a delightful cul-de-sac is this spacious four bedroom detached property. Sitting on a corner plot, this home is the perfect opportunity for a family to move into this historic village. This property has been maintained beautifully and comes with a double garage. Book now to view!

- Four bedroom detached
- Corner plot
- Double width garage
- Cul-de-sac location
- Vendors have found somewhere!
- Open plan kitchen/dining area
- Private garden, not overlooked
- Close to highly rated schooling
- Popular village location
- EPC rating C. Council tax band E

**Ground Floor:****Entrance Hallway:**

Solid wood flooring with downstairs WC suite and sink wash basin. Access to main property.

**Kitchen:**

Abt. 12' 6" x 6' 9" (3.81m x 2.06m) Mixture of wall and base units finished with a granite worktop. Integrated appliances including 'Bosch' oven with hob and extractor fan. Sunken sink basin with fitted roller blinds to window.

**Dining Room:**

Abt. 10' 3" x 8' 0" (3.12m x 2.44m) Solid wooden flooring, UPVC double doors leading to patio area. Radiator, tv point. Access via stairs to first floor.

**Living Room:**

Abt. 16' 7" x 11' 7" (5.05m x 3.53m) Solid wooden flooring. Log burner with mantelpiece and stone border fireplace. Storage cupboard. Fitted made to measure roller blinds.

**Study:**

Abt. 8' 4" x 7' 0" (2.54m x 2.13m) Radiator, shelving, door to rear garden and fitted curtains.

**First Floor:****Master Bedroom:**

Abt. 12' 2" x 9' 5" (3.71m x 2.87m) Laid to carpet with fitted wardrobes with roller sliding mirrored doors. Radiator, fitted roller blinds.

**Bedroom Two:**

Abt. 8' 7" x 11' 5" (2.62m x 3.48m) Laid to carpet. Fitted wardrobes. Radiator. Fitted roller blinds.

**Bedroom Three:**

Abt. 12' 8" x 6' 9" (3.86m x 2.06m) Radiator. Fitted airing cupboard storage. Roller blinds to windows.

**Bedroom Four:**

Abt. 7' 9" x 8' 6" (2.36m x 2.59m) Radiator. Fitted cupboard storage and shelving unit.

**Family Bathroom:**

Three piece suite comprising of fitted bath tub, low level flush WC and sink wash basin. Tiled walls and floor.

**Outside:**

**Front Garden:**

Paved walkway to front door with stoned driveway and double width garage.

**Rear Garden:**

Mainly laid to lawn with a raised decking area and side access to garage and driveway.

**Additional Information:**

**Agents Note:**

Draft details yet to be approved by the vendor and may be subject to change.

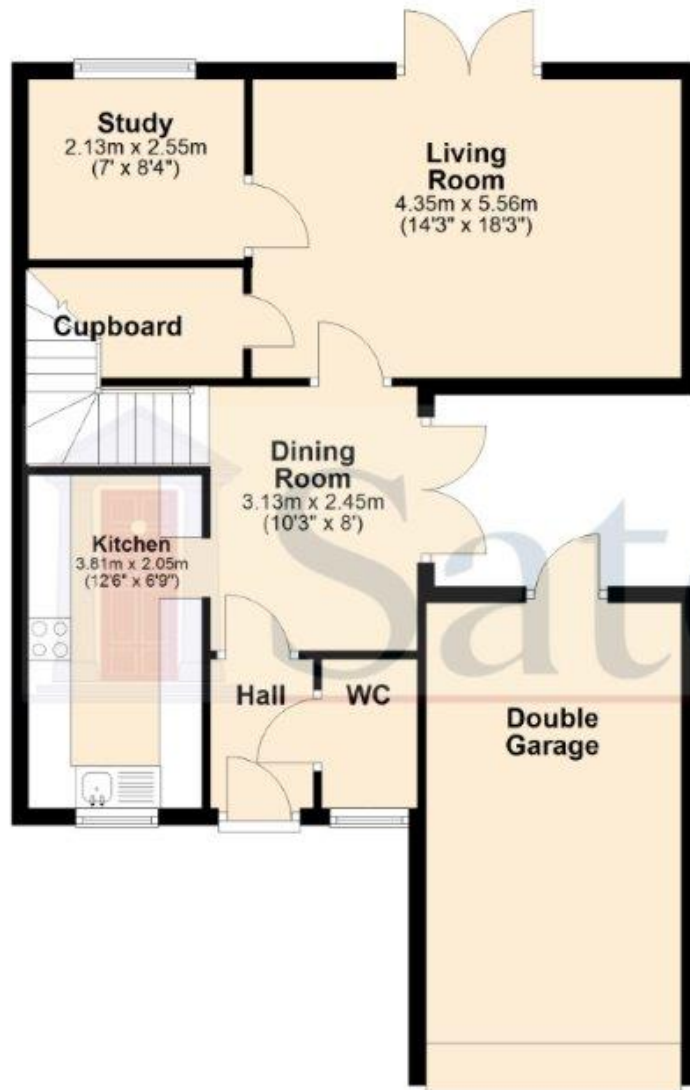




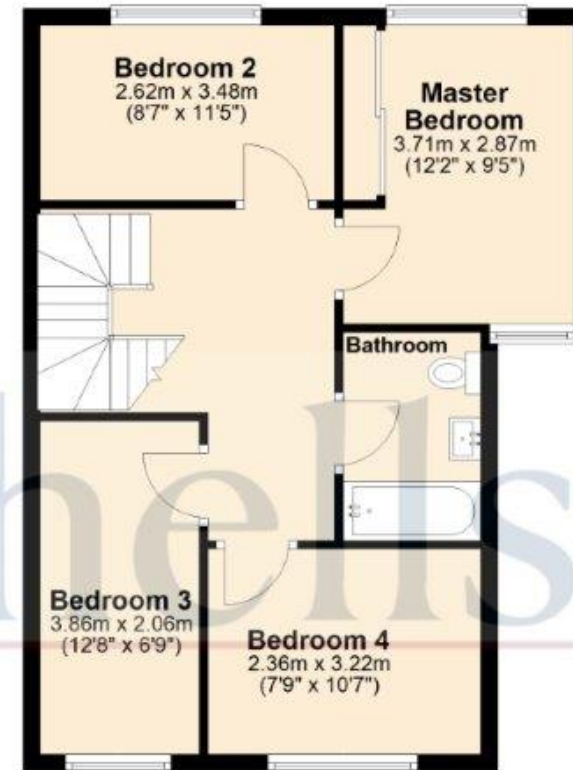
These particulars are a guide only and do not constitute an offer or a contract. The floor plan is for identification purposes only and not to scale. All measurements are approximate and should not be relied upon if ordering furniture, white goods and flooring etc. We have presented the property as we feel fairly describes it but before arranging a viewing or deciding to buy, should there be anything specific you would like to know about the property please enquire. Satchells have not tested any of the appliances or carried out any form of survey and advise you to carry out your own investigations on the state, condition, structure, services, title, tenure, and council tax band of the property. Some images may have been enhanced and the contents shown may not be included in the sale. Satchells routinely refer to 3rd party services for which we receive an income from their fee. If you would like us to refer you to one of these services please ask one of our staff who will pass your details on. We advise you check the availability of the property on the day of your viewing.



## Ground Floor



## First Floor



For illustrative purposes only - NOT TO SCALE - Measurements shown are approximate.  
The size and position of doors, windows, appliances and other features are approximate.

Plan produced using PlanUp.