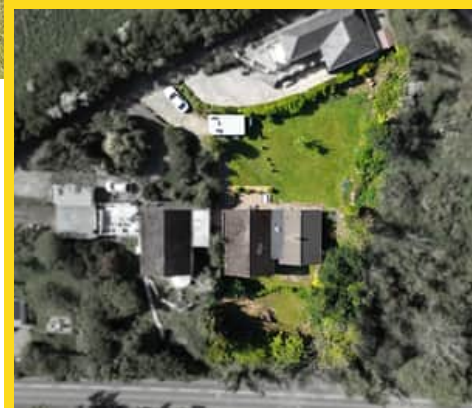




Kololo, Telephone Exchange Road, Laxey, Isle of Man. IM4 7HU

Impressive detached 4 bedroom true bungalow which is beautifully situated on the South side of Laxey Valley with views of Snaefell, The Laxey Wheel and Laxey Bay



£585,000 Freehold

PROPERTY DESCRIPTION

A Rare Opportunity in an Idyllic Setting

Nestled in a wonderfully private and tranquil position on Telephone Exchange Road on the outskirts of Laxey, Kololo is a large detached true bungalow offering panoramic rural views stretching across to Snaefell, the iconic Laxey Wheel, and Laxey Bay.

This impressive and spacious home features four generously sized bedrooms and a well-balanced layout that delivers excellent flow and flexibility for family living or entertaining. Set within a peaceful plot, the property provides a sense of seclusion while being just minutes from the shops, cafés, and amenities of Laxey village.

One of Kololo's standout features is its extensive basement areas — offering over 600 sqft of additional space which could be used for hobbies, storage, or potential development (subject to planning).

The property also includes off-road parking, a detached garage, and mature gardens that wrap around the home, providing multiple spots to relax and enjoy the views (especially from the top!)

FEATURES

- Superb Detached True Bungalow
- Quiet Residential Location in Laxey
- 360 Degree Rural Views
- Impressive Lounge/Diner plus Modern Kitchen
- 4 Double Bedrooms plus 2 Bathrooms
- Generous Plot with Lawned Gardens and Detached Garage
- Basement Areas in Excess of 600sqft



Property Images



FLOORPLAN



DISCLAIMER: Whilst Manxmove Ltd believe that these details are correct, neither Manxmove Ltd or their clients guarantee their accuracy in any way. Consequently, these details are not to be used to form part of any legally binding contract. Prospective purchasers or tenants are advised to visit this property to satisfy themselves as to the correctness of these details. Please note, we use wide angle camera lenses in order to show as much of each room as possible. This is not intended to mislead any prospective purchasers or tenants in any way and an honest verbal description is always available prior to viewing if required.

Manxmove Estate Agents - Douglas
Victoria Road, Douglas, IM2 4HD
01624 619966
info@manxmove.im