



Paynter Street,
Fenton



OneAgency

01782 970222

hello@oneagencygroup.co.uk



Offers in Region of £75,000

A two bedroom mid terraced house in the popular location of Fenton. The property benefits from two reception rooms, ground floor bathroom and two bedrooms. An ideal first time buy or investment opportunity. The property is in need of some improvement. Located close to amenities, commuter links and schools. Viewing is highly advised. No Chain!





Ground Floor

Reception Room One

4.39m x 3.54m (14' 5" x 11' 7") UPVC front door, double glazed window and carpet flooring.

Reception Room Two

3.73m x 3.54m (12' 3" x 11' 7") A double glazed window, radiator and carpet flooring.

Kitchen

4.11m x 1.62m (13' 6" x 5' 4") A range of base units with worktops, stainless steel sink basin, combi boiler to the wall, double glazed window, UPVC door, radiator and tiled flooring.

Bathroom

2.01m x 1.48m (6' 7" x 4' 10") A white suite with bath, pedestal hand wash basin, low level W/C, double glazed window, radiator and tiled flooring.

First Floor

Bedroom One

3.84m x 3.53m (12' 7" x 11' 7") A double glazed window, radiator and carpet flooring.

Bedroom Two

3.34m x 3.08m (10' 11" x 10' 1") A double glazed window, radiator and carpet flooring.

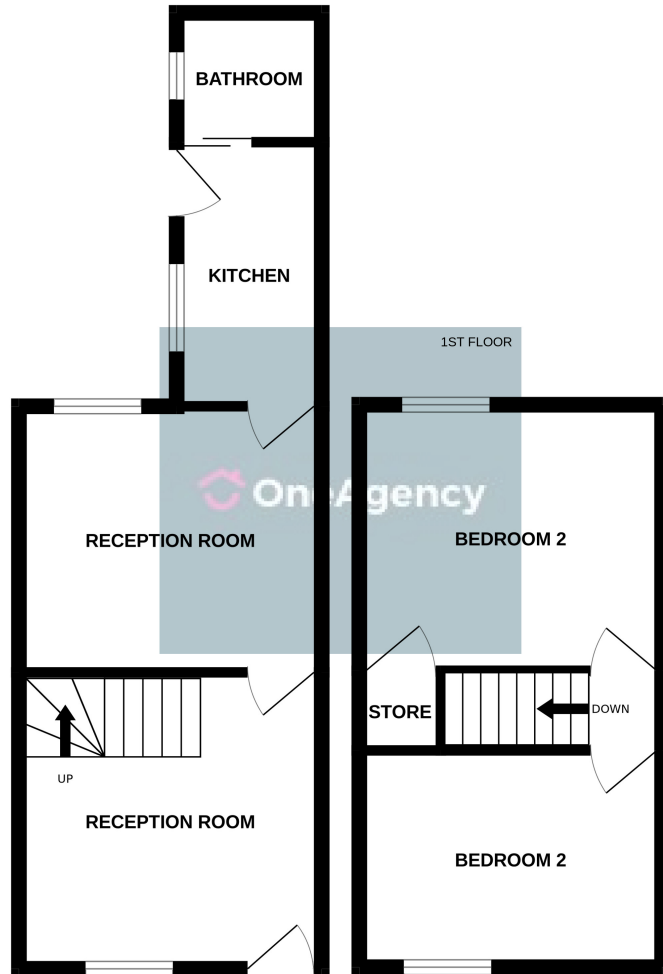
External

A paved yard to the rear with gated access.

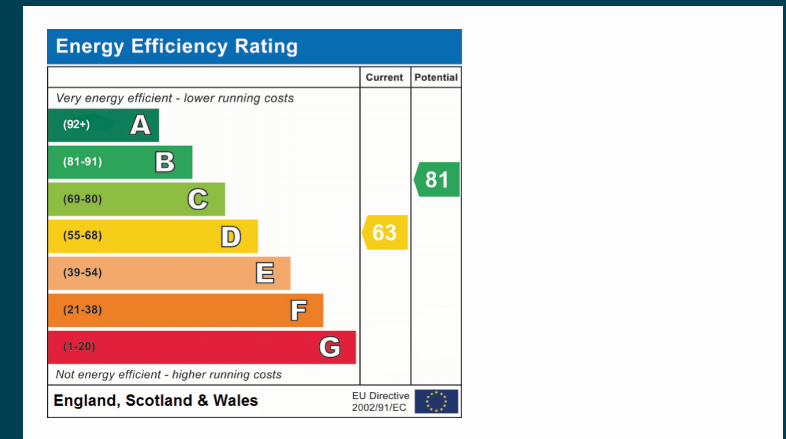
AGENTS NOTES

The council tax is band A. The local authority is Stoke-on-Trent.

GROUND FLOOR



Whilst every attempt has been made to ensure the accuracy of the floorplan contained here, measurements of doors, windows, rooms and any other items are approximate and no responsibility is taken for any error, omission or mis-statement. This plan is for illustrative purposes only and should be used as such by any prospective purchaser. The services, systems and appliances shown have not been tested and no guarantee as to their operability or efficiency can be given.
Made with Metropix ©2024



OneAgency, 9 & 10 Ridge House Drive, Festival Park, Stoke-on-Trent, ST1 5SJ

01782 970222

hello@oneagencygroup.co.uk

Every attempt has been made to ensure accuracy, however, all measurements are approximate and for illustrative purposes only. **Not to scale.**

In accordance with The Consumer Protection from Unfair Trading Regulations 2008 the following particulars have been prepared in good faith and they are not intended to constitute part of an offer or contract. We have not carried out a structural survey and the services, appliances and specific fittings have not been tested. All photographs, measurements, floor plans and distances referred to are given as a guide only and should not be relied upon for the purchase of carpets or any other fixtures and fittings. Lease details, service charges and ground rent (where applicable) are given as a guide only and should be checked and confirmed by your Solicitor prior to exchange of contracts.