

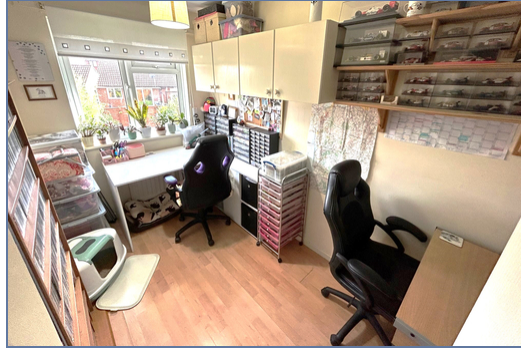


**36 Perracombe, Furzton, Milton Keynes,
Buckinghamshire, MK4 1EP**

£104,000 Share of Freehold

- Two double bedroom
- Driveway for one car
- Located in a quiet cul-de-sac
- 40% shared ownership
- £4,000 fixtures and fittings
- LOW RENT
- Large rear garden
- Rent & Service charge monthly £194.88
- EPC Rating





40% SHARED OWNERSHIP - NO UPPER CHAIN - TWO BEDROOMS - SEMI DETACHED - FRONT & REAR GARDEN - ONE ALLOCATED PARKING SPACE - POPULAR AREA OF FURZTON - CLOSE PROXIMITY TO SCHOOLS, LOCAL SHOPS & EASY ACCESS TO TRANSPORT LINKS - A MUST VIEW

we are delighted to offer for sale this well presented two bedroom semi detached property, situated within a cul-de-sac close proximity to Furzton lake. The accommodation briefly comprises; entrance, lounge, refitted kitchen/diner, first floor, two bedrooms and a family bathroom. Outside there is a generous size rear garden and a block paved driveway.

Rent & Service charge monthly £194.88

86 years left on lease

Disclaimer

Whilst we have endeavoured to prepare our sales particulars accurately none of the services, appliances or equipment have been tested. A buyer should satisfy themselves on such matters prior to purchase. Any measurements or distances mentioned in these particulars are for guide reference only. If such particulars are fundamental to a purchase, buyers should rely on their own enquiries. All enquiries should be directed to Elevation Estate Agents in the first instance.