

FOR SALE

Pumping Station Road,
Chiswick Riverside, W4

Town House
Chiswick Riverside

£1,199,500 fh

3  2  1 

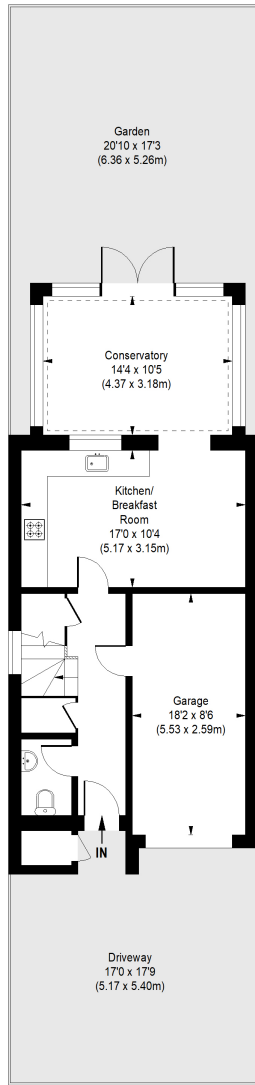


**horton
andgarton**

SALES / LETTINGS / PROPERTY MANAGEMENT

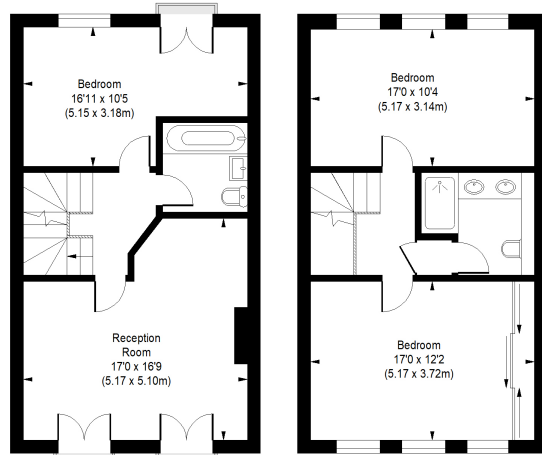
hortonandgarton.co.uk | Sales 020 3989 6464 | Lettings 020 3989 5454
161 Chiswick High Road, London, W4 2DT





GROUND FLOOR

**horton
andgarton**



FIRST FLOOR

SECOND FLOOR



**PUMPING STATION ROAD,
CHISWICK W4**

APPROXIMATE GROSS INTERNAL AREA

Total : 1695 Sq'/ 157.47 SqM

Not to scale, for guidance only and must not be relied upon as a statement of fact.
All measurements and areas are approximate only



Modern town house | Three bedrooms - Two bathrooms
| 1695 Sq' - 157.47 SqM | Garage and off street parking
| EPC rating D | Chiswick riverside



hortonandgarton.co.uk
Sales 020 3989 6464
Lettings 020 3989 5454

161 Chiswick High Road, London, W4 2DT