



**FOR SALE**



## Calder Gardens, Edgware, Greater London HA8

**FAMILY HOME & GREAT LOCATION!! IDEAL FOR FIRST TIME BUYERS AND BUY TO LET INVESTORS!**

Welcome to the market this BRIGHT semi detached home with a side garage. This property comprises of 2 receptions, 3 good sized bedrooms on first floor with a family bathroom, separate WC and off street parking for multiple cars. Potential to extend to side (double storey STPP) currently where the garage is.

Ideally located in an extremely sought after area of Edgware close to Canons High School, Krishna Avanti Primary School and Stag Lane Primary School.

This house is situated within a very short walk to Queensbury Station (Jubilee Line) and Queensbury Parade offering numerous bus routes and shops.

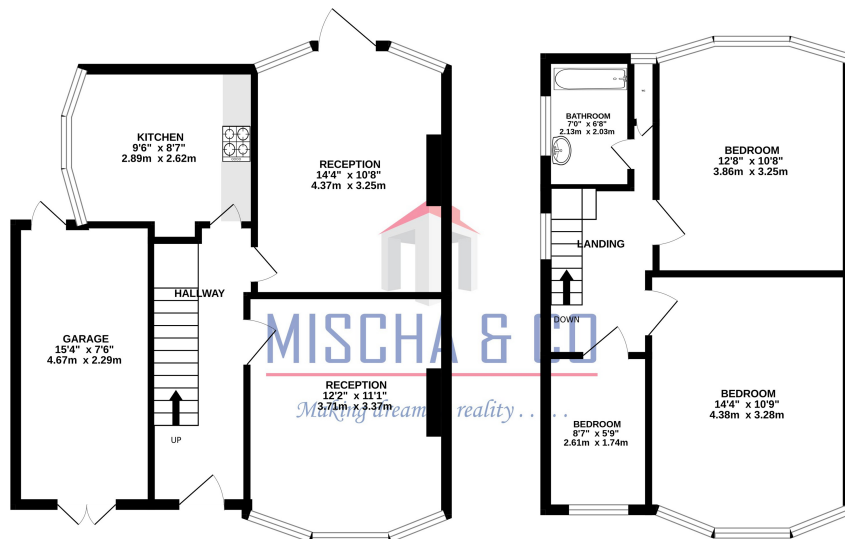
There really is not much to think about, needless to say, this will sell quickly!! Call Mischa & Co. NOW and arrange your tour!

## Offers in Excess of £600,000 Freehold

## Floorplan

GROUND FLOOR  
569 sq.ft. (52.9 sq.m.) approx.

1ST FLOOR  
436 sq.ft. (40.5 sq.m.) approx.



TOTAL FLOOR AREA: 1005 sq.ft. (93.4 sq.m.) approx.

Whilst every attempt has been made to ensure the accuracy of the floorplan contained here, measurements of doors, windows, rooms and any other items are approximate and no responsibility is taken for any error, omission or mis-statement. This plan is for illustrative purposes only and should be used as such by any prospective purchaser. The services, systems and appliances shown have not been tested and no guarantee as to their operability or efficiency can be given.  
Made with Metropix ©2025

NB: Please note that all fittings, kitchen appliances and heating systems have not been tested by Mishca & Co Sales & Lettings. Whilst we endeavour to make our sales details accurate and reliable. Room sizes should not be relied upon for carpets and furnishings. If there is any point, which is of particular important to you, please contact our office and we will be pleased to verify any information for you. Do so particularly if contemplating travelling some distance to view this property.