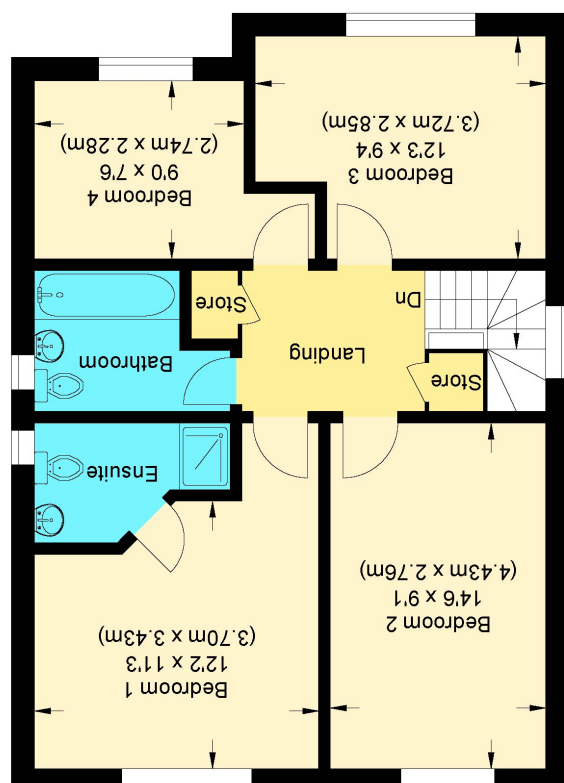


Approximate Gross Internal Floor Area : 122.0 sq m / 1313.19 sq ft  
Illustration for identification purposes only, measurements are approximate, not to scale.

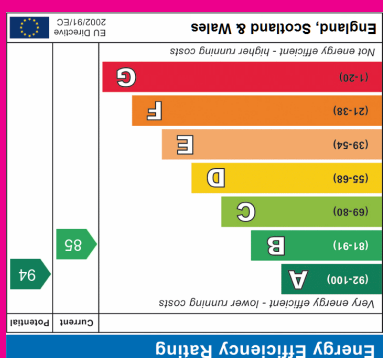
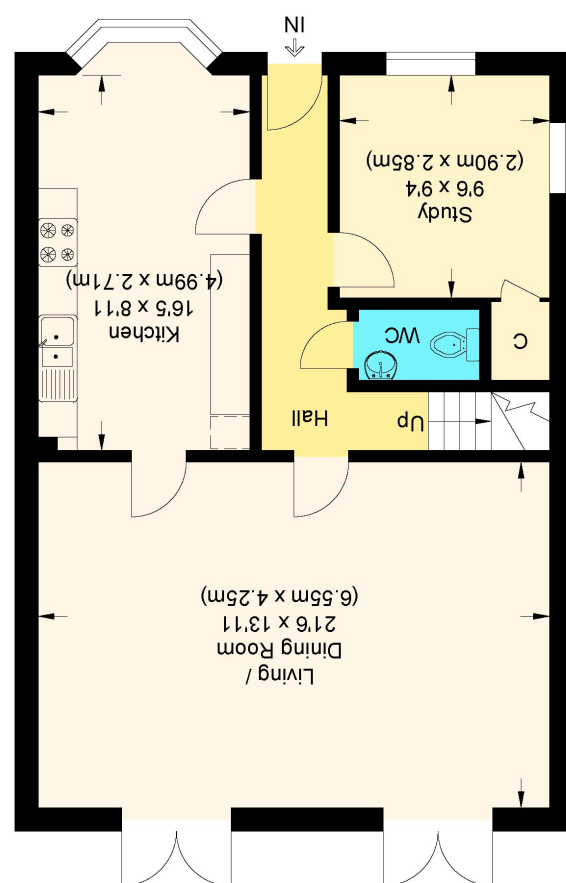
## The Davies



### First Floor



### Ground Floor





Description

This spacious family home is situated on a private estate within the sought after Fishers green area of Stevenage. Accommodation comprises of spacious entrance hall, doors to additional reception room/study. There is a spacious kitchen/diner, the kitchen benefits from built in appliances and has ample wall and base units. The dining area is open plan and enjoys views to the front. The lounge is also of a generous size and has two sets of patio doors leading out to the rear garden. There is a downstairs cloakroom.



Upstairs benefits from a spacious landing with doors to the bedrooms. The master benefits from en-suite shower room and W/C and built in wardrobes. In addition to this there is a main family bathroom. This has enclosed bath with incorporated shower, wash basin and W/C.



Outside to the there is a private driveway and attached garage. To the rear a fabulous landscaped garden situated on a substantial size plot. There is a beautiful patio area, well maintained lawn and well maintained flower borders.



Fishers Green is located within close proximity to the High Street and is also a short walk to the train station.

Council Tax band D

