



Dolby Rise | Chelmsford | £650,000



Dolby Rise

Chelmsford | Essex | CM2 6XQ

The Property Specialists are delighted to offer for sale, this well presented four bedroom detached family home, situated within the popular Chelmer Village area in a quiet cul-de-sac road. This property benefits from a well-maintained frontage along with an integral single width garage, along with many other amazing features.

Upon entering the property, you are greeted by a light and bright entrance hall overlooked by the galleried landing, giving the house a spacious feel as soon as you walk through the door. Continuing through the property, you are met by a set of double doors leading through to the main living space, where you are instantly hit by natural light from the bay window facing the front of the property. This room provides for ample living accommodation and is complimented by a lovely feature fireplace, giving this room a real cosy feel. On the ground floor you also find a good size dining area with access to the rear garden via patio doors. The kitchen comprises of a range of low and eye level units with various integrated and free standing appliances. This room, along with the dining area, are brilliant spaces to entertain coupled with free flowing access to the garden. The downstairs accommodation is completed by a separate cloakroom with a round wash basin.

The first floor accommodation comprises of four fantastic size bedrooms, with the master having the added benefit of a fitted three piece en-suite shower room. In addition, there is a family bathroom comprising of a fitted three piece suite with a bath and overhead shower. There is also the added bonus of a good sized storage cupboard from the landing.

To the rear of the property there is a well maintained south facing sunny rear garden. This is mainly laid to lawn with a small patio area which is a real sun trap. There is also access to the garage through a rear door.

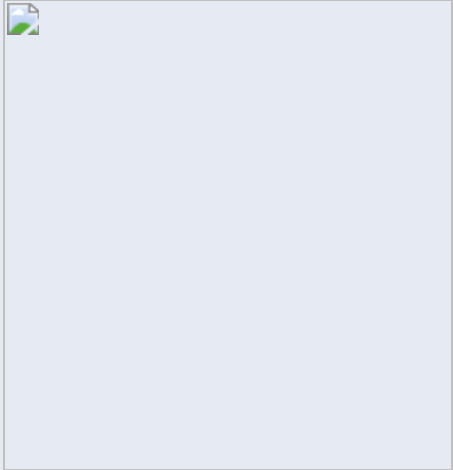
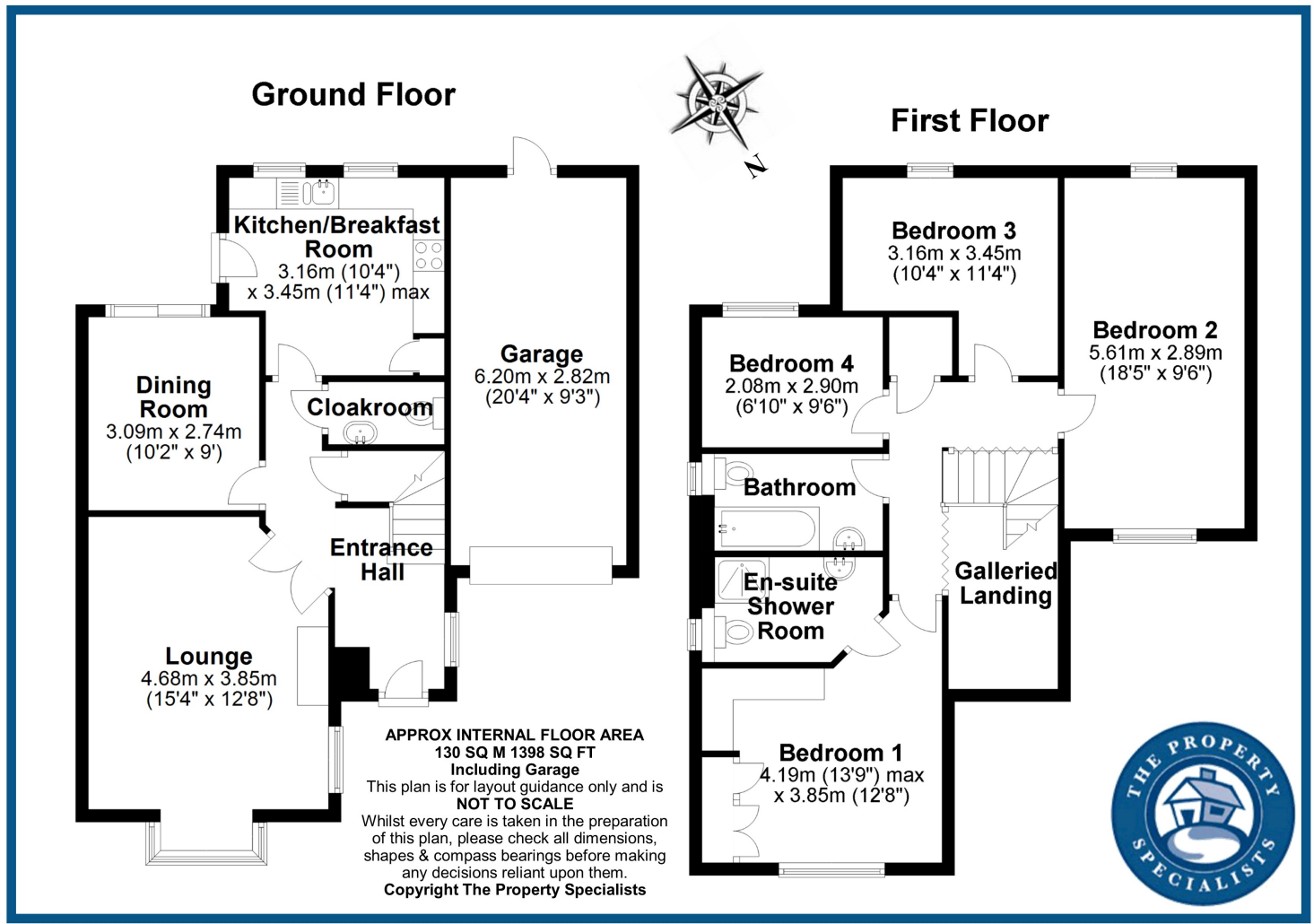
To fully appreciate the size and presentation of accommodation on offer, an internal viewing is strongly advised to see the space on offer, please call 01277 654446 to arrange now.





- Four Bedroom Detached Family Home
- Integral Garage
- South Facing Garden
- Beautiful Galleried Landing
- Large Master Bedroom With En-Suite
- Spacious Living Room With Feature Fire Place
- Popular Chelmer Village Location
- Quiet Cul-De-Sac Road
- Sepaerate Dining Room





Viewing strictly by appointment with The Property Specialists



Making Moving Home
Less Stressful

135 High Street, Billericay,
Essex, CM12 9AB
Tel: 01277 654446
sales@thepropertyspecialists.co.uk