



BarrettMove



**28 Marlow Bottom, Marlow, Buckinghamshire SL7 3LY**  
**Guide Price £1,295,000 - Freehold**



## PROPERTY SUMMARY

Barrett Move is delighted to offer for sale this beautifully renovated and spacious detached family home in the heart of Marlow Bottom.

## POINTS OF INTEREST

- \*\*\*No onward chain\*\*\*
- Unique four bedroom detached house
- Stunning split level layout
- Beautifully presented
- Landscaped garden with multiple entertaining areas
- Home office
- Driveway parking for 3/4 cars
- Close to village amenities and woodland walks
- High specification
- In catchment for Burford primary, Sir William Borlase and Great Marlow schools



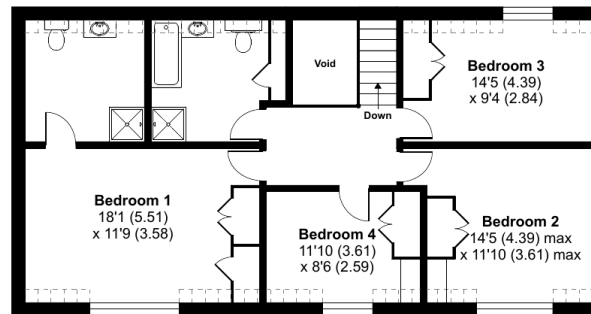
## Marlow Bottom, Marlow, SL7

Approximate Area = 2084 sq ft / 193.6 sq m (excludes void)  
 Limited Use Area(s) = 357 sq ft / 33.1 sq m  
 Total = 2441 sq ft / 226.7 sq m

For identification only - Not to scale

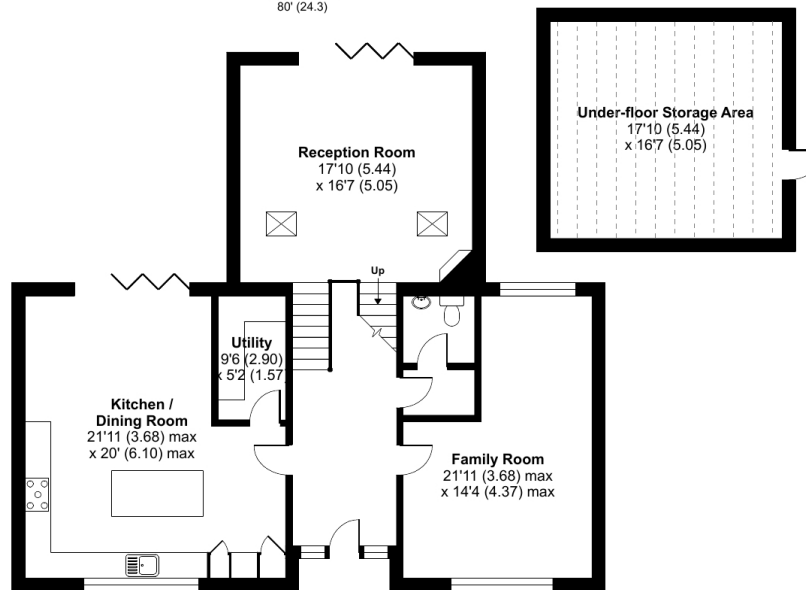


Denotes restricted  
head height



FIRST FLOOR

Garden  
Approximate  
80' (24.3)



GROUND FLOOR



Floor plan produced in accordance with RICS Property Measurement Standards incorporating International Property Measurement Standards (IPMS2 Residential). © nichecom 2022. Produced for Barrett Move. REF: 850630



Energy Efficiency Rating			
		Current	Potential
Very energy efficient - lower running costs			
(92-100)	<b>A</b>		
(81-91)	<b>B</b>		
(69-80)	<b>C</b>		
(55-68)	<b>D</b>		
(39-54)	<b>E</b>		
(21-38)	<b>F</b>		
(1-20)	<b>G</b>		
Not energy efficient - higher running costs			
		63	82
England, Scotland & Wales			
		EU Directive 2002/91/EC	