



Guide Price From £575,000
Crofton Avenue, Bexley, Kent, DA5 3AR

**Christopher
Russell**
PROPERTY SERVICES



AGENTS NOTES: No statement in these particulars is to be relied upon as representations of fact and purchasers should satisfy themselves by inspection, or otherwise, as to the accuracy of the statements contained herein. These details do not constitute any part of any offer or contract. Christopher Russell have not tested any equipment or heating system mentioned and purchasers are advised to satisfy themselves as to their working order. Great care is taken when measuring but measurements should not be relied upon for ordering carpets, equipment etc.

Christopher Russell LLP. Registered in Cardiff. Partnership No. OC329088

Christopher Russell Property Services

33 The Oval, Sidcup, Kent DA15 9ER • Tel: 020 8300 1234 Fax: 020 8300 6530 • sales@christopher-russell.co.uk

Guide Price £575,000 to £600,000

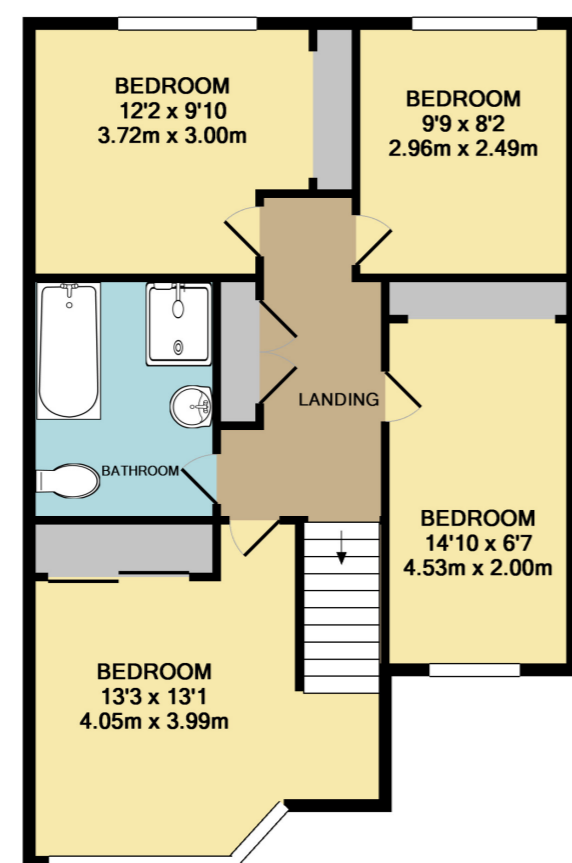
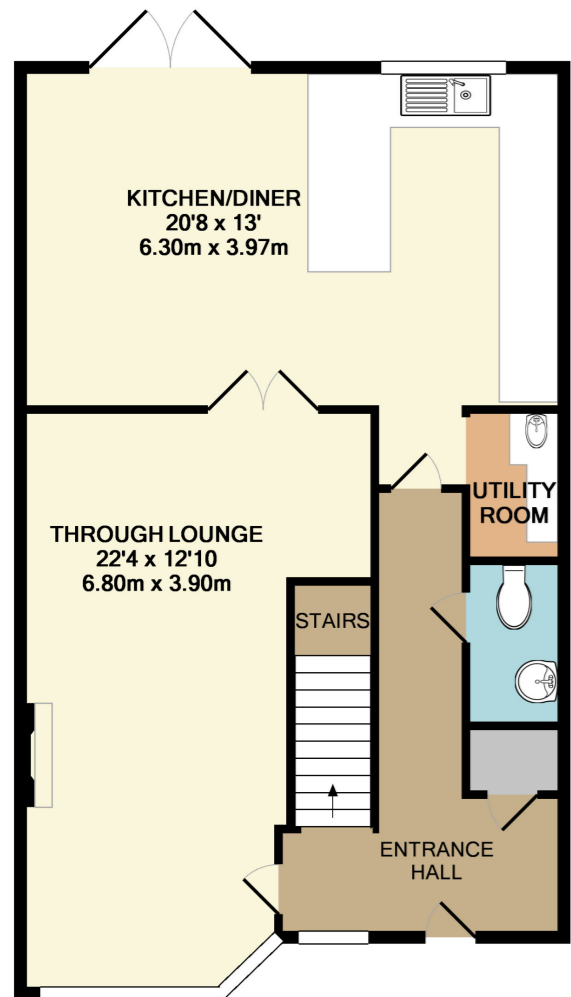
Extended four bedroom house that has been thoughtfully designed presented in excellent decorative condition situated in a popular location very convenient for Albany Park train station, Hurst Primary and Chislehurst and Sidcup Grammar Schools.

The property features a tiled roof when it was extended, gas central heating, double glazing. A modern fitted kitchen and bathroom and a garden room at the end of the garden that could be an office from home.

This very well presented home comprises; entrance hall, spacious through lounge, open planned kitchen/diner, utility room and cloakroom on the ground floor with four bedrooms and a spacious family bathroom on the first floor.

Outside there is off street parking potentially for three cars a rear garden that has been exceptionally well maintained extending approximately 100ft. The access to the garden room is at the end of the garden.

Council Tax Band D.



GROUND FLOOR
APPROX. FLOOR
AREA 707 SQ.FT.
(65.7 SQ.M.)

**Christopher
Russell**
PROPERTY SERVICES

1ST FLOOR
APPROX. FLOOR
AREA 601 SQ.FT.
(55.8 SQ.M.)

TOTAL APPROX. FLOOR AREA 1308 SQ.FT. (121.5 SQ.M.)

Whilst every attempt has been made to ensure the accuracy of the floor plan contained here, measurements of doors, windows, rooms and any other items are approximate and no responsibility is taken for any error, omission, or mis-statement. This plan is for illustrative purposes only and should be used as such by any prospective purchaser. The services, systems and appliances shown have not been tested and no guarantee as to their operability or efficiency can be given
Made with Metropix ©2018

