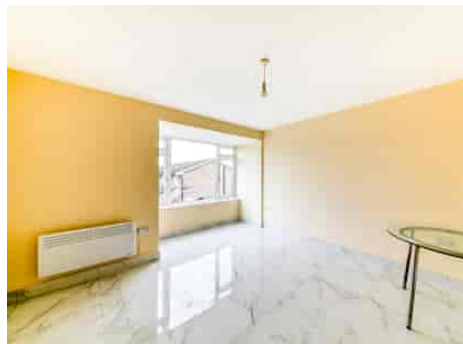


Truuli



Westminster Court, Osborne Gardens, Thornton Heath, Surrey, CR7 8PA

£260,000 Share of Freehold

- Chain free
- Garage & parking
- Recently decorated throughout
- Two double bedrooms
- Easy access into Crystal Palace Triangle
- Share of freehold

Southbridge Place, Surrey, CR0 4HA

Tel: 0330 043 0002

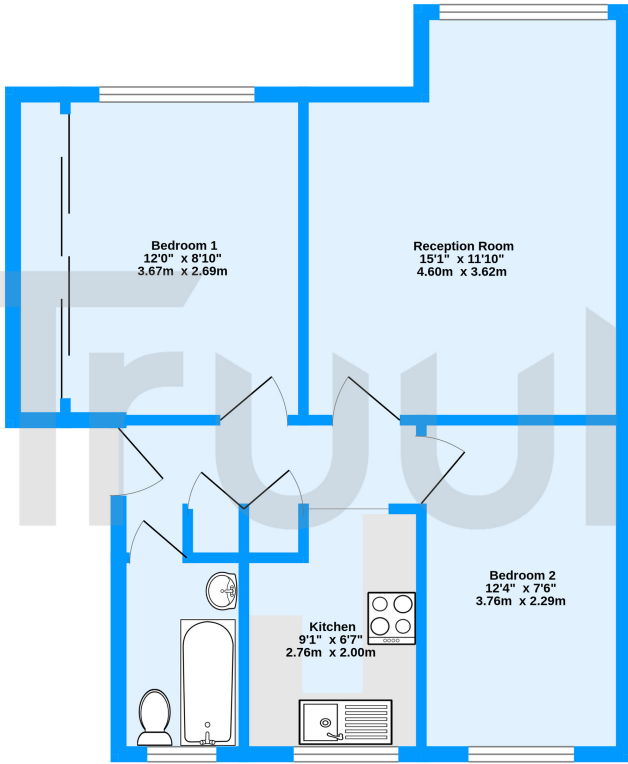
Email: save@truuli.co.uk Web: www.truuli.co.uk

Westminster Court, Osborne Gardens, Thornton Heath, Surrey, CR7 8PA

£260,000 Share of Freehold

Welcome to this beautifully modernised two-bedroom flat Westminster Court, Thornton Heath. Combining contemporary style with practicality, this stunning home offers the ideal living space in a highly convenient location.

First Floor
526 sq.ft. (48.9 sq.m.) approx.



Westminster Court, Osborne Gardens, CR7
TOTAL FLOOR AREA: 526 sq.ft. (48.9 sq.m.) approx.
Measurements are approximate. Not to scale. Illustrative purposes only
Made with Metropix ©2024

Energy Efficiency Rating		Current	Potential
Very energy efficient - lower running costs			
(92+)	A		
(81-91)	B		
(69-80)	C		
(55-68)	D		
(39-54)	E	56	
(21-38)	F		
(1-20)	G		
Not energy efficient - higher running costs			
England, Scotland & Wales		EU Directive 2002/91/EC	

