



91 High Street, Broom, Bedfordshire SG18 9NA
£675,000

COMPARABLE
INFORMATION

Shefford Branch 01462 811822
country-properties.co.uk

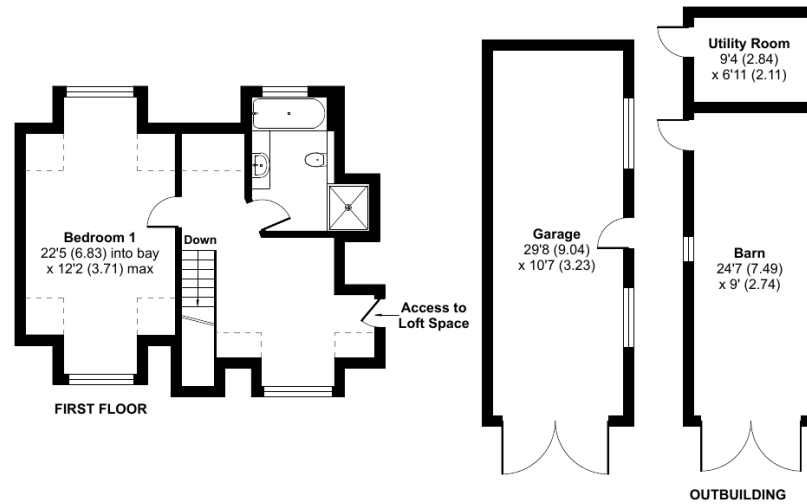
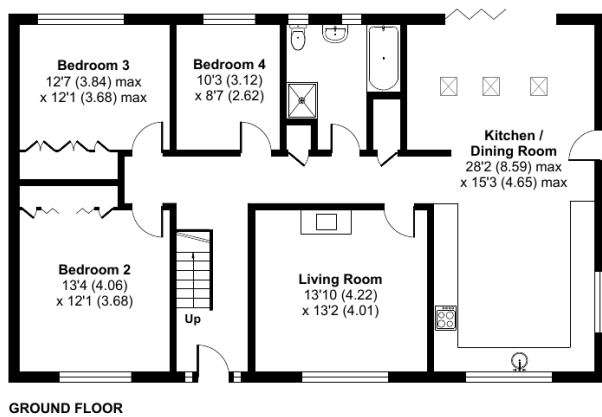
country
properties



Approximate Area = 1780 sq ft / 165.3 sq m
Limited Use Area(s) = 71 sq ft / 6.6 sq m
Garage = 314 sq ft / 29.1 sq m
Outbuilding = 294 sq ft / 27.3 sq m
Total = 2459 sq ft / 228.3 sq m

For identification only - Not to scale

Denotes restricted
head height



Floor plan produced in accordance with RICS Property Measurement Standards incorporating International Property Measurement Standards (IPMS2 Residential). © n1chem 2022. Produced for Country Properties. REF: 915223

