



11 The Bridge South Street, Farnham, Surrey. GU9 7RE.  
Guide Price £475,000

- Town Centre location
- Luxury Bath/Shower rooms
- Integrated appliances
- Allocated parking
- Share of Freehold
- 2 Double bedrooms
- Stunning kitchen
- Lift
- No pets or Commercial vehicles

Energy Efficiency Rating		Current	Potential
Very energy efficient - lower running costs			
(92+)	<b>A</b>		
(81-91)	<b>B</b>	79	79
(69-80)	<b>C</b>		
(55-68)	<b>D</b>		
(39-54)	<b>E</b>		
(21-38)	<b>F</b>		
(1-20)	<b>G</b>		
Not energy efficient - higher running costs			
England, Scotland & Wales		EU Directive 2002/91/EC	

## Description

Created by Hedgehunter, a local developer with an enviable track record of providing luxury homes for the most discerning of buyers, THE BRIDGE comprises 12 two bedroom apartments, most with southerly-facing balconies and riverside views, and 2 opulent, three bedroom penthouses with views towards Farnham's historic Norman castle and beautiful rooftop gardens. THE BRIDGE epitomises modern architectural elegance, contrasting the honeyed tones of Italian limestone with the metallic hue of deep bronze full-height windows.

\* Luxury 2 double bedroom 2nd floor apartment \* 2 bath/shower rooms \* kitchen with integrated Siemens appliances \* utility space \* high quality flooring and window coverings throughout \* allocated parking \* LIFT \* walking of town & station

## Directions

Sat Nav Ref - GU9 7RE (Parking space number 15)

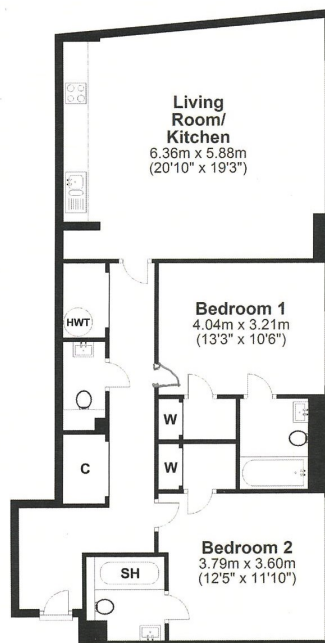
## Tenure

Leasehold with balance of a 999 years from and including 30 May 2018 but with benefit of a Share of the Freehold. There is a 6 monthly service charge of circa £1,071.88 which covers buildings insurance and upkeep of communal area. Diamond Managing Agents manage the building 01372 822935. We have not been able to check this information via an inspection of the lease and management agreement and prospective buyers should consult their own solicitors for verification.

## Local Authority

Waverley  
Band D

## Apartment 11, The Bridge



Total area: approx. 96.9 sq. metres (1042.9 sq. feet)

This plan is for layout guidance only.  
Measurements are for general guidance  
only and must not be relied upon

For clarification we wish to inform prospective purchasers that we have prepared these sales particulars as a general guide. We have not carried out a detailed survey or tested the services, appliances and specific fittings.