

# FOR SALE

---

Jameson Close,  
Acton, W3

---

End of Terrace House  
Acton

---

£1,100,000 fh

---

4  2  2 



**horton  
andgarton**

SALES / LETTINGS / PROPERTY MANAGEMENT

hortonandgarton.co.uk | Sales 020 3989 6464 | Lettings 020 3989 5454  
161 Chiswick High Road, London, W4 2DT



# FOR SALE

---

Jameson Close,  
Acton, W3

---

End of Terrace House  
Acton

---

£1,100,000 fh

---

4  2  2 



**horton  
andgarton**

SALES / LETTINGS / PROPERTY MANAGEMENT

hortonandgarton.co.uk | Sales 020 3989 6464 | Lettings 020 3989 5454  
161 Chiswick High Road, London, W4 2DT



# FOR SALE

Jameson Close,  
Acton, W3

End of Terrace House  
Acton

£1,100,000 fh

4  2  2 

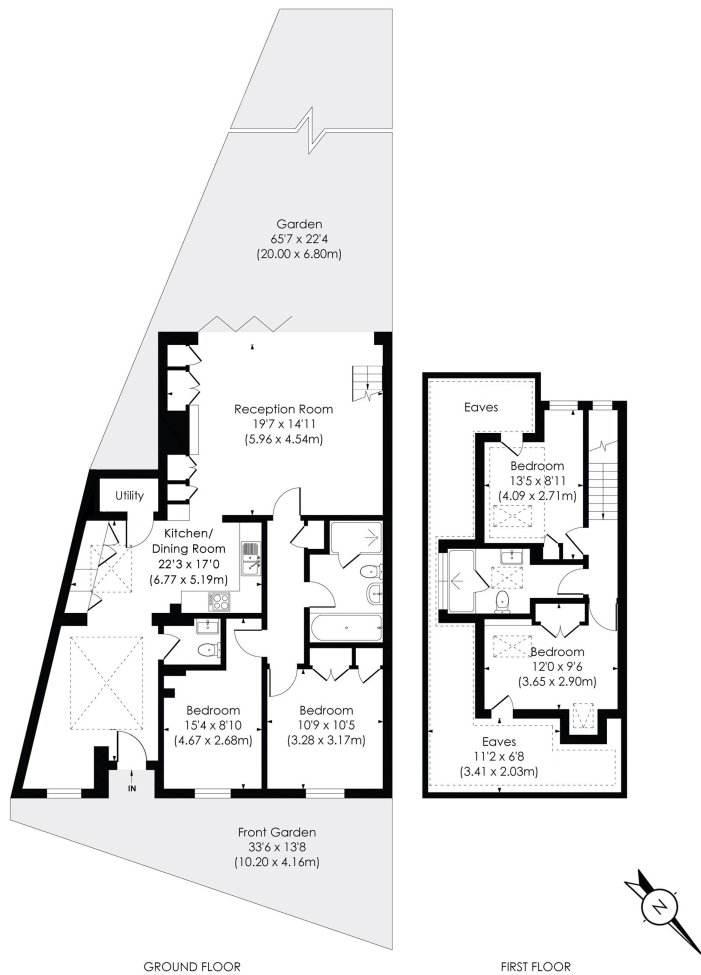


**horton  
andgarton**

SALES / LETTINGS / PROPERTY MANAGEMENT

hortonandgarton.co.uk | Sales 020 3989 6464 | Lettings 020 3989 5454  
161 Chiswick High Road, London, W4 2DT





### JAMESON CLOSE, W3

Approx. Gross Internal Floor Area  
**1568 Sq' / 145.63 SqM (Including RHH)**  
**1370 Sq' / 127.3 SqM (Excluding RHH)**

**horton  
andgarton**

© Pixangle Property Marketing Ltd. info@pixangle.com Tel: 0208 870 2118

This floor plan has been prepared for the purpose of illustration only in accordance with the latest RICS code of measuring practice and is not to scale. All measurements and areas are approximate and whilst every effort has been made to ensure the accuracy of the plan contained here, no responsibility is taken for any error, omission or misstatement.



Private gated development | Four bedrooms - Two  
 bathrooms | 1283 Sq' - 119.20 SqM | 65' South facing  
 garden | EPC rating C | Acton



hortonandgarton.co.uk  
 Sales 020 3989 6464  
 Lettings 020 3989 5454

161 Chiswick High Road, London, W4 2DT