



Goldhurst Terrace, South Hampstead, NW63HY

£800,000



Goldhurst Terrace, South Hampstead, NW6

A lateral two double bedroom apartment located on the fourth floor (with lift) of a well maintained mansion block offering 928 Sq Ft (86 Sq M) of internal space as well as access to delightful communal gardens.

This bright and well-proportioned flat benefits from high ceilings, a grand entrance hall, a spacious eat-in kitchen, two double bedrooms and a generous reception. Additional key features include access to well maintained communal gardens and a long lease.

Goldhurst Mansions is perfect positioned with Finchley Road underground station (Jubilee & Metropolitan Line) situated very close by along with local amenities such as Waitrose, restaurants and further transport link that Finchley Road has to offer.

*Please note that virtual furniture is included within the marketing photo

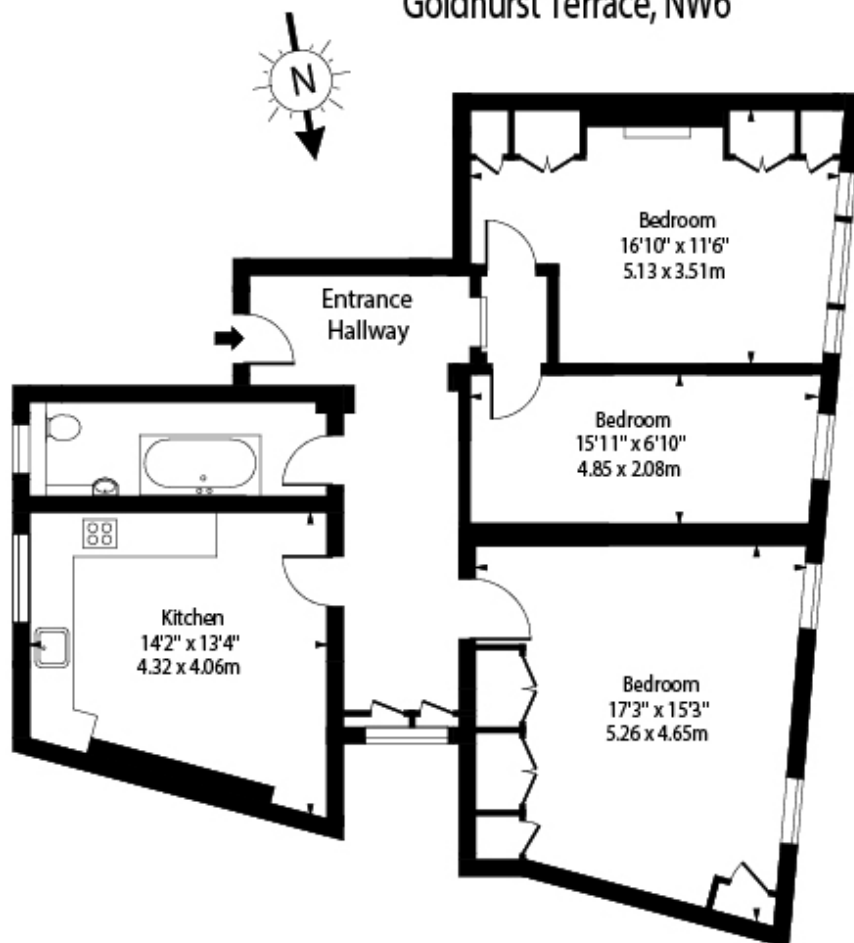
Features

- Impressive Apartment
- Fourth Floor (with lift)
- Two Double Bedrooms
- Generously Proportioned Throughout
- Communal Gardens
- Leasehold
- Eat-in Kitchen
- 928 Sq Ft (86 Sq M) Of Internal Space
- Spacious Reception Room
- Perfectly Positioned



Goldhurst Terrace,
South Hampstead,
NW6

Goldhurst Mansions,
Goldhurst Terrace, NW6



Fourth Floor

Approx Gross Internal Area 928 Sq Ft - 86.21 Sq M

For Illustration Purposes Only - Not To Scale Floor Plan by www.nogaphotostudio.com Ref: No. 42720

This floor plan should be used as a general outline for guidance only. Any intending purchaser or lessee should satisfy themselves by inspection, searches, enquiries and full survey as to the correctness of each statement. Any areas, measurements or distances quoted are approximate and should not be used to value a property or be the basis of any sale or let.