

maloco
mowat
parker

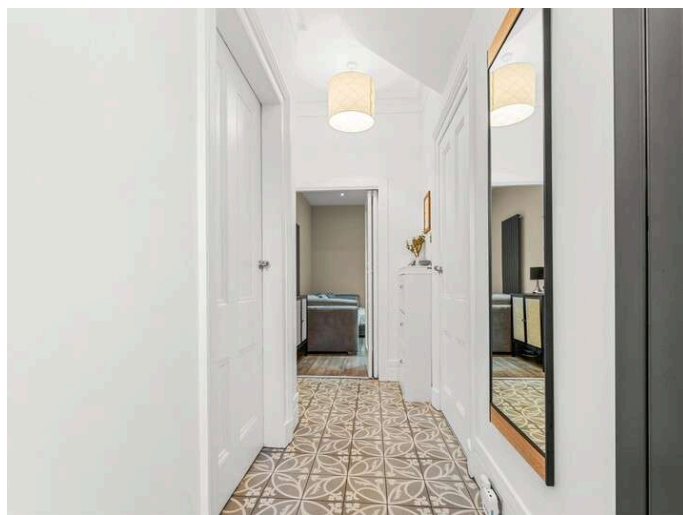
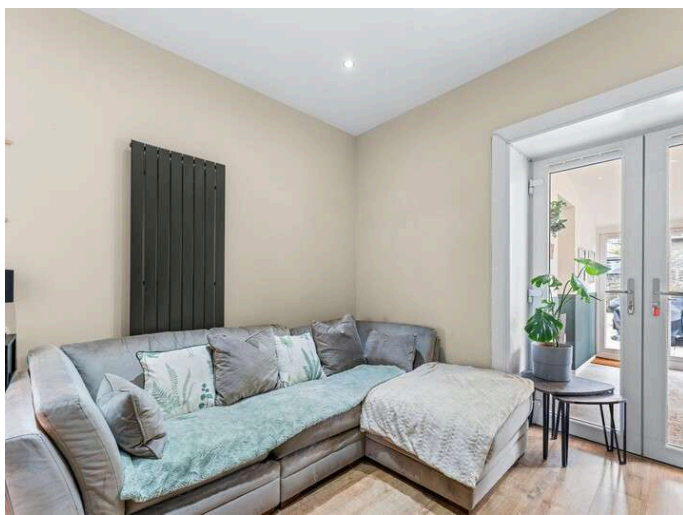
Solicitors & Estate Agents

16

Bannerman Street, Dunfermline, KY12 0LR



Working harder for you



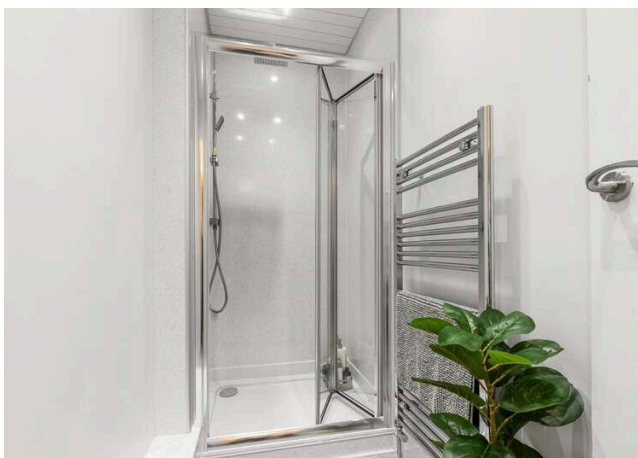
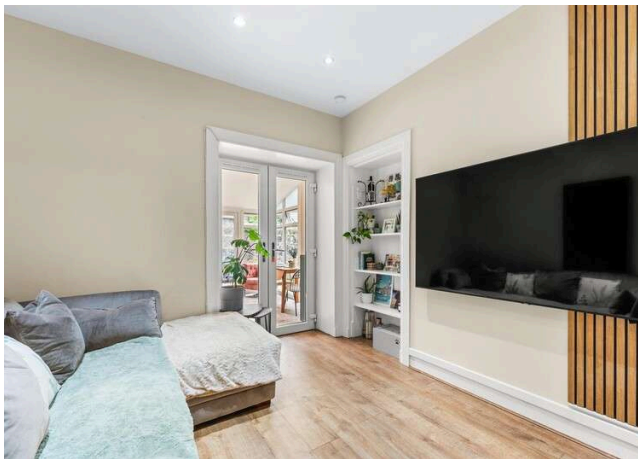
2 bedrooms



2 public



2 bathrooms



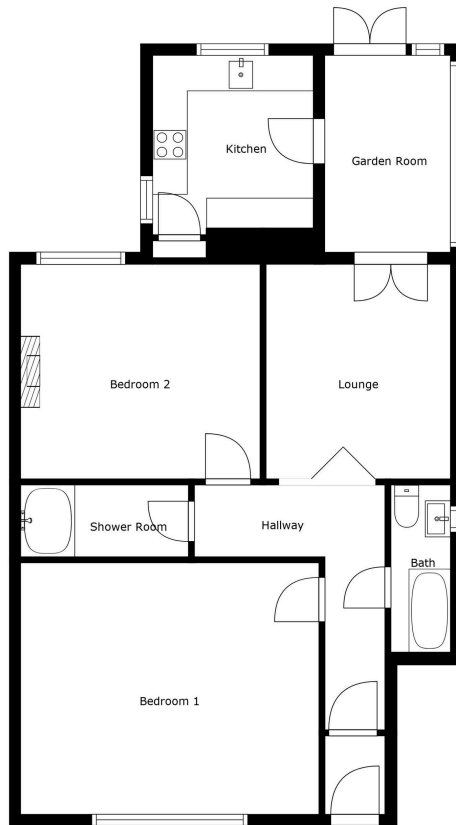
- + A traditional, two bedroom, flat within a fantastic location close to Dunfermline city centre and all its amenities
- + A perfect first time home, offered to the market in move in condition with spacious accommodation throughout and lovely gardens to the rear
- + Dunfermline offers a range of amenities including shops, supermarket, restaurants and bars that can all be reached on foot.
- + Fantastic transport links via nearby Dunfermline Train and Bus Stations with further links available at Halbeath and Inverkeithing Park and Ride, as well as the M90 motorway circa 2 miles from the property
- + Traditional features throughout including tiled entrance vestibule, ornate coricing and ceiling rose
- + Lounge to the rear of the home leading onto garden room, currently utilised as a dining room
- + Modern, kitchen with a range of storage options, appliances and worktop space
- + Double bedroom to the rear of the flat with wardrobes and traditional feature fireplace
- + Main, bay window bedroom to the front with gas fireplace











Floor Plan Created By Cubicasa App. Measurements Deemed Highly Reliable But Not Guaranteed.

Lounge	3.61 m x 3.10 m / 11'10" x 10'2"	Bathroom	2.79 m x 0.99 m / 9'2" x 3'3"
Garden Room	3.30 m x 2.11 m / 10'10" x 6'11"	Shower Room	2.79 m x 0.19 m / 9'2" x 0'7"
Kitchen	3.40 m x 2.69 m / 11'2" x 8'10"		
Bedroom 1	5.00 m x 4.19 m / 16'5" x 13'9"		
Bedroom 2	3.99 m x 3.51 m / 13'1" x 11'6"		



Sharing is caring!

6/8 Bonnar Street,
Dunfermline KY12 7JR

T: 01383 629720 F: 01383 621333, DX DF69

espc

W: maloco.co.uk