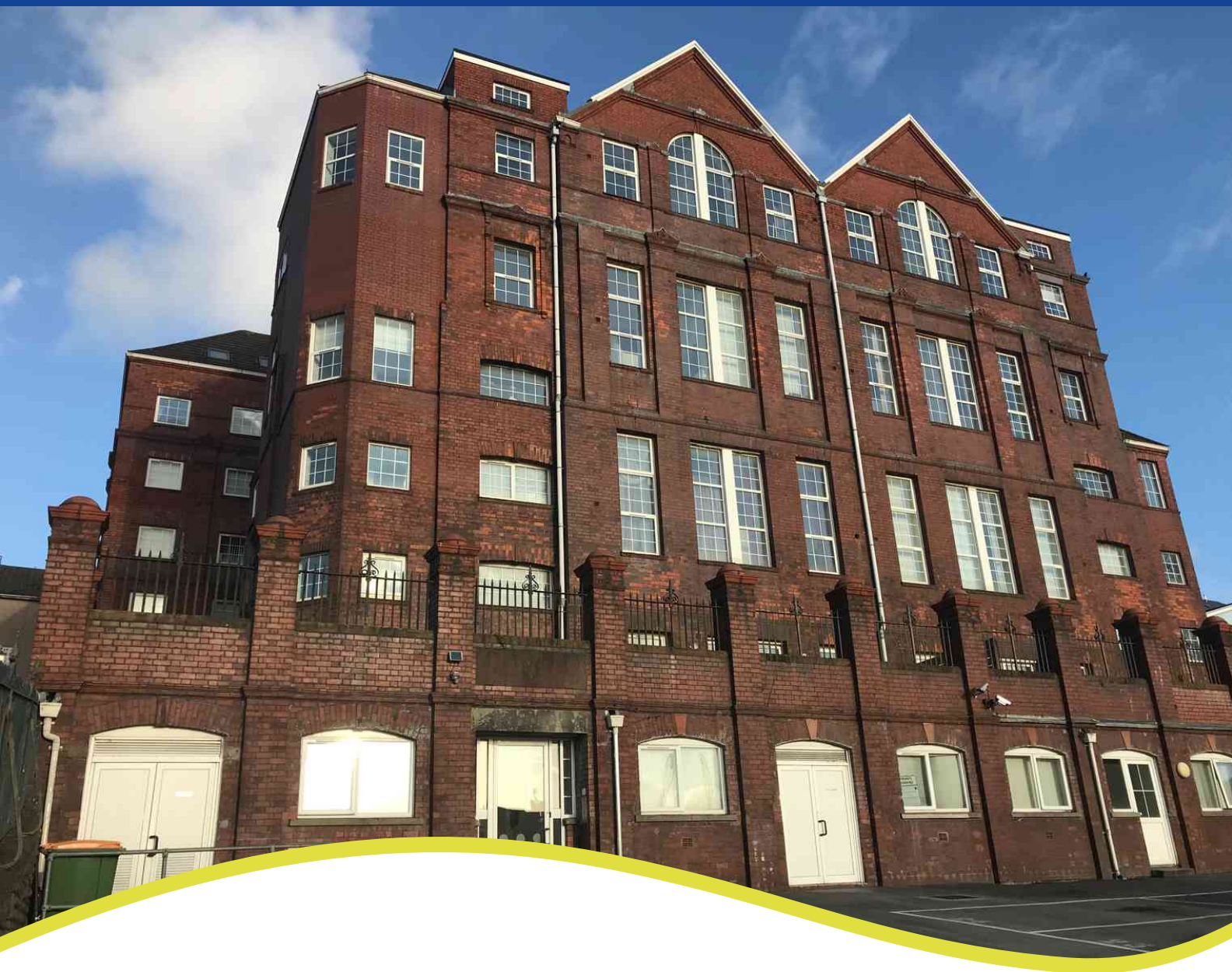


TO LET

£950 pcm



St Thomas Lofts, Kilvey Terrace, St Thomas, Swansea SA1 8BG

- Two Bedroom Apartment
- Second Floor with Lift Access
- Electric Heating
- Allocated Parking Space



Bay Estate Agents Ltd
29, Camona Drive, Maritime Quarter, Swansea, SA1 1YJ

01792 645566
mail@bayestateagents.com



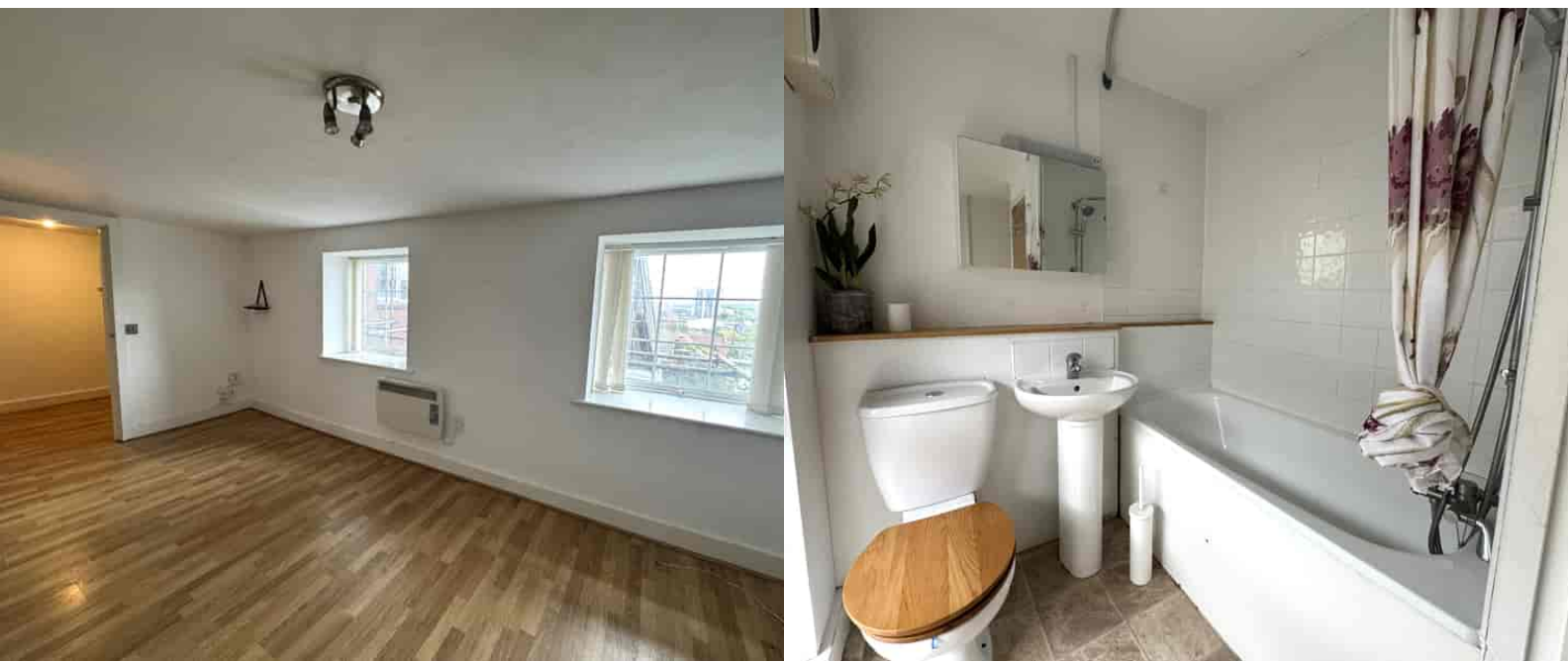
PROPERTY DESCRIPTION

Bay is delighted to offer for rental this stylish, two bedroom apartment. Set within the St. Thomas Lofts development, a converted school building converted in 2009.

Located on the second floor, the property briefly comprises a hallway leading to an open-plan living and dining area with adjoining kitchen, and a double -sized bedroom to the rear. Upstairs there is a mezzanine main bedroom, and bathroom. The apartment benefits from allocated parking (requiring parking permit) and electric heating.

Conveniently located for access to the City Centre and Swansea Bay University campus. On site concierge, lift access and video telephone entry system. Please refer to Ofcom checker for mobile signal and coverage. *Please note that there is scaffolding surrounding the building due to ongoing works which means that the private decked enclosure for the property is currently out of use with no access available.*

Security Deposit: £1,425 (£1,900 for student lets) Term: 6 Months (plus) Council Tax Band: B EPC Rating: C Requested Holding Deposit: £218



ROOM DESCRIPTIONS





Bay Estates & Lettings Agents

29, Camona Drive, Maritime Quarter, Swansea, SA1 1YJ
01792 645566
mail@bayestateagents.com