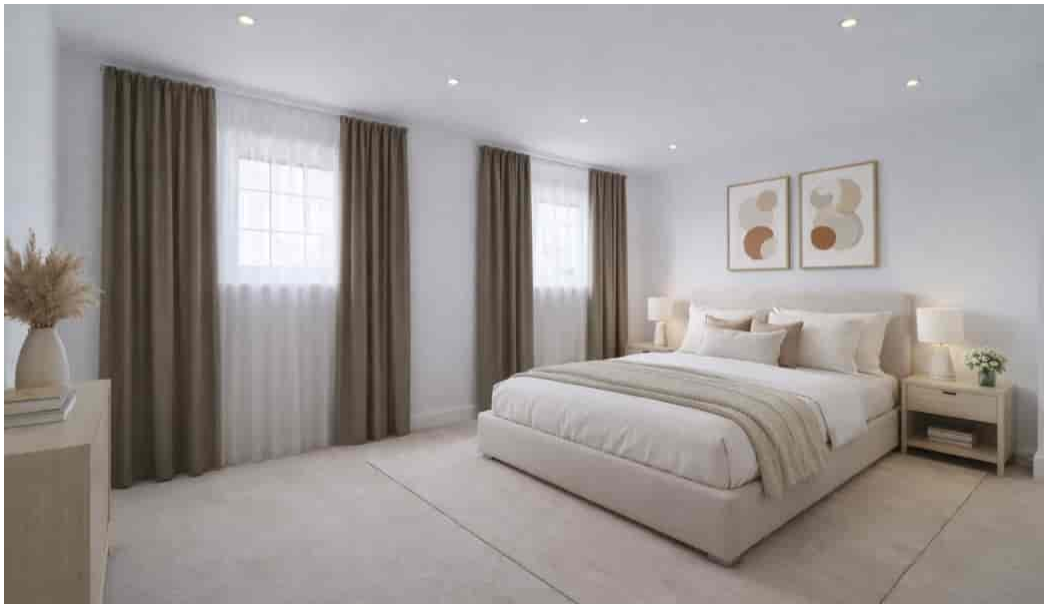




THE ESTATE AGENTS
1977



8 Tattersall Close, Northampton NN3 6DZ
Guide Price £350,000 - Freehold

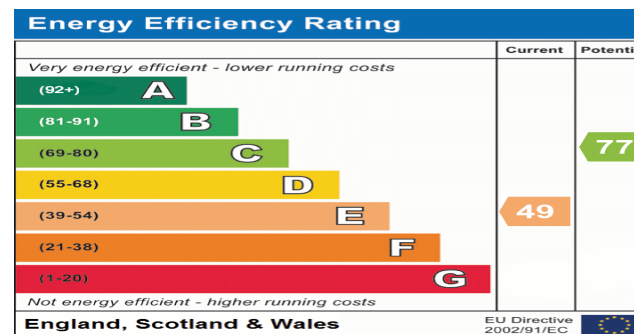


PROPERTY DESCRIPTION

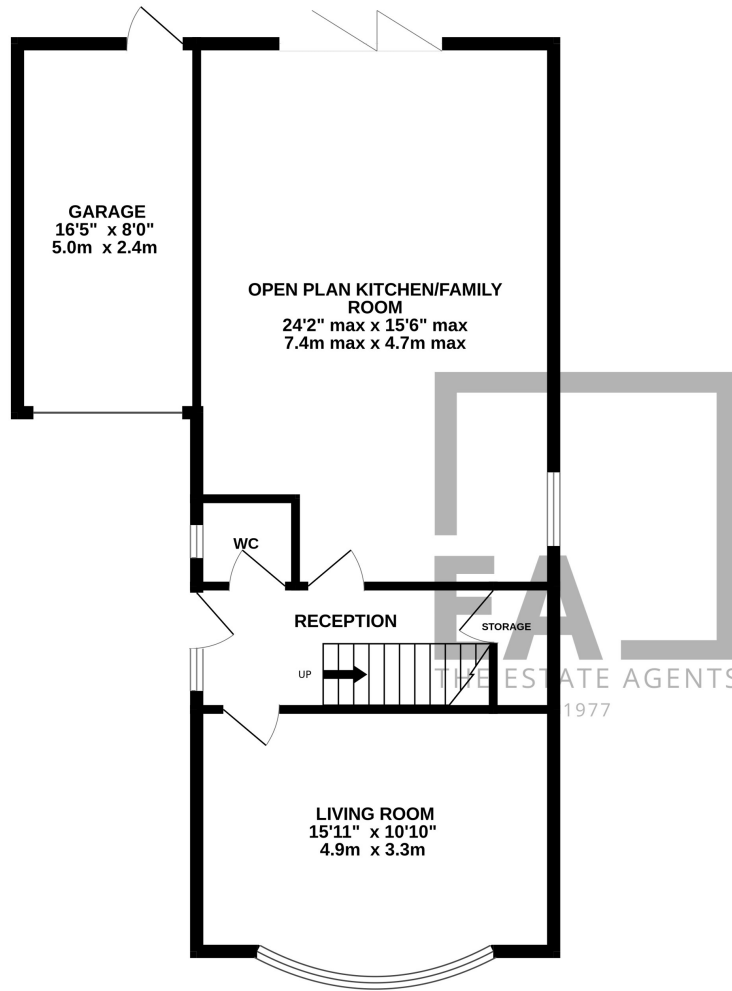
The Estate Agents are pleased to present this spacious three bedroom, detached property in a sought after area of Parklands, within easy reach of local amenities and schools. The accommodation which has been recently renovated by the current owner briefly comprises; a welcoming entrance hall, cloakroom, living room and a stunning, extended, open plan kitchen & dining room. On the first floor there's a beautiful family bathroom and three generous bedrooms. Outside the property has gardens to the front and rear, off road parking and large single garage.

POINTS OF INTEREST

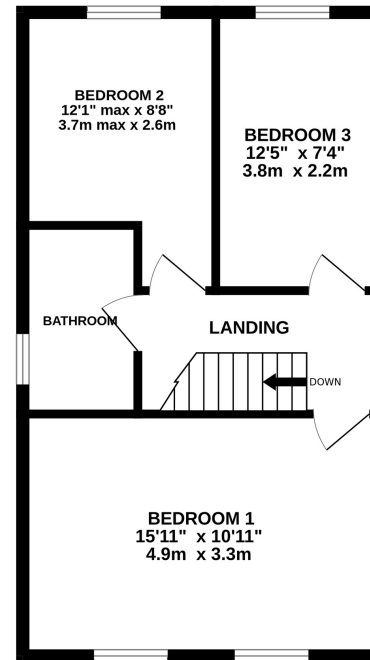
- Three Bedroom Detached
- Extended And Refurbished By The Current Owners
- Sought After Area
- Stunning, Open Plan Kitchen/Dining Room
- Ground Floor W.C
- Large Rear Garden
- Garage & Off Road Parking
- Within Easy Reach Of Local Amenities & Schools
- No Upward Chain



GROUND FLOOR
786 sq.ft. (73.0 sq.m.) approx.



1ST FLOOR
457 sq.ft. (42.5 sq.m.) approx.



TOTAL FLOOR AREA: 1243 sq.ft. (115.5 sq.m.) approx.

Whilst every attempt has been made to ensure the accuracy of the floorplan contained here, measurements of doors, windows, rooms and any other items are approximate and no responsibility is taken for any error, omission or mis-statement. This plan is for illustrative purposes only and should be used as such by any prospective purchaser. The services, systems and appliances shown have not been tested and no guarantee as to their operability or efficiency can be given.
Made with Metropix ©2026