



**WOODHOUSE**  
PROPERTY CONSULTANTS



Elderbek Close, Cheshunt, Hertfordshire EN7 6HT  
**£490,000 - Freehold**



## PROPERTY DESCRIPTION

\* Use the Virtual Tour to glide through this new home \*

Woodhouse are pleased to offer this beautifully-designed refurbished 4-Bedroom home situated in a quiet cul-de-sac in the desirable EN7 postcode.

This End-Terrace benefits from an open-plan arrangement, modern Kitchen & Downstairs Cloakroom. Upstairs there are the 4 x Bedrooms & Family Bathroom. The Master Bedroom also comes with its own En-suite.

Externally there is a West-facing Garden to the rear and the front can accommodate 2 or 3 cars as well as side access to the garden.

Elderbek Close is situated in West Cheshunt. There are some excellent & coveted schools nearby (eg for Primary: Flamstead End & Fairfields. For Secondary, there is Goffs Academy). The A10 and the M25 are a very short drive away, as well as the amenities of Brookfield Shopping Centre and the high streets of Cheshunt and Cuffley (both of which have stations with regular direct routes into London).

For greenery and family, there are the Broxbourne Woods, Paradise Wildlife Park and Lea Valley Nature Reserve.

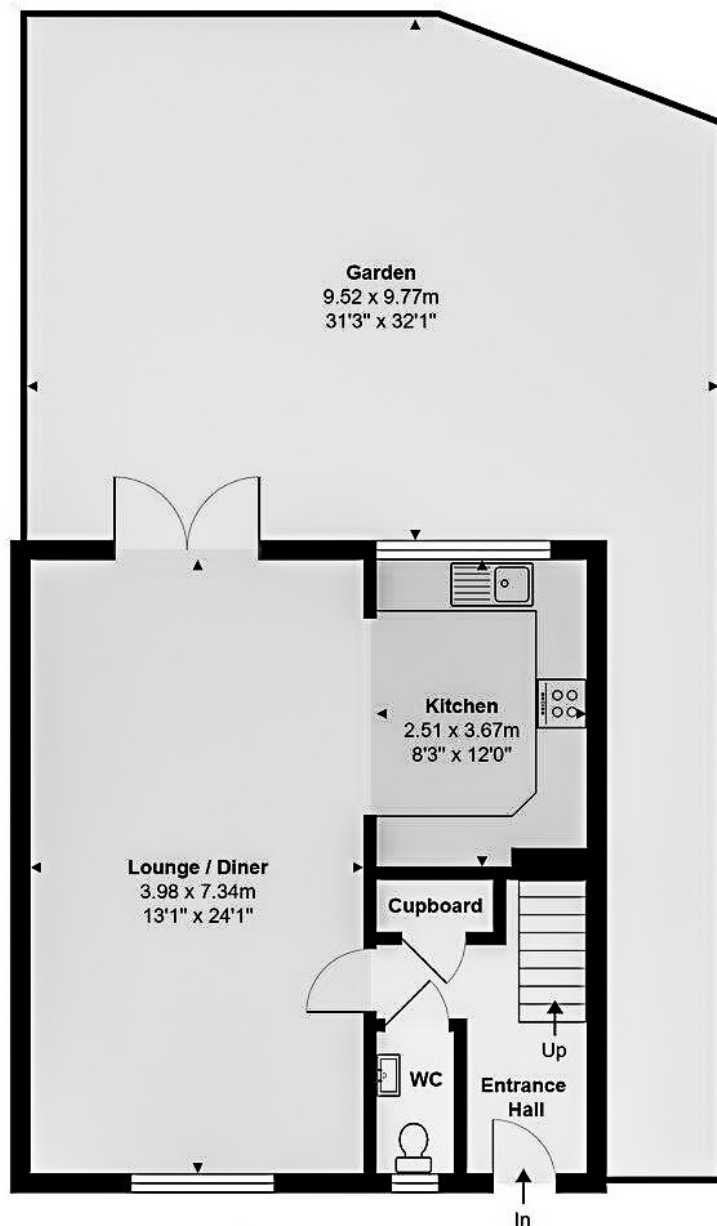
With no onward chain, contact Woodhouse today to come and see for yourself what this inviting home has to offer you and your family!

## POINTS OF INTEREST

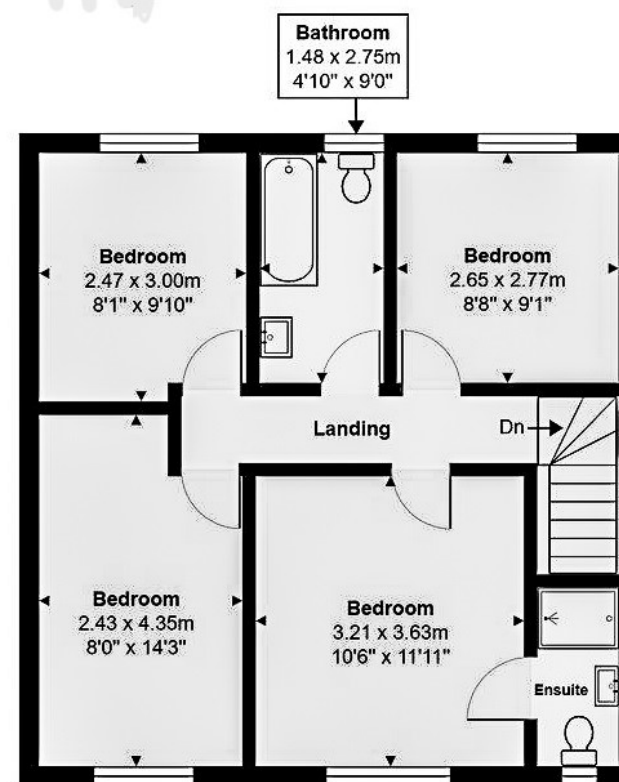
- VIRTUAL TOUR AVAILABLE
- Immaculately refurbished
- Beautifully spec'd
- 4 Bedrooms
- Master Bedroom with own En-suite
- Downstairs Cloakroom
- West-facing Garden
- Off Street Parking for 2 / 3 cars
- West Cheshunt neighbourhood
- Excellent schools catchment area
- Easy Reach of the A10 & M25



Total Area: 99.7 m<sup>2</sup> ... 1073 ft<sup>2</sup> (excluding garden)



**Ground Floor**  
Area: 48.8 m<sup>2</sup> ... 525 ft<sup>2</sup>



**First Floor**  
Area: 50.9 m<sup>2</sup> ... 547 ft<sup>2</sup>