



**Willow Court  
Wragby  
Lincoln  
Lincolnshire  
LN8 5RE**

**Offers in Excess of £170,000**

**bettermove**

# Willow Court Lincoln

Bettermove are proud to present this 2 bedroom semi-detached house in Wragby available with no forward chain.

The property benefits from double glazing, gas central heating throughout and has off street parking available via an allocated parking space. The council tax band is B.

The property is tenanted and rental yields can be obtained through Bettermove.

The interior of this well presented property comprises a spacious living room and fitted kitchen on the ground floor. The first floor consists of 2 bedrooms and the family bathroom. The exterior boasts a private rear garden, perfect for enjoying the summer months.

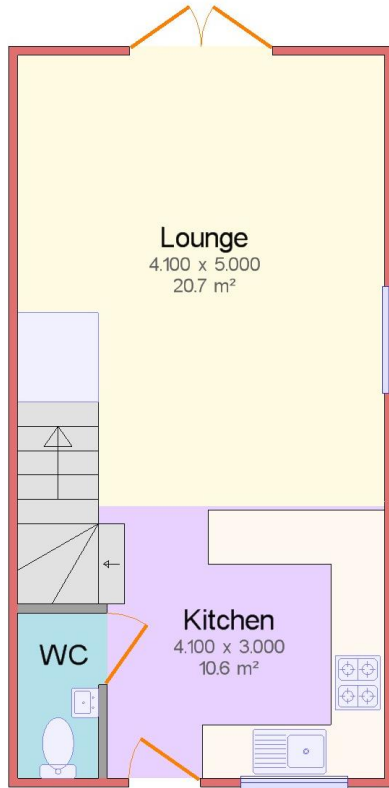
Located in the popular town of Wragby, the property is close to a range of amenities, including shops, supermarkets, restaurants and pubs. Excellent transport connections can be found from the A158 and many local buses.

This exciting opportunity should not be missed! All enquiries can be made through Bettermove on 0330 004 0050.



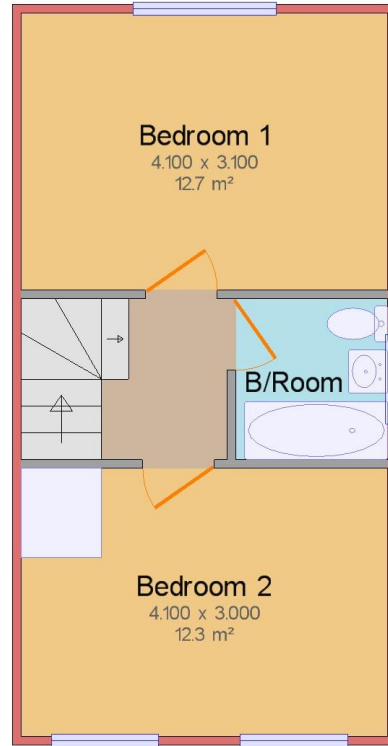
### Ground Floor

Gross internal area: 33.7 m<sup>2</sup> (362.7 ft<sup>2</sup>)



### First Floor

Gross internal area: 33.3 m<sup>2</sup> (358.3 ft<sup>2</sup>)



Drawings are for illustrative purposes only.  
Produced using Quick Sketch 3.17.2w



20-22 Bridge End, Leeds, LS1 4DJ  
t: 0330 004 0050 e: hello@bettermove.co.uk  
[www.bettermove.co.uk](http://www.bettermove.co.uk)