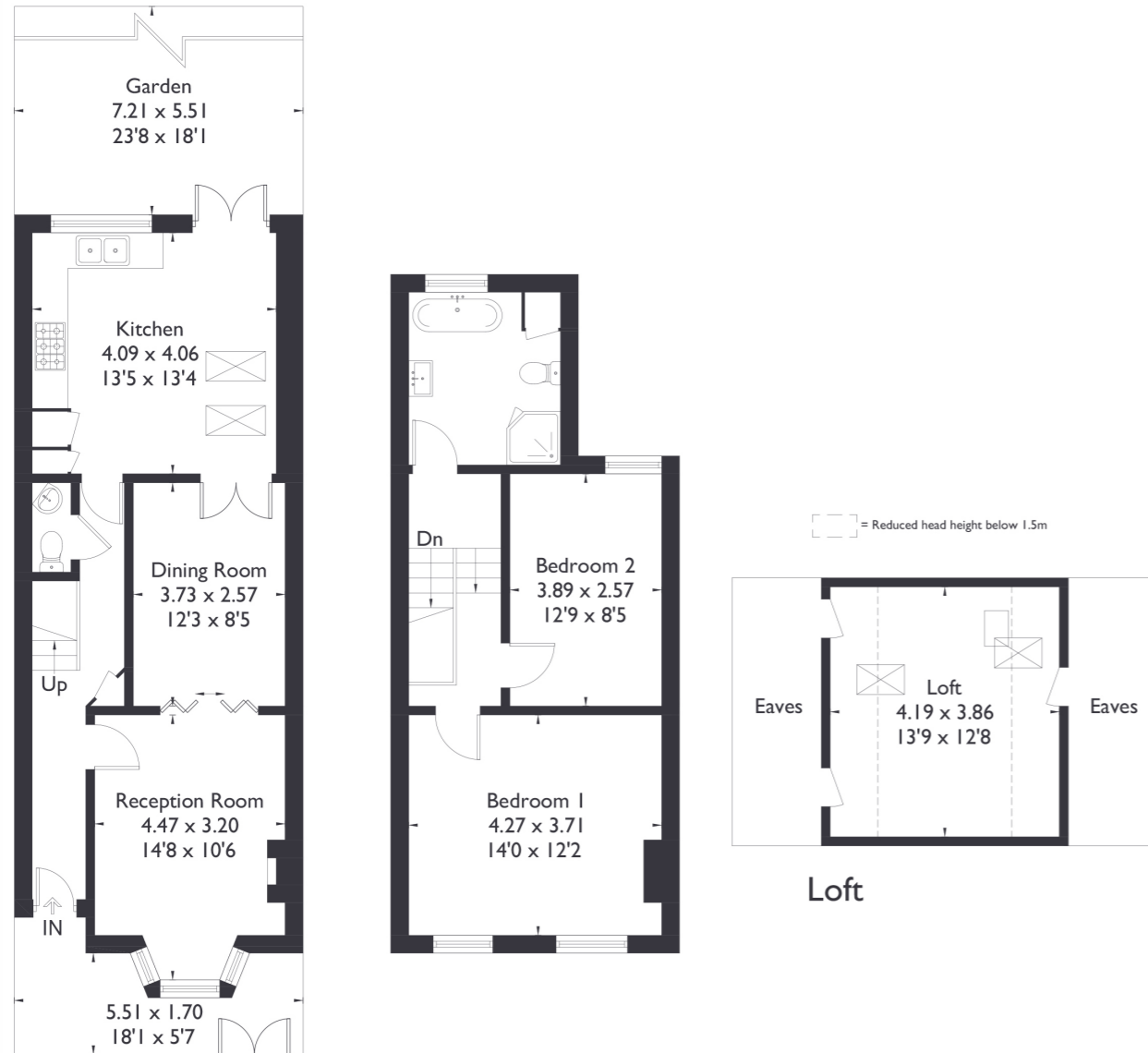


Northfield Road, W13

Approximate Floor Area = 90.8 sq m / 977 sq ft
Loft = 16.2 sq m / 174 sq ft
Total = 107 sq m / 1151 sq ft



Ground Floor

First Floor

Loft



2 BEDROOM HOUSE

Northfield Road, W13

£750,000

Welcome to this charming two bedroom end of terrace house, perfectly situated in a prime location. The property boasts a spacious reception area that can be conveniently divided by foldable doors, offering flexible living options. The middle dining room features double doors leading to the kitchen and dining area, which opens out onto a delightful garden ideal for outdoor relaxation.

FEATURES

- Two Bedrooms
- One Bathrooms/Downstairs W/C
- Separate Kitchen/Living
- Close To Local Amenities
- Fielding Primary School
- Northfields Station
- EPC Rating E



2 BEDROOM HOUSE

Northfield Road, W13

Upstairs, you'll find a generously sized bathroom with both a separate bath and shower, along with two large double bedrooms.

The loft room is fully functional, well insulated, and offers versatile space for various uses. With potential for further extension, this home is brimming with possibilities. Located just a 10 minute walk from Northfields Station and within a 15 minute stroll of West Ealing's Elizabeth Line station, this property is excellently connected. It also falls within the catchment area for the highly regarded Fielding Primary School and is close to Northfields' vibrant amenities, making it an ideal choice for families and commuters alike

EPC Rating E.

