



brown & kay

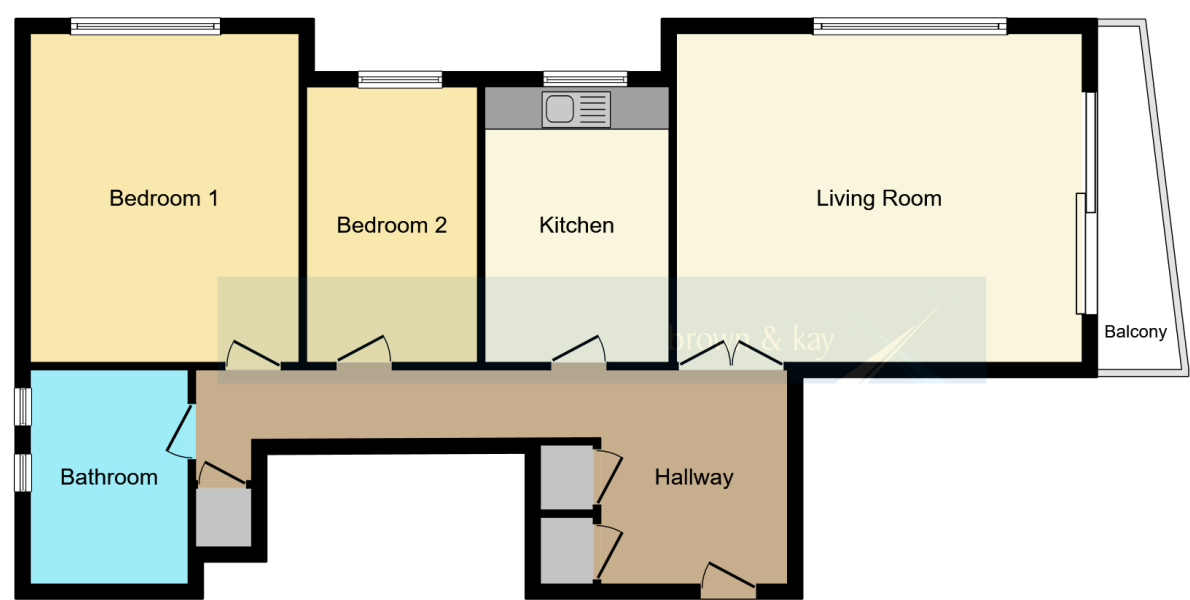
residential sales

lettings

mortgages

land & new homes

auctions



Floor Plan



This floor plan is for illustrative purposes only. It is not drawn to scale. Any measurements, floor areas (including any total floor area), openings and orientations are approximate. No details are guaranteed, they cannot be relied upon for any purpose and do not form any part of any agreement. No liability is taken for any error, omission or misstatement. A party must rely upon its own inspection(s). Powered by www.Propertybox.io

rightmove 
find your happy

DISCLAIMER PROPERTY DETAILS: These particulars, whilst believed to be accurate are set out as a general outline only for guidance and do not constitute any part of an offer or contract. Intending purchasers should not rely on them as statements or representation of fact, but must satisfy themselves by inspection or otherwise as to their accuracy. We have not carried out a detailed survey nor tested the services, appliances and specific fittings. Room sizes should not be relied upon for carpets and furnishings. The measurements given are approximate. No person in this firm's employment has the authority to make or give any representation or warranty in respect of the property.

20, Seamoor Road, Bournemouth, Dorset, BH4 9AR Also at: 30 Hill Street, Poole BH15 1NR Tel: 01202 676292



Email: sales@brownandkay.co.uk Web: www.brownandkay.co.uk Tel: 01202 765995



Flat 7, Ashton Court 46 Western Road, BRANKSOME PARK BH13 6EU

£285,000

The Property

Brown and Kay are pleased to market this two bedroom apartment situated on the first floor of this popular development. Ideally positioned within walking distance of Westbourne, this home has much to offer. The well planned accommodation boasts a fitted kitchen, dual aspect living room with balcony, two bedrooms, and shower room. Furthermore, there is a garage, a share of the freehold and with no forward chain this is a must see home.

Ashton Court is located in sought after Branksome Park ideally positioned within reach of all the area has to offer. The bustling village of Westbourne with its wide and varied range of cafe bars, restaurants and boutique shops as well as the usual high street names such as Marks and Spencer food hall is within walking distance, as are bus services which operate to surrounding areas. Miles upon miles of sandy shores and scenic promenade are also within comfortable distance and stretch to Bournemouth town centre and beyond in one direction, and the famous Sandbanks in the other.

COMMUNAL ENTRANCE HALL

With secure entry and lift to the first floor.

ENTRANCE HALL

Airing cupboard with immersion and water tank, two further storage cupboards.

LIVING ROOM

18' 3" x 14' 5" (5.56m x 4.39m) Dual aspect with double glazed window to the front and sliding door to the balcony, feature fireplace surround.

KITCHEN

12' 11" x 7' 10" (3.94m x 2.39m) Fitted kitchen equipped with a range of wall and base units, inset one and a half bowl sink unit with drainer, integrated dishwasher, freestanding oven and hob with extractor over, free standing fridge/freezer, UPVC double glazed window to the front.

BEDROOM ONE

14' 8" x 11' 11" (4.47m x 3.63m) UPVC double glazed window to the front, fitted wardrobes and chest drawers, radiator.

BEDROOM TWO

13' 1" x 8' 4" (3.99m x 2.54m) UPVC double glazed window to the front, vanity unit with sink, radiator.

SHOWER ROOM

Two frosted windows to the side aspect, shower cubicle with mains fed shower, w.c. and vanity unit with wash hand basin, radiator.

COMMUNAL GROUNDS

Ashton Court occupies well maintained communal grounds which are laid to lawn with mature surround.

GARAGE

Located in a block.

TENURE - SHARE OF FREEHOLD

Length of Lease - 999 years from 24th June 1960

Maintenance - To be confirmed

Management Agent - To be confirmed

COUNCIL TAX - BAND D