



Wilkinson Way, London, W4 5XA

Cow & Co
LONDON



GUIDE PRICE OF £275,000-375,000. A well presented one double bedroom apartment situated in popular location in Chiswick. The property is bright and spacious throughout and would be a great buy for a first time buyer or a 'buy to let' investor.

Wilkinson Way is within half a mile of Acton Central station and within a mile of both Turnham Green and Chiswick Park Station. Also offering excellent bus routes (E3, N11) and for motorists access to the A4/M4.

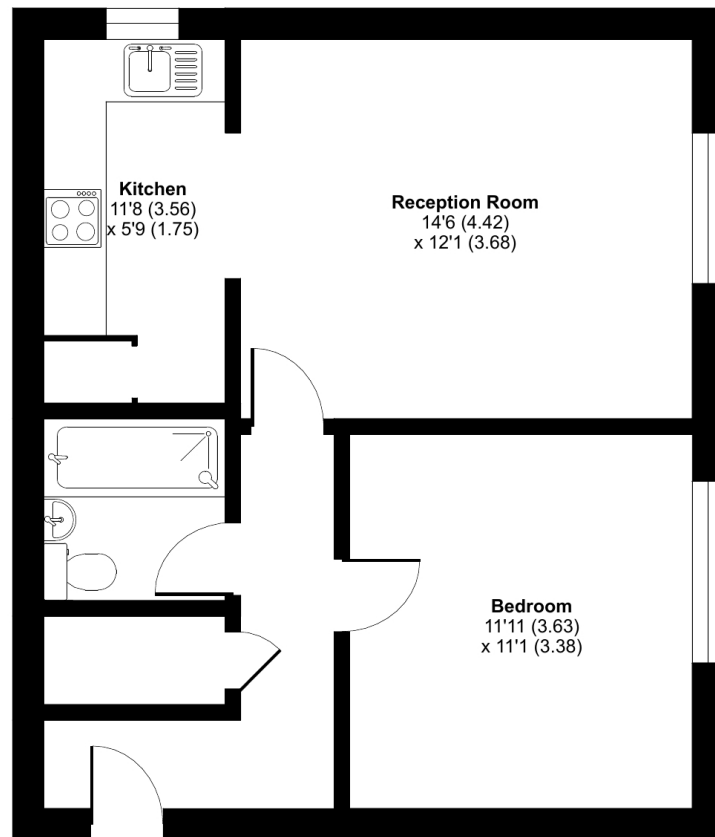


- One double bedroom apartment situated in Chiswick
- Spacious living area with ample space to dine and entertain
- Security entry phone system
- Large double bedroom
- Moments from Southfields Park
- Close to amenities and transport links
- Well appointed bathroom
- Communal gardens and parking

Wilkinson Way, London, W4

Approximate Area = 513 sq ft / 48.1 sq m

For identification only - Not to scale



FIRST FLOOR



Floor plan produced in accordance with RICS Property Measurement Standards incorporating International Property Measurement Standards (IPMS2 Residential). © nchecon 2023. Produced for Cow & Co Properties Ltd. REF: 1059050

Tel: 0208 065 0010
Email: thehub@cowandco-london.com
Web: cowandco-london.com

Agents note: All measurements are approximate and whilst every attempt has been made to ensure accuracy they are for general guidance only and must not be relied on. The fixture and fittings referred to have not been tested and therefore no guarantee can be given that they are in working order. Internal photographs are reproduced for general information and it must not be inferred that any item shown is included with the property.

Cow & Co

LONDON