



Barclay Cottage

BENTHAM



BARCLAY COTTAGE



Tucked away in the heart of Bentham, amidst the rolling hills and verdant landscapes of the Yorkshire Dales, Barclay Cottage stands as a picturesque sanctuary of rural tranquillity. This captivating 3-bedroom end terrace cottage exudes an irresistible charm, offering a harmonious blend of character and contemporary comfort - the perfect retreat for those seeking a quintessential country lifestyle.





Take a closer look...



Property Type:

End Terrace

Square Footage:

974 sqft

Council Tax Band

C

EPC Rating

tbc

Tenure

Freehold

Why Bentham?



BEYOND THE CONFINES OF BARCLAY COTTAGE, RESIDENTS ARE SPOILED FOR CHOICE WITH AN ARRAY OF AMENITIES AND ATTRACTIONS WITHIN EASY REACH. BENTHAM'S CHARMING TOWN CENTRE BECKONS WITH ITS ECLECTIC MIX OF BOUTIQUE SHOPS, QUAIN T CAFES, AND TRADITIONAL PUBS, OFFERING AMPLE OPPORTUNITIES FOR LEISURELY STROLLS AND GATHERINGS WITH NEIGHBOURS.

FOR THOSE WITH A PASSION FOR THE GREAT OUTDOORS, THE SURROUNDING COUNTRYSIDE PRESENTS A VERITABLE PLAYGROUND OF NATURAL WONDERS, WITH SCENIC TRAILS WINDING THROUGH LUSH VALLEYS AND RUGGED MOORLANDS, PROVIDING ENDLESS OPPORTUNITIES FOR HIKING, CYCLING, AND WILDLIFE SPOTTING.

WITH ITS IDYLIC LOCATION, MODERN CONVENIENCES, AND TIMELESS ALLURE, BARCLAY COTTAGE REPRESENTS A RARE OPPORTUNITY TO EMBRACE THE ESSENCE OF COUNTRYSIDE LIVING IN THE HEART OF BENTHAM. WHETHER AS A PERMANENT RESIDENCE OR A TRANQUIL RETREAT FROM THE BUSTLE OF CITY LIFE, THIS ENCHANTING COTTAGE OFFERS A SANCTUARY WHERE CHERISHED MEMORIES ARE MADE AND MOMENTS ARE SAVOURED AMIDST THE TIMELESS BEAUTY OF RURAL ENGLAND.

Bentham Town





PARKING

on street

GARAGE



GARDEN



APPROACHING BARCLAY COTTAGE, ONE IS IMMEDIATELY STRUCK BY ITS ENCHANTING FACADE, FRESHLY REVITALISED WITH A NEW ROOF AND REJUVENATED WINDOWS THAT GLEAM IN THE GENTLE SUNLIGHT. THE COTTAGE SITS GRACEFULLY WITHIN ITS SURROUNDINGS, A TESTAMENT TO TIMELESS ARCHITECTURE AND TRADITIONAL COUNTRY LIFE. A COURTYARD GARDEN, ENVELOPED BY TASTEFUL RAISED BEDS, PROVIDES AN OASIS WHERE RESIDENTS CAN SAVOUR MOMENTS OF PEACE AND SERENITY AMIDST THE BUZZ OF THE TOWN. THE PERFECT FINISHING TOUCH IS A FABULOUS OUTBUILDING, WHICH COULD BE CONVERTED INTO A HOME OFFICE, ANNEX OR OTHER, TO SUIT YOUR INDIVIDUAL NEEDS (SUBJECT TO THE RELEVANT PLANNING PERMISSIONS).



BARCLAY COTTAGE

18A MAIN STREET

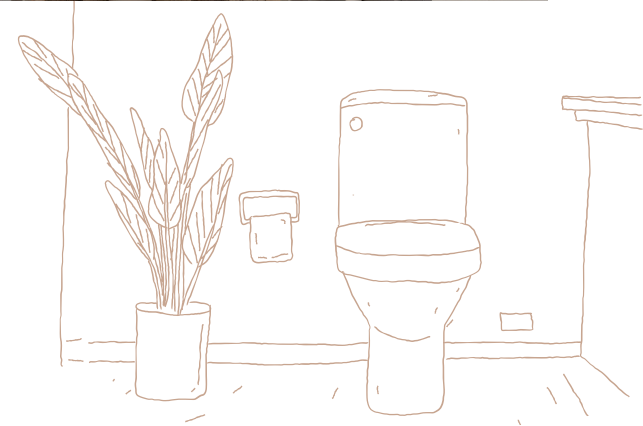




Zzz... 9000







WHERE CAN I FIND...



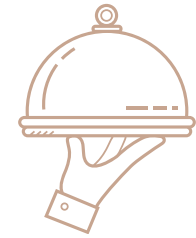
The Closest School?

Bentham Community Primary School is just 0.4 miles away.



The Local Shop?

Bentham Co-Op is just 194 ft from your doorstep. Great for those essentials!



A Delicious Meal?

The Black Bull and it's fabulous menu awaits you, only 89ft away.



Somewhere Nice to Walk the Dog?

The River Wenning can be accessed just a short 7 minute walk from your home



A Refreshing Pint?

The Coach House is just 49ft round the corner, you could be back home in under 2 minutes!

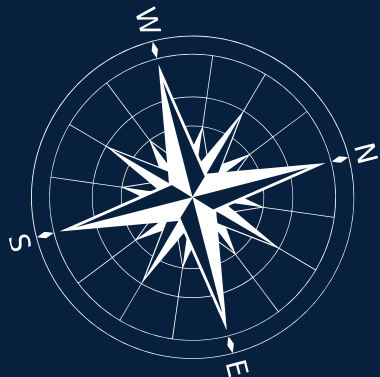
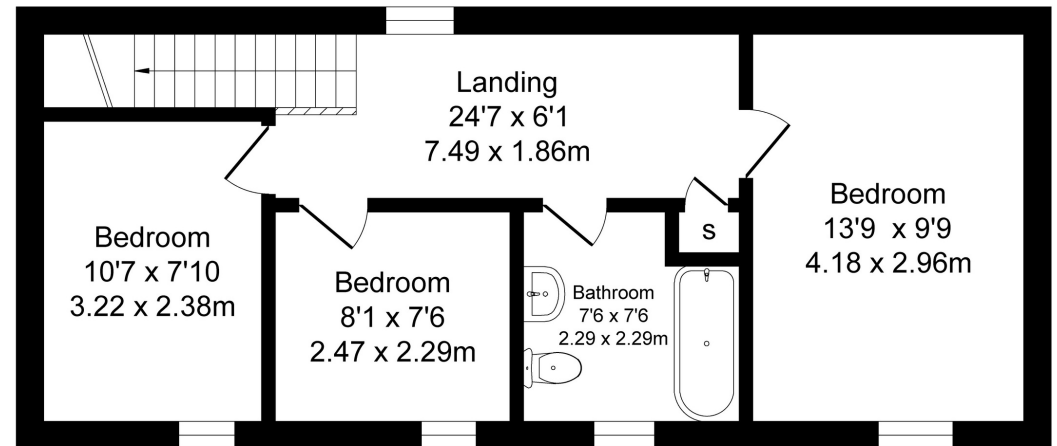
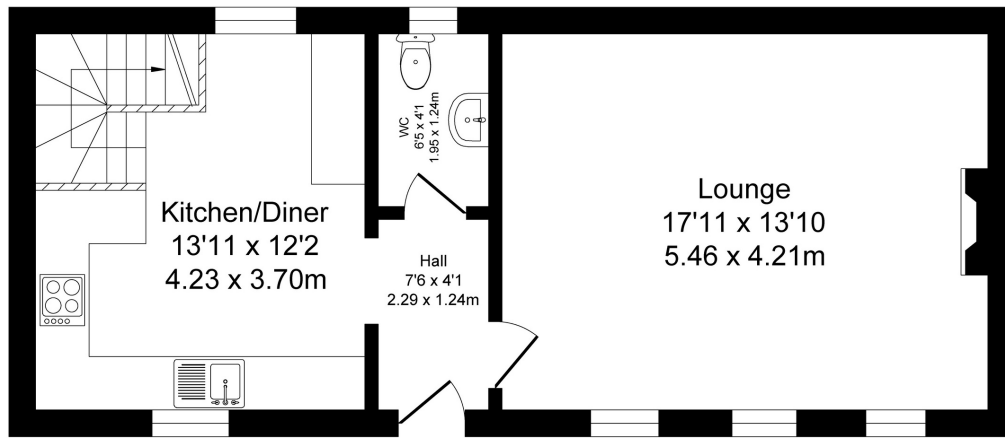


Your Local Property Experts?

Our office is a 20 minute drive away - pop in to say hello, anytime!







Total Floor Area: 974 sq ft (90.4 sq.m) approx.

Ground Floor: 487 sq.ft (45.2 sq.m) approx.

First Floor: 487 sq.ft (45.2 sq.m) approx.

Whilst every attempt has been made to ensure the accuracy of this floorplan, measurements of doors, windows, rooms and any other items are approximate and no responsibility is taken for any error, omission or mis-statement. This plan is for illustrative purposes only and should be used as such by any prospective purchaser. The services, systems and appliances shown have not been tested and no guarantee as to their operability or efficiency can be given.





Barclay Cottage, 18A Main Street, Bentham, LA2 7HL

 [///chain.supported.spend](https://chain.supported.spend)



015242 56625 | team@lunevalleyestates.com | www.lunevalleyestates.com