



48 Henton Road, Leicester LE36AX

MOORE  
& YORK



### Property at a glance:

- Victorian Terraced Home
- No Upward Chain
- Close To Amenities
- Two Reception Rooms
- Two Double Bedrooms
- Gas Central Heating & D\G
- Ideal First Time & Investment Buy.
- Popular Location

Offers In Excess Of £150,000

Freehold



Victorian two double bedroom terraced home situated within walking distance of local facilities and within a short drive of the excellent amenities of West End including an excellent range of shops, restaurants and cafes. The property is being sold with no upward chain and the centrally heated and double glazed accommodation briefly comprises to the ground floor two receptions and kitchen and to the first floor two bedrooms and bathroom and stands with patio garden to rear. The property would ideally suit the first time and investment buyer alike and we recommend a early viewing.

#### DETAILED ACCOMMODATION

Hardwood door leading to;

#### FRONT RECEPTION

11' 8" x 11' 5" (3.56m x 3.48m) Radiator, feature original cast iron and patterned tiled fire with hardwood surround, ornate coving, central rosary, UPVC sealed double glazed window.

#### REAR RECEPTION

11' 8" x 11' 5" (3.56m x 3.48m) Display fire recess with exposed brickwork and beam mantle, radiator, stairs leading to first floor accommodation, radiator, UPVC sealed double glazed window.

#### KITCHEN

11' 11" x 5' 11" (3.63m x 1.80m) Comprising sink unit with cupboard under, base units with tiled work surfaces over draw and cupboards under, complimentary wall mounted eye level cupboards, built in cooker and four piece gas hob, tiled floor, UPVC sealed double glazed window and door to rear garden.

#### FIRST FLOOR LANDING

#### BEDROOM 1

11' 8" x 11' 5" (3.56m x 3.48m) Radiator, UPVC sealed double glazed window, cast iron fire surround.



## BEDROOM 2

11' 5" x 8' 4" (3.48m x 2.54m) Radiator, UPVC sealed double glazed window, cast iron fire surround.

## BATHROOM

11' 10" x 6' 0" (3.61m x 1.83m) Three piece suite comprising panelled bath, pedestal wash hand basin and low level WC, airing cupboard housing central heating boiler, radiator, UPVC sealed double glazed.

## OUTSIDE

Patio garden to rear.

## SERVICES

All main services are understood to be available. Central heating is gas-fired, electric power points are fitted throughout the property, windows are double glazed.

## VIEWING

Strictly through Moore & York Ltd., who will be pleased to supply any further information required and arrange appropriate appointments.

## MAKING AN OFFER

As part of our service to our Vendors, we have a responsibility to ensure that all potential buyers are in a position to proceed with any offer they make and would therefore ask any potential purchaser to speak with our Mortgage Advisor to discuss and establish how they intend to fund their purchase. Additionally, we can offer Independent Financial Advice and are able to source mortgages from the whole of the market, helping you secure the best possible deal and potentially saving you money.

If you are making a cash offer, we will ask you to confirm the source and availability of your funds in order to present your offer in the best possible light to our Vendor.

## TENURE

Freehold

## COUNCIL TAX BAND

Leicester A

## FLOOR PLANS

Purchasers should note that if a floor plan is included within property particulars it is intended to show the relationship between rooms and does not reflect exact dimensions or indeed seek to exactly replicate the layout of the property. Floor plans are produced for guidance only and are not to scale. Purchasers must satisfy themselves of matters of importance by inspection or advice from their Surveyor or Solicitor.

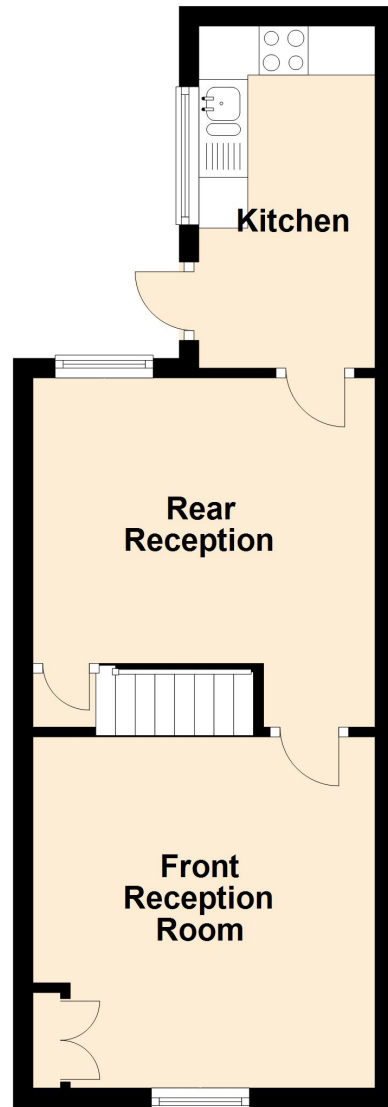
## IMPORTANT INFORMATION

Although we endeavour to ensure the accuracy of property details we have not tested any services, heating, plumbing, equipment or apparatus, fixtures or fittings and no guarantee can be given or implied that they are connected, in working order or fit for purpose.



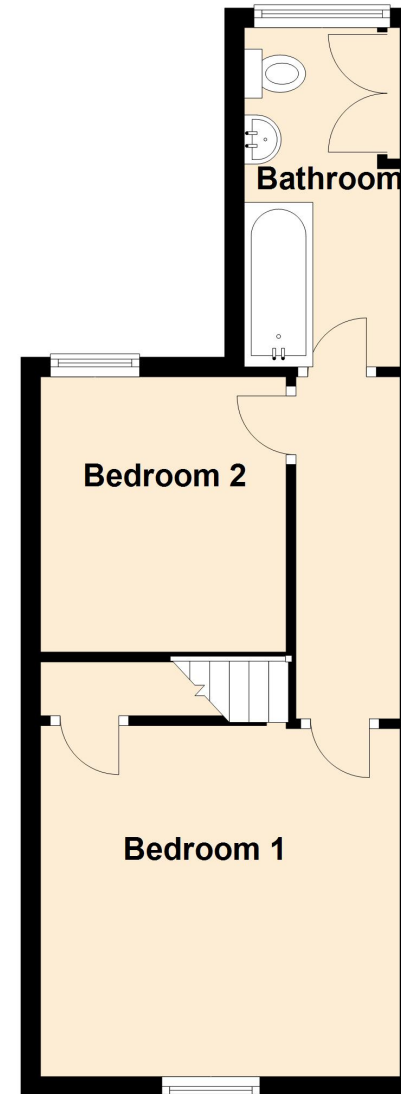
## Ground Floor

Approx. 31.8 sq. metres (341.8 sq. feet)



## First Floor

Approx. 31.9 sq. metres (343.0 sq. feet)



Total area: approx. 63.6 sq. metres (684.8 sq. feet)

IMPORTANT: All measurements are approximate. Floor plans and plot plans are carefully measured but are approximate and for guidance only. These details are prepared by ourselves on instruction of the property owner and any fixtures, services and equipment referenced within have not been tested by Moore & York and no Warranty(ies) can be given. These particulars are intended to give a fair representation of the property but accuracy cannot be guaranteed, nor do they in any way constitute an offer or contract. No person in our employment is able to make factual claims or give guarantees regarding this property – if there are points you wish to have clarified before making an offer please make enquiries with ourselves directly or via your appointed legal advisor

