



Badgers Acre, Stone Allerton, Axbridge BS26 2NW

£1,350,000 Freehold

COOPER
AND
TANNER



Badgers Acre, Stone Allerton, BS26 2NW

 6  3  3 EPC D £1,350,000 Freehold

Description

Elegant and substantial six-bedroom, modern, character property, with beautiful stone façade and Georgian-style porch, with stunning, landscaped gardens, situated in a tranquil village location.

Combining the character and charm of a period property with contemporary comforts and expectations of a modern home, this beautiful house, built in 1989, echoes the symmetry and style of a more genteel Georgian era. The current owners have carried out extensive improvements over the three decades since they moved in. A full list can be provided at a viewing or upon request.

On the ground floor of this extraordinary home, there is a satisfying circular flow round the well-proportioned rooms from the grand entrance hall, with its pale limestone flooring and wide, sweeping staircase, through the open-plan kitchen/breakfast room, to the light and spacious dining and sitting rooms, before returning to the entrance hall. The kitchen is fitted with farmhouse-style units and breakfast bar, with pale coloured doors and drawer fronts, framed in warm wood and topped with contrasting work surfaces. Appliances include a Miele oven and Bosch hob. Further storage is provided by a walk-in pantry and in the adjoining utility areas where there is plenty of room for white goods. The breakfast bar overlooks a cosy, comfortable seating area with a wood burning stove. This open-plan space extends out into the garden room, which is a fabulously light, vaulted, single storey, corner extension with stunning views across the immaculate gardens. The dining room, with its bay window and delightful window seat, provides a more formal entertaining space than the breakfast and garden rooms. Double doors link through to the sitting

room which features an extraordinary inglenook fireplace with a log burning stove for those cooler months, whilst two sets of French doors can be flung open in the summer to extend this sociable space into the lovely gardens. A ground floor study, which is next to the cloakroom, could transform into a bedroom if needed.

Upstairs, a galleried landing with a beautiful, stained glass, arched window, connects the five bedrooms and family bathroom. The two largest double bedrooms are both at the rear of the house, benefitting from breathtaking views across the gardens to the countryside beyond. The principal bedroom, the larger of the two, has built-in wardrobes and a large ensuite bathroom. The other one has an ensuite shower room, built-in cupboard and dual aspect windows taking in the gardens on both sides. There are three further bedrooms which share a family bathroom.

Badger's Acre is surrounded by exceptionally beautifully landscaped, mature gardens designed to excite the senses throughout the seasons with its colours, shapes, texture and scents. Shingle and paved pathways with brick edging and stepping stones meander through level lawns, leading to hidden seating areas sprinkled across the plot. Obscured from view by mature planting is the productive kitchen garden with its raised brick beds, paved walkways, composting area, garden sheds and Gabriel Ash greenhouse with light and power. From the road, a sweeping, South Cerney stone driveway runs across the front of the house to the adjoining carport, tack room and double garage. The driveway is framed by thoughtfully designed planting and there is plenty of space for parking and turning.









Location

The tranquil, rural yet accessible hamlets of Stone Allerton and Chapel Allerton lie between the historic villages of Wedmore and Axbridge, with direct links to Bristol International Airport and the M5 junction 22 via the A38. Local amenities include The Valley Smokehouse at The Wheatsheaf Inn which has a kitchen store and coffee shop; and the Ad Astra Cider Barn which is a social village hub. Wedmore, Axbridge and Cheddar offer a wide selection of local shops and amenities including supermarkets, post offices, chemists, dentists and doctors' surgeries, along with a tempting range of pubs, restaurants and cafes. There are numerous sports' clubs including Wedmore Golf Club, football, tennis, bowls and cricket clubs; sailing and fishing on Cheddar reservoir; and a swimming pool and leisure facilities in Cheddar. Local state schooling includes Wedmore First School, Hugh Sexey Middle School and Kings of Wessex Academy providing comprehensive education. Private schooling is available at Sidcot School in Sidcot, Millfield School in Street, and the Cathedral School in Wells. School busses pick up locally.



Local Information Stone Allerton

Local Council: Somerset

Council Tax Band: G

Heating: Oil

Services: Mains water and electricity, private drainage

Tenure: Freehold



Motorway Links

- M5



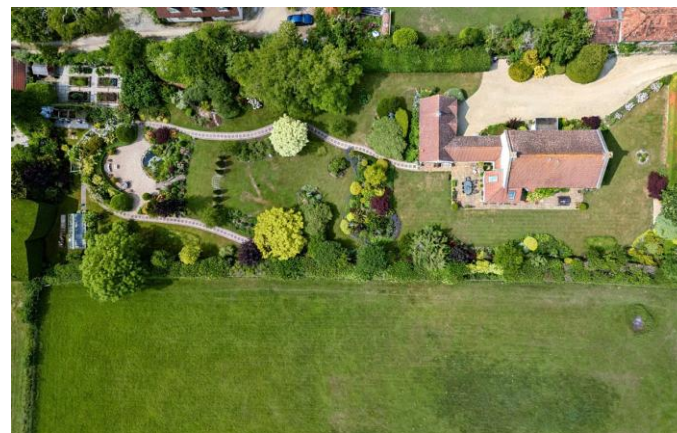
Train Links

- Highbridge
- Weston-super-Mare



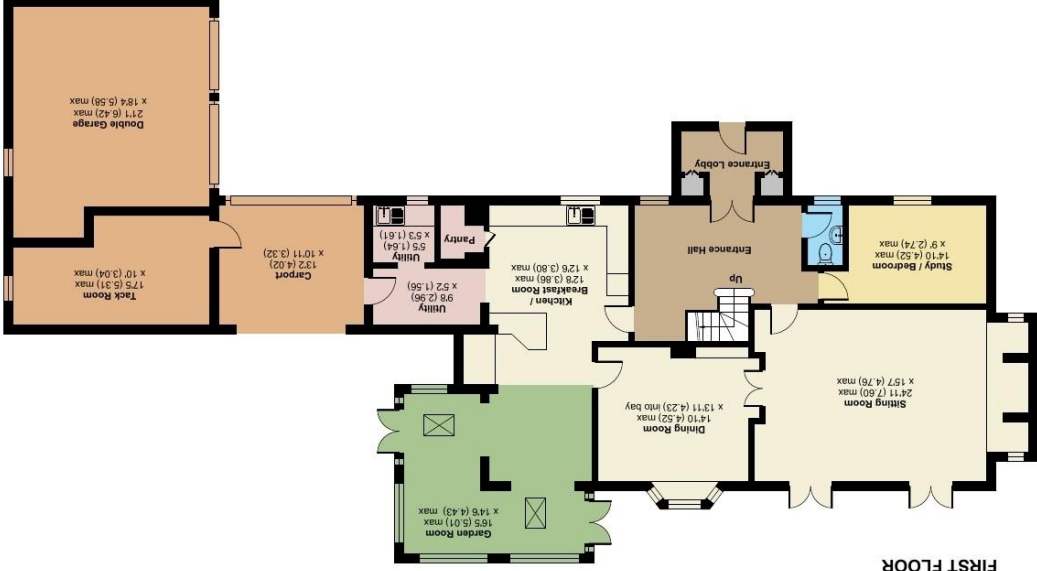
Nearest Schools

- Hugh Sexey Middle School
- Wedmore First School
- Kings of Wessex Academy



Badgers Acre, Stone Allerton, Axbridge, BS26

Approximate Area = 2681 sq ft / 249 sq m (excludes carport)
Garage = 343 sq ft / 31.8 sq m
Outbuilding = 155 sq ft / 14.3 sq m
Total = 3179 sq ft / 295.1 sq m
For identification only - Not to scale



Floor plan produced in accordance with RICS Property Measurement Standards (IPMS2 Residential). © nhdhcom 2025.
Incorporating International Property Measurement Standards (IPMS2 Residential). © nhdhcom 2025.
Produced for Cooper and Tanner. REF: 1301094

WEDMORE OFFICE

telephone 01934 713296

Providence House, The Borough, Wedmore, Somerset BS28 4EG

wedmore@cooperandtanner.co.uk

Important Notice: These particulars are set out as a general outline only for the guidance of intended purchasers and do not constitute, nor constitute part of, an offer or contract. All descriptions, dimensions, warranties and other details are given without responsibility and any intending purchasers should not rely on them as statements or representations of fact but must satisfy themselves by inspection or otherwise as to the correctness of each of them.



COOPER
AND
TANNER