



Humberston Avenue
Humberston
Grimsby
Lincolnshire
DN36 4SR

Offers In Excess Of £370,000

bettermove

Humberston Avenue

Grimsby

Bettermove are proud to present this 3 bedroom detached house in Humberston available with no forward chain.

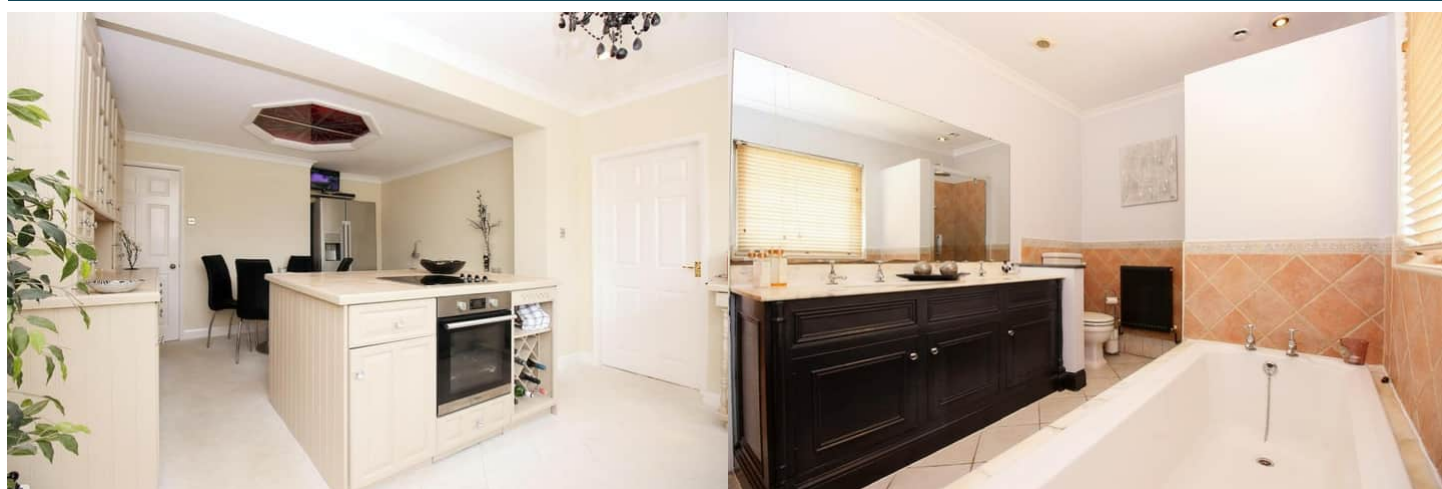
The property benefits from double glazing, gas central heating throughout and has off street parking available for multiple cars.

The council tax band is F.

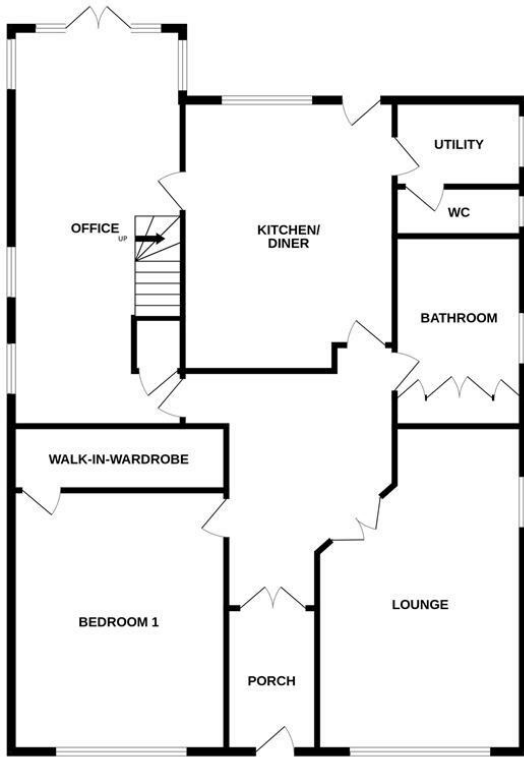
The interior of this beautifully presented property comprises a spacious living room, office, bedroom with walk in wardrobe, family bathroom, utility room and fitted kitchen diner on the ground floor. The first floor consists of 2 bedrooms and en-suite. The exterior boasts a private rear garden, perfect for enjoying the summer months.

Located in the prestigious village of Humberston, the property is close to a range of amenities, including shops, supermarkets, restaurants and pubs. Excellent transport connections can be found from the A16, A1031 and many local bus routes.

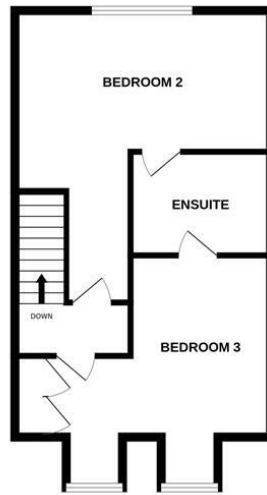
This exciting opportunity should not be missed. All enquiries can be made through Bettermove.



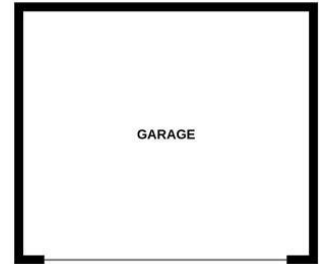
GROUND FLOOR
1480 sq.ft. (137.5 sq.m.) approx.



1ST FLOOR
492 sq.ft. (45.7 sq.m.) approx.



GARAGE
319 sq.ft. (29.6 sq.m.) approx.



TOTAL FLOOR AREA : 2291 sq.ft. (212.8 sq.m.) approx.

Whilst every attempt has been made to ensure the accuracy of the floorplan contained here, measurements of doors, windows, rooms and any other items are approximate and no responsibility is taken for any error, omission or mis-statement. This plan is for illustrative purposes only and should be used as such by any prospective purchaser. The services, systems and appliances shown have not been tested and no guarantee as to their operability or efficiency can be given.

Made with Metropix ©2025



20-22 Bridge End, Leeds, LS1 4DJ
t: 0330 004 0050 e: hello@bettermove.co.uk
www.bettermove.co.uk