



The Lynn Arms, Syderstone
Guide Price £250,000

BELTON DUFFEY



THE LYNN ARMS, THE STREET, SYDERSTONE, NORFOLK, PE31 8SD

A fantastic opportunity to purchase a freehold pub/restaurant with 5 en suite letting rooms, covered courtyard and pub garden in the heart of the village.

DESCRIPTION

The Lynn Arms is a rarely available period freehold pub/restaurant built of majority brick and flint walls under a pantile roof and situated in the heart of the popular and conveniently located village of Syderstone.

The property offers a traditional bar/restaurant area accessed off The Street with a further restaurant room and kitchen area. On the first floor, there are 5 en suite letting rooms with an office and cleaner's WC but also offers scope for easy conversion to provide owners' accommodation with separate access.

Outside, a wide double gated archway leads from the road to a covered courtyard area and a lawned pub garden beyond. The furniture, fixtures and fittings are available by separate negotiation.

SITUATION

Syderstone is a traditional Norfolk village, surrounded by undulating well-wooded countryside. It also has the benefit of Syderstone Common, an SSSI - an area of particular interest due to rare flora and fauna - notable for the presence of a population of natterjack toads. The Common is a beautiful wildlife haven popular with birdwatchers, ramblers and dog walkers.

The village has some fine cottages and houses built in the local brick and flint, a parish church, a thriving village hall and a well equipped children's playing field in the centre of the village.

BAR/RESTAURANT AREA

9.96m x 6.25m (32' 8" x 20' 6") at widest points.

A solid timber entrance door leads directly off The Street into a lobby with an opening into the spacious bar/restaurant area. Wide oak bar with hatch down to cellar and a door opening onto a staircase up to the office and bedroom accommodation beyond. Extensive dining space, fireplace housing a wood burning stove, natural slate floor tiles and 4 double aspect windows to the front and rear. Door leading outside to the covered passageway.



CELLAR

5.16m x 2.11m (16' 11" x 6' 11")

A hatch leads from the bar area with steps down to the cellar.

RESTAURANT AREA

9.55m x 3.57m (31' 4" x 11' 9") at widest points.

Good sized dining space with slate tiled floor, 3 windows and a glazed door to the courtyard and beer garden. Opening to:

KITCHEN

3.57m x 3.04m (11' 9" x 10' 0")

The kitchen area has been completely cleared ready for installation of a new kitchen. Area to the side with spaces for a fridge and freezer, door leading outside.

MALE TOILETS

Cubicle with WC, 3 urinals, wash basin.

FEMALE TOILETS

Cubicle with WC, wash basin.

FIRST FLOOR

The first floor is accessed via 2 separate staircases. 1 staircase leads from the bar area to an office with the second accessed from the covered passageway giving independent access to the bedrooms and owners' accommodation if required. Plans are available showing how bedrooms 1 and 2 could easily be converted to create separate owners' accommodation - please ask Belton Duffey for more information.

FIRST FLOOR LANDING

Space for an armchair, built-in cleaner's cupboard, cupboard housing the electric fuses. Doors to the 2 first first floor hallways leading to the bedroom accommodation.



BEDROOM 1

3.57m x 3.31m (11' 9" x 10' 10")

Vaulted ceiling, window to west and a door to a hallway with a door to:

EN SUITE BATHROOM

Suite comprising a panelled bath, shower cubicle, wash basin and WC. Window to the west.

BEDROOM 2

2.76m x 2.31m (9' 1" x 7' 7")

Window to west and a door to:

EN SUITE SHOWER ROOM

Suite comprising a shower cubicle, wash basin and WC.

BEDROOM 3

4.20m x 2.49m (13' 9" x 8' 2")

Window overlooking The Street and a door to:

EN SUITE SHOWER ROOM

Suite comprising a shower cubicle, wash basin and WC. Window overlooking The Street.

BEDROOM 4

3.10m x 2.84m (10' 2" x 9' 4")

Window overlooking The Street and a door to:

EN SUITE SHOWER ROOM

Suite comprising a shower cubicle, wash basin and WC.

BEDROOM 5

3.10m x 2.09m (10' 2" x 6' 10")

Window overlooking The Street and a door to:

EN SUITE SHOWER ROOM

Suite comprising a shower cubicle, wash basin and WC.

CLEANER'S WC

Airing cupboard housing the hot water cylinder, wash basin and WC.



OFFICE

3.10m x 2.16m (10' 2" x 7' 1")

Worktop with wash basin, window overlooking The Street.

OUTSIDE

The Lynn Arms is accessed directly off The Street with wide double timber gates leading through the building and opening onto a covered passageway where the toilet facilities are located. Beyond the passageway, there is a covered courtyard area which leads to a lawned beer garden.

DIRECTIONS

From Fakenham take the A148 in the direction of King's Lynn and turn right at the junction signposted B1454 Hunstanton and Docking. Proceed along this road and take the third turning on the right towards Syderstone. Continue along this road into the heart of the village where you will see the property on the right-hand side, with a Belton Duffey 'For Sale' board in the window.

OTHER INFORMATION

Mains electricity, mains water and mains drainage. Oil-fired central heating to radiators. EPC Rating Band D.

Borough Council of King's Lynn and West Norfolk, Kings Court, Chapel Street, King's Lynn, Norfolk, PE30 1EX. Rateable Value of £2,750 (since 1 April 2026).

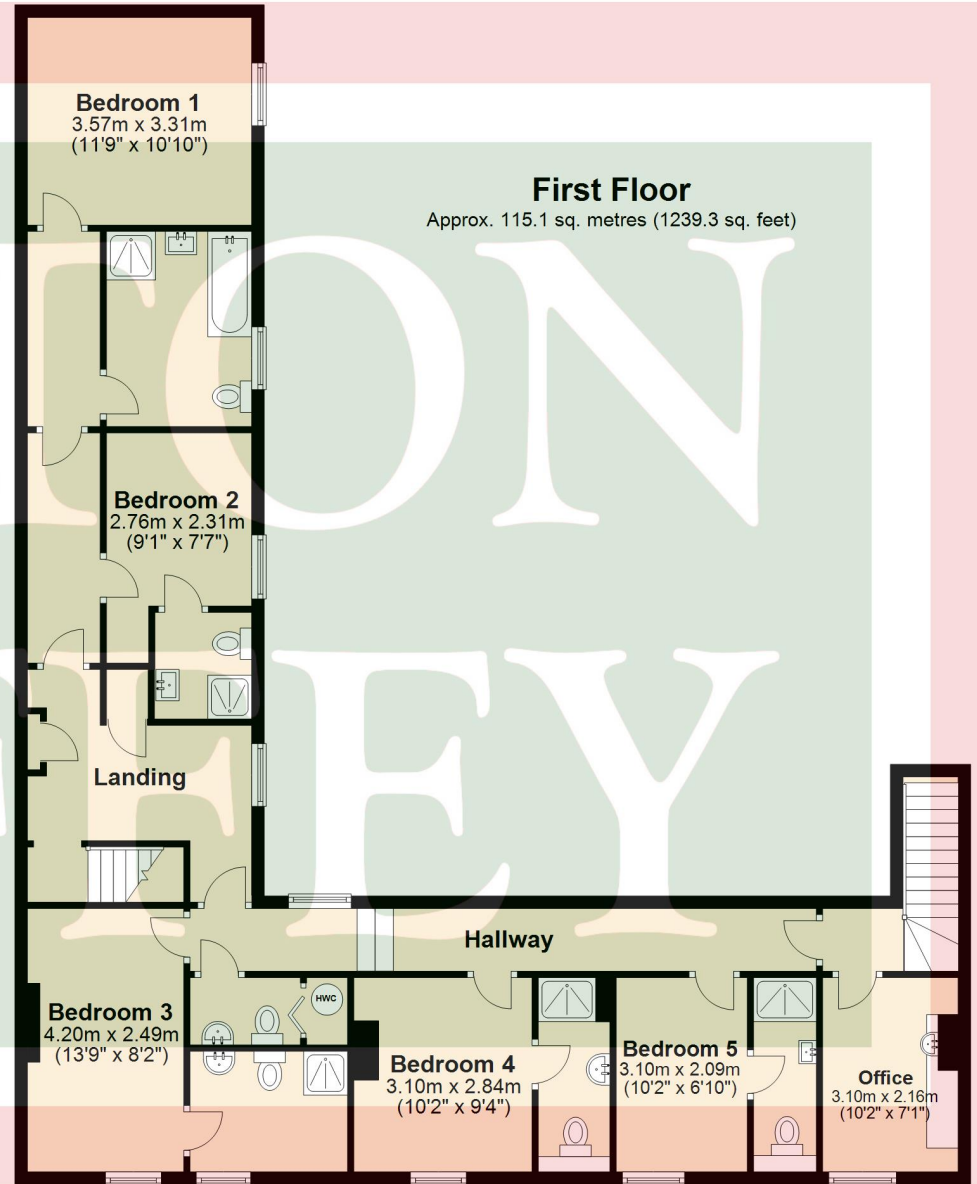
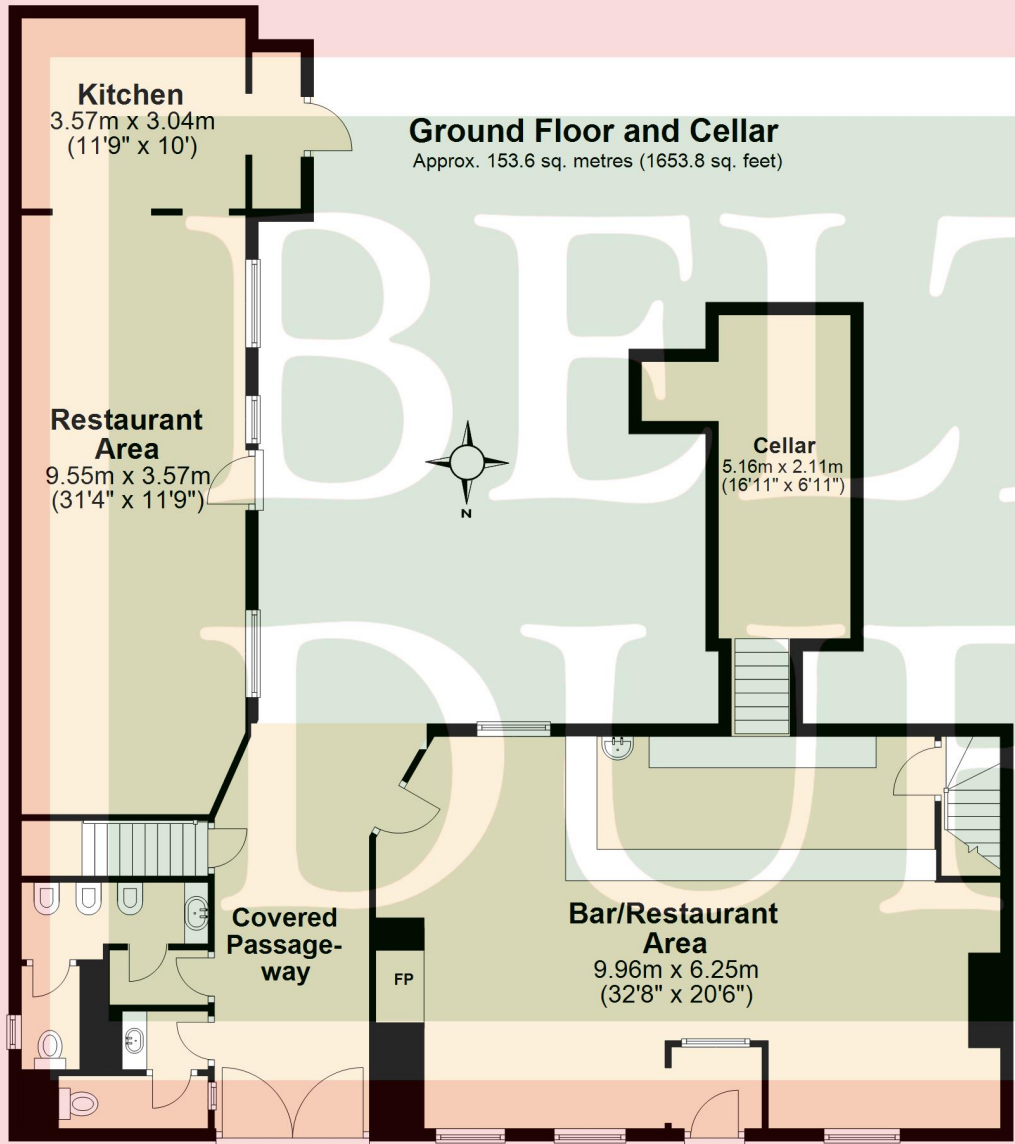
TENURE

This property is for sale Freehold.

VIEWING

Strictly by appointment with the agent.





Total area: approx. 268.8 sq. metres (2893.1 sq. feet)



BELTON DUFFEY

12-16 Blackfriars Street,
King's Lynn,
Norfolk, PE30 1NN.
T: 01553 770055
E: info@beltonduffey.com

3 Market Place,
Fakenham,
Norfolk, NR21 9AS.
T: 01328 855899
E: fakenham@beltonduffey.com

26 Staithe Street,
Wells-next-the-Sea,
Norfolk, NR23 1AF.
T: 01328 710666
E: wells@beltonduffey.com

www.beltonduffey.com

IMPORTANT NOTICES: 1. Whilst these particulars have been prepared in good faith to give a fair description of the property, these do not form any part of any offer or contract nor may they be regarded as statements of representation of fact. 2. Belton Duffey have not carried out a detailed survey, nor tested the services, appliances and specific fittings. All measurements or distances given are approximate only. 3. No person in the employment of Belton Duffey has the authority to make or give representation or warranty in respect of this property. Any interested parties must satisfy themselves by inspection or otherwise as to the correctness of any information given.

