



Main Road, Broomfield, Chelmsford, Essex, CM1 7BB

Council Tax Band D (Chelmsford City Council)



Guide Price £535,000 Freehold

Bond Residential are delighted to offer for sale this semi detached family home being sold with no onward chain situated within easy access of the Grammar Schools and Broomfield Hospital.

The property offers an entrance hall, ground floor WC, lounge, dining room, fitted kitchen and conservatory which enjoys views of the garden. To the first floor there are three bedrooms and a family bathroom with modern white suite. Outside the property benefits from off road parking which in turn leads to the garage. The established front & rear gardens are a real feature of this lovely family, being laid to lawn with mature shrubs & hedging to borders.

LOCATION

Set in the popular parish of Broomfield which is situated to the North of Chelmsford, Broomfield offers a popular primary school as well as Chelmer Valley High Schools. Both of Chelmsford's highly sought after grammar schools, King Edward VI grammar school and The County High School for girls are within a bus ride from the property along Main Road, Broomfield.

The parish of Broomfield offers a village like feel with its own Church and church green, two local pubs/restaurants, library, local news agents/convenience store, a football club and cricket club. Situated to the North of Chelmsford city centre, Broomfield offers a regular bus service to the city centre and mainline station which provides a direct service to London Liverpool St with a journey time as fast as 32 minutes.

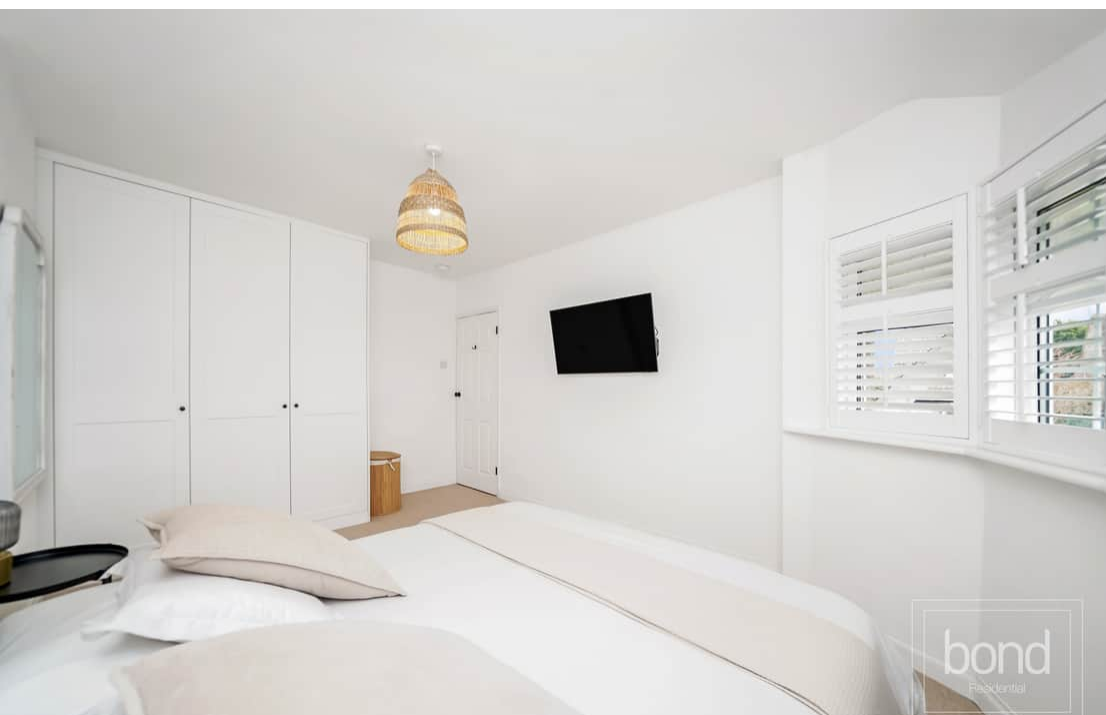
Chelmsford city centre offers a thriving nightlife with a selection of bars and a wide selection of places to eat from independent family restaurants to well known chain restaurants serving cuisines from around the world, Chelmsford features a comprehensive range of shopping facilities with its pedestrianised High Street, two shopping precincts and hugely popular Bond Street with John Lewis store.

Chelmsford is extremely popular with leisure enthusiasts with a selection of sports clubs and gyms including the recently refurbished Riverside Ice & Leisure. Chelmsford is renowned for its educational excellence and alongside the local schools, it offers two of the country's top performing grammar schools, Writtle agricultural college, Anglian Ruskin University and a selection of private schools.

- Character Semi Detached Family Home
- Conservatory
- Gas Central Heating
- Garage
- No Onward Chain
- Two Reception Rooms
- Fitted Kitchen
- Established Front & Rear Gardens
- Family Bathroom
- Sought After Parish Of Broomfield







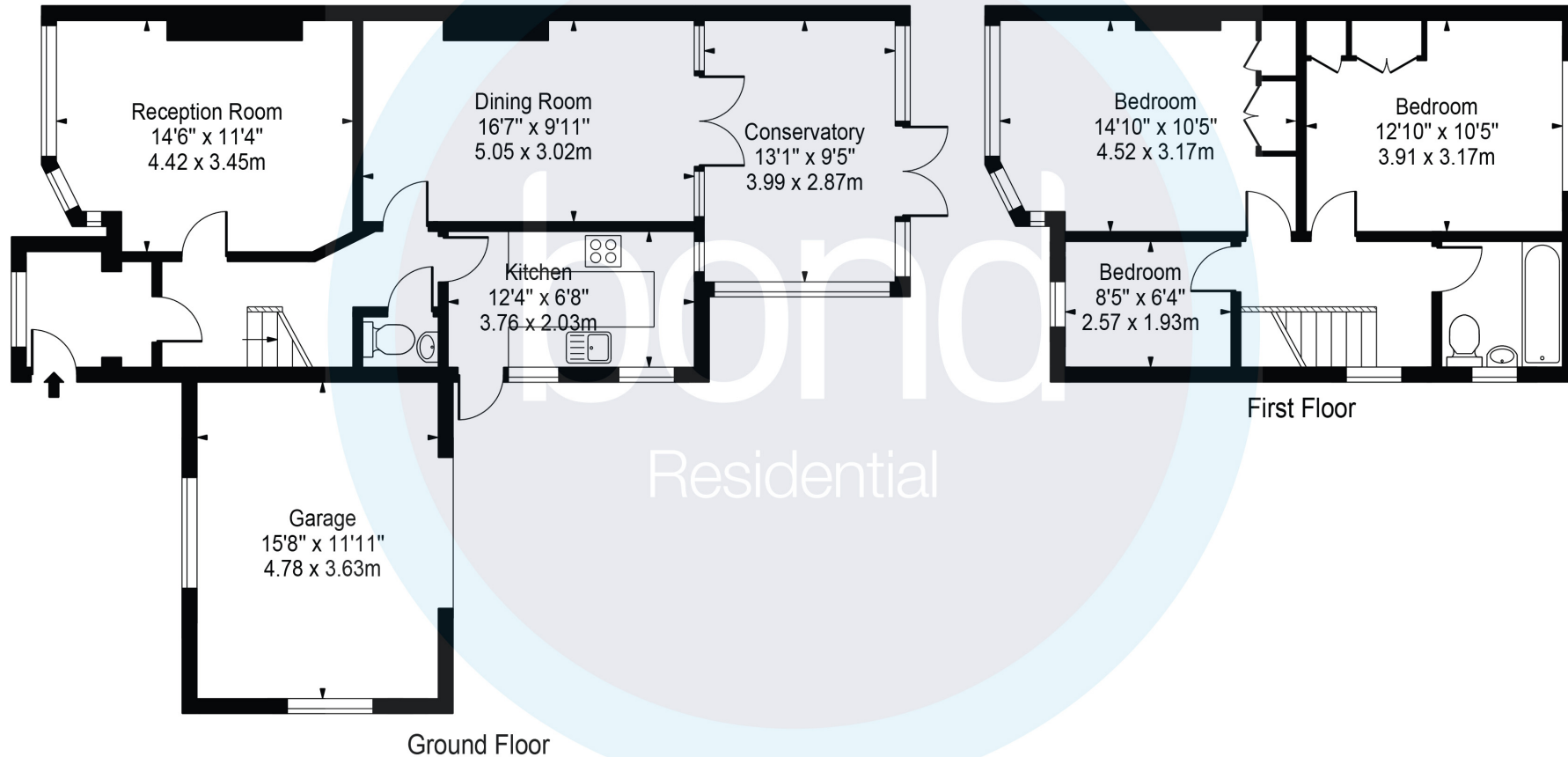


Main Road, Broomfield, Chelmsford, CM1 7BB

Approx. Gross Internal Area 1134 Sq Ft - 105.35 Sq M

(Excluding Garage)

Approx. Gross Internal Area Of Garage 187 Sq Ft - 17.35 Sq M



For Illustration Purposes Only - Not To Scale

This floor plan should be used as a general outline for guidance only and does not constitute in whole or in part an offer or contract. Any intending purchaser or lessee should satisfy themselves by inspection, searches, enquiries and full survey as to the correctness of each statement. Any areas, measurements or distances quoted are approximate and should not be used to value a property or be the basis of any sale or let.

78, New London Road,
Chelmsford, Essex, CM2 0PD
Telephone: 01245 500599
Website: www.bondresidential.co.uk

Consumer Protection from Unfair Trading Regulations 2008 and the Business Protection from Misleading Marketing Regulations 2008. Bond Residential have made every effort to ensure that consumers and/or businesses are treated fairly and provided with accurate material information as required by law. We have not tested any apparatus, equipment, fixture, fitting or any services and as such are unable to verify they are in working order, fit for their purpose, or within the ownership of the seller or landlord. Neither have we been able to check the legal documentation to verify the legal status of the property. We therefore advise potential buyers or tenants to verify these matters with their own solicitors or other advisers.

