

315 Vicarage Farm Road,
Hounslow, TW5 0DR

Tel: 02085707900
gavin@bluestateagents.co.uk



**Wentworth Crescent, Hayes, Greater
London, UB3 1NW**

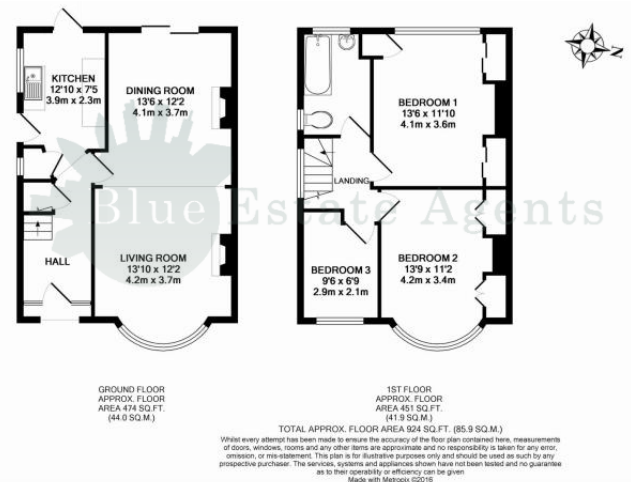
£550,000 Freehold

- Three Bedroom Semi Detached House For Sale
- Popular Location on Wentworth Crescent, UB3
- Large Open Family Room/ Dining Room
- Fitted Kitchen
- Good Size Bedrooms
- Large Rear Garden
- Off Street Parking Available
- Garage Included
- EPC Rating





Blue Estate Agents bring to market, a beautiful three bedroom semi-detached family home, located on the popular Wentworth Crescent, UB3. The property benefits from excellent living accommodation, including, a large lounge/diner, separate kitchen, two double bedrooms and generous single bedroom and a family Bathroom Suite. Outside, there is a large private rear garden, a garage which is accessible via the side alley and off street parking for up to two cars. The property is situated within close reach of Asda superstore as well as Hayes and Harlington Station. For further information or to book a viewing, please contact Blue Estate Agents



Living Room

4.2m x 3.7m (13' 9" x 12' 2")

Dining Room

4.1m x 3.7m (13' 5" x 12' 2")

Kitchen

3.9m x 2.3m (12' 10" x 7' 7")

Bedroom One

4.1m x 3.6m (13' 5" x 11' 10")

Bedroom Two

4.1m x 3.4m (13' 5" x 11' 2")

Bedroom Three

2.9m x 2.1m (9' 6" x 6' 11")

Disclaimer

Whilst we have endeavoured to prepare our sales particulars accurately none of the services, appliances or equipment have been tested. A buyer should satisfy themselves on such matters prior to purchase. Any measurements or distances mentioned in these particulars are for guide reference only. If such particulars are fundamental to a purchase, buyers should rely on their own enquiries. All enquiries should be directed to Blue Estate Agents in the first instance.