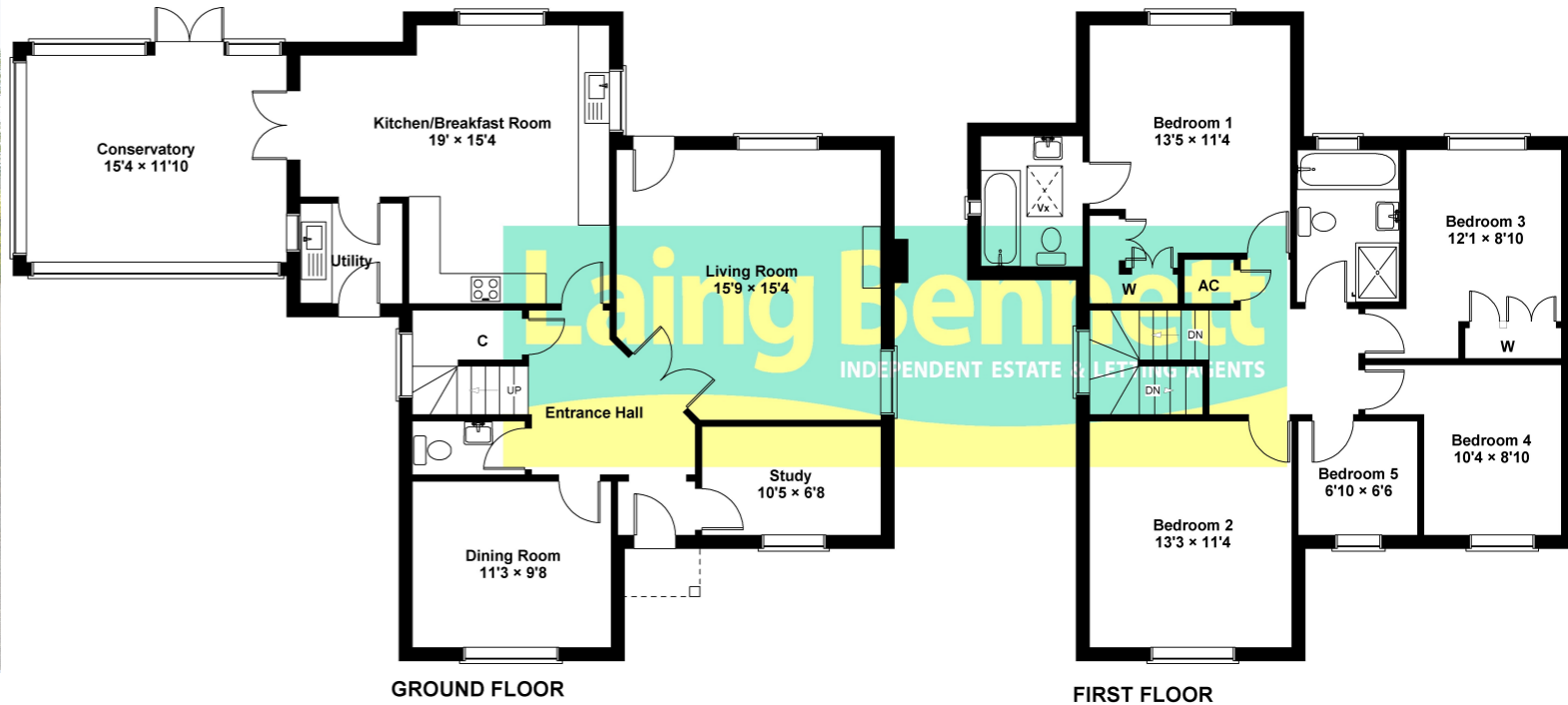




4 The Orchids, Canterbury Road, Etchinghill, Folkestone, Kent. CT18 8AR



SKETCH PLAN NOT TO SCALE FOR IDENTIFICATION ONLY
The placement and size of all walls, doors, windows, staircases and fixtures are only approximate and cannot be relied upon as anything other than an illustration for guidance purposes only. No representation has been made by the seller, the agent or PotterPlans
www.potterplans.co.uk

A substantial five bedroom executive style family home located on an exclusive development of just five houses built approximately twenty years ago tucked away at the end of a quiet cul de sac with glorious wrap around garden, driveway and double garage.
EPC Rating = C

Guide Price £735,000

