



Miller Homes, The Halston Mid at Leven Mill, Queensgate, Glenrothes, KY7 5QB

Three-Bedroom, New Build, Mid-Terrace Home, with Private Gardens and Parking Space

Up to date price and viewing info at mov8realestate.com/property



Property Description

A stunning and beautifully designed, three-bedroom, new build, mid-terrace home, with private gardens and parking space. Ideally located, in a modern and family-friendly, Miller Homes development in the village of Glenrothes, Fife.

Comprises an entrance hall, a living/dining room, a kitchen, three bedrooms, a family bathroom and a ground-floor WC.

The Halston at Leven Mill is part of an exclusive development, offering versatile accommodation set over two floors, allowing flexibility to create a comfortable home to fit modern family life.

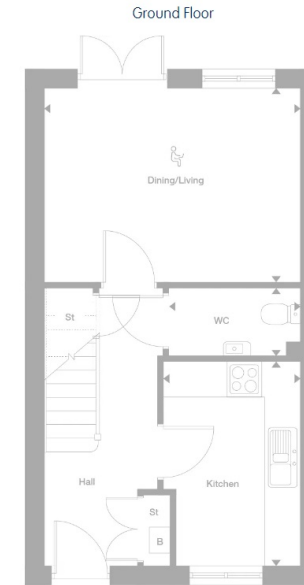
A modern family home, offering an impressive and adaptable floor plan, double glazing, and superb storage provision throughout. This energy-efficient home also includes French doors to a private garden, an allocated parking space, and well-kept communal grounds within the development.

A canopied entrance opens into a welcoming hallway, affording access to the stairs leading to the upper hall and throughout the ground floor, including a convenient WC. Spanning the entire width of the home, with maximum practicality and convenience, a spacious living room benefits from generous glazing, with a large window and French patio doors leading to the garden, offering plentiful natural light, as well as ample space for a dining area, creating an ideal setting for modern family life; whilst, the kitchen is set to the front, perfectly designed and sized.

On the upper floor, the principal bedroom benefits from generous room size, including a built-in wardrobe and plenty of space for freestanding furnishing. Two further well-presented bedrooms are set to the rear, offering flexible and versatile spaces, with bedroom three offering the potential for a home office. Completing the accommodation, a family-sized bathroom is perfectly designed for a three-piece suite.

Materials within the advert have been supplied by Miller Homes.

PLEASE NOTE: Images are for illustration only, please consult the on-site development sales manager for plot-specific finishes.



Office space area	
Dining/Living	4.24m x 3.28m
Kitchen	2.274m x 3.448m
WC	2.188m x 1.129m



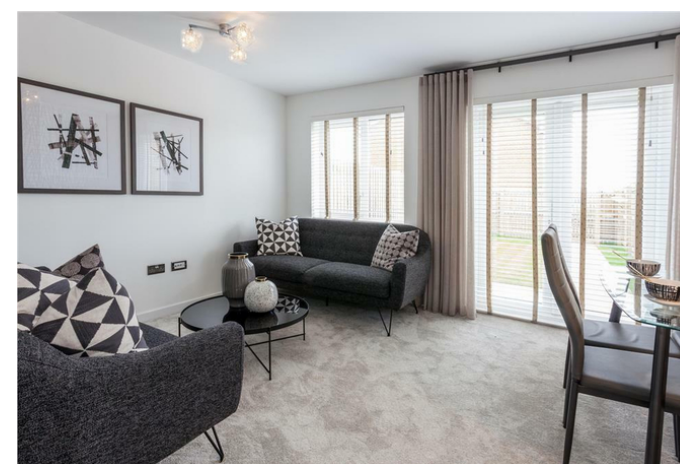
Office space area	
Principal Bedroom	3.578m x 2.484m
Bedroom 2	2.002m x 3.461m
Bedroom 3	2.214m x 2.263m
Bathroom	2.114m x 1.935m

Area Description

Located in Glenrothes, Fife, lies Leven Mill. With trees bordering the River Leven this development of two, three and four-bedroom energy-efficient homes is nestled to the side, perfectly placed for couples and families alike. With excellent transport links to the rest of Fife, Edinburgh, Dundee and Perth by car, railway and bus, the development is ideally positioned. There are fantastic amenities and supermarkets close by as well as the Kingdom Shopping Centre only 2 miles away which offers a range of popular high street stores and restaurants. Fountain Spa Leisure Club and the

Balbirnie Fitness Centre are just a 5-minute drive from the development. The development is also perfectly placed to enjoy the great outdoors with large open space on your doorstep, close to pathways leading to the River Leven and Riverside Park which offer pleasant woodland walks and play areas for children. Running, walking, and cycling routes are in abundance too, making this the perfect place for families to enjoy the fresh air.





Our Services

- Free pre-sale property valuations
- Great value fixed estate agency fees
- Extensive buyer matching database
- Purchase and sale conveyancing

Contact Us

0345 646 0208

sales@mov8realestate.com

www.mov8.com

Head Office

6 Redheughs Rigg, Edinburgh, EH12 9DQ

Glasgow Office

77 Renfrew Street, Glasgow, G2 3BZ



Estate Agents and Solicitors

