



27 Mckinnon Drive, Mayfield, Dalkeith, Midlothian, EH22 5RF

Immaculately Presented, One-Bedroom, Modern, End-Terrace House

Up to date price and viewing info at [mov8realestate.com/property](https://www.mov8realestate.com/property)



Property Description

Immaculately presented, one-bedroom, modern, end-terrace, house, with a generous garden. Set on a corner plot, located in the established residential area of Mayfield, near Dalkeith, Midlothian.

Comprises a living room, kitchen, first-floor hall, a double bedroom and a shower room.

In move-in condition, highlights include a stylish integrated kitchen, a modern bathroom, contemporary flooring and lighting. In addition, there is gas central heating, double glazing and good integrated storage, including a loft space.

A private garden is enclosed by tall privacy hedging and features a lawn, decked terraces and a large storage shed.

There is residential parking to the side, with additional unrestricted street parking bays, good transport links and open green spaces.

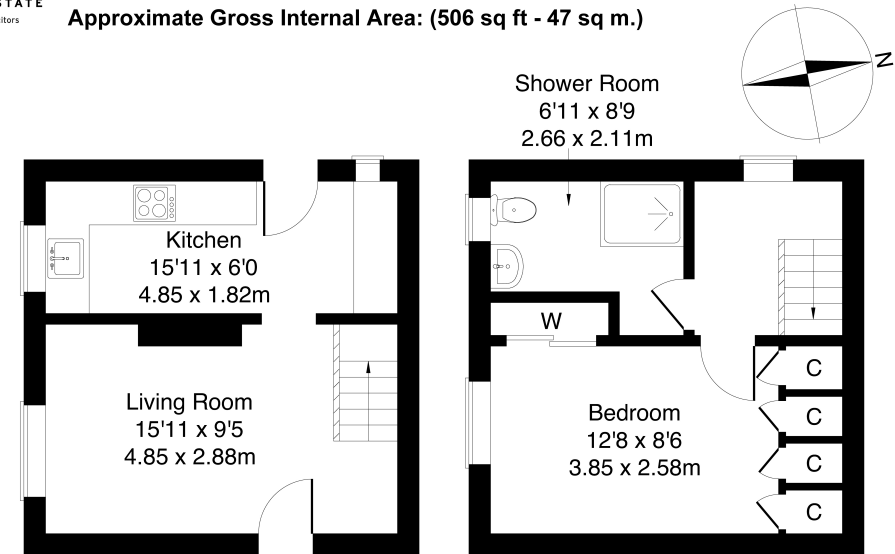
The main door opens into a bright, modern kitchen, featuring stylish flooring, recessed spotlighting and dual-aspect natural light. Fitted units and worktops include a tiled surround, a sink with a drainer, an integrated washing machine, a dishwasher, a fridge/freezer, an electric oven and a ceramic hob. Accessed from the kitchen, a good-sized living room has a side aspect window and includes a bespoke media wall, wood-effect flooring, a central light fitting, and a cupboard.

A carpeted stairway leads to the first-floor landing, with skyline views and access to the bedroom, shower room and loft hatch. The bedroom has a side aspect window and includes a TV point, an integrated mirrored wardrobe and further built-in storage cupboards. A stylish fully-tiled bathroom includes a fitted suite, a walk-in cubicle, a ladder-style radiator and recessed spotlighting.



27 Mckinnon Drive, Mayfield, Dalkeith EH22 5RJ

Approximate Gross Internal Area: (506 sq ft - 47 sq m.)



Ground Floor

First Floor

Legal Disclaimer : Floor-plan and measurements are for illustrative guidance only, and not intended to form part of any contract.

Area Description

Mayfield is located less than three miles from the centre of Dalkeith, and offers a variety of leisure and recreation facilities, including the Mayfield Leisure Centre, Ozone Action Sports, Ryze Edinburgh, and nearby Newbattle Golf Course. The village has a range of convenience shopping along with a choice of pubs and restaurants, and the area also offers good primary and secondary schooling locally. The popular town of Dalkeith provides

additional amenities and services, and has a thriving high street along with various supermarkets. There is a regular bus link from Westhouses Road operating to and from Edinburgh and the neighbouring Midlothian towns and villages, and the city bypass is within easy reach, linking with the wider motorway network and the A1.





Our Services

- Free pre-sale property valuations
- Great value fixed estate agency fees
- Extensive buyer matching database
- Purchase and sale conveyancing

Contact Us

0345 646 0208

sales@mov8realestate.com

www.mov8.com

Head Office

6 Redheughs Rigg, Edinburgh, EH12 9DQ

Glasgow Office

77 Renfrew Street, Glasgow, G2 3BZ



Estate Agents and Solicitors

