

## **Booth Drive, Staines-upon-Thames, TW18 1PR**

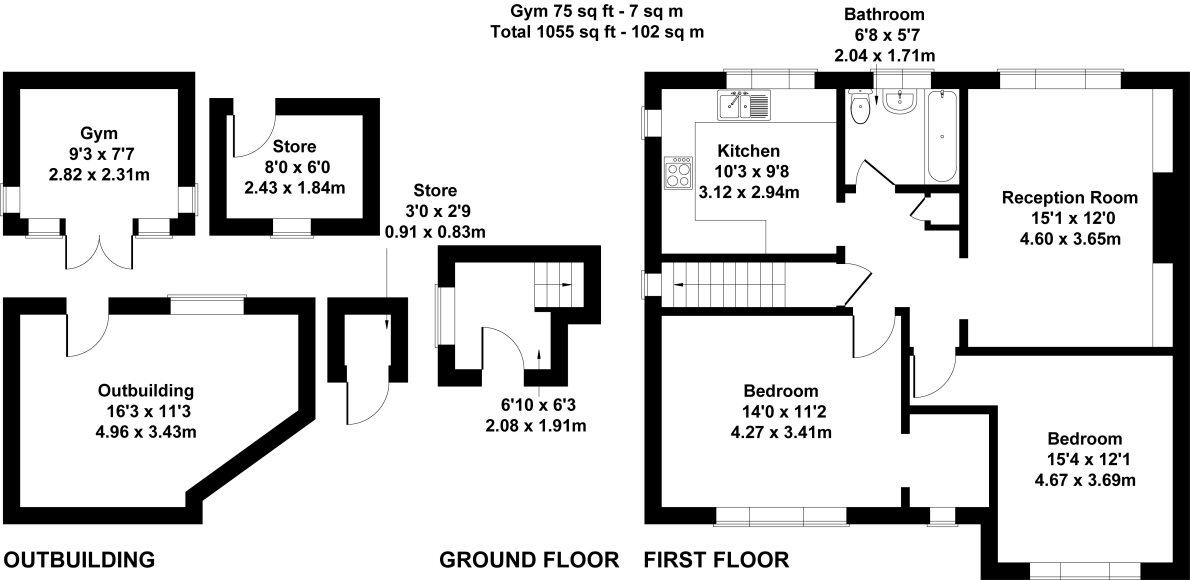
### **Guide Price £325,000**



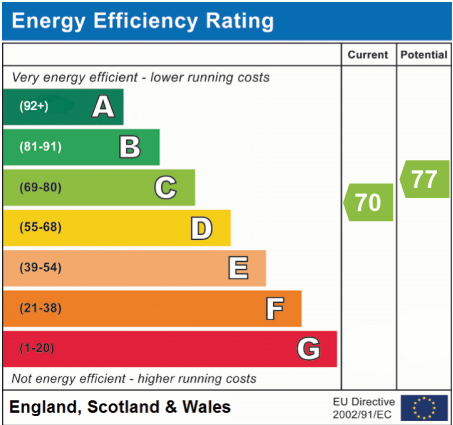
- Excellent Size Bedrooms
- Outbuilding With Power
- Gas Central Heating
- Complete Chain Going Forward
- Private Rear Garden
- Loft Space
- Full Double Glazing
- An Ideal First Time Buy

Booth Avenue, Staines, TW18 1PR

Approximate Gross Internal Area  
Main House 764 sq ft - 75 sq m  
Outbuilding 161 sq ft - 15 sq m  
Store 54 sq ft - 5 sq m  
Gym 75 sq ft - 7 sq m  
Total 1055 sq ft - 102 sq m



This floorplan is for guidance only and does not form part of an offer or contract.  
Buyers or tenants should verify all details through inspection, searches, and surveys.  
Measurements are approximate and should not be relied upon for valuation or transactions.  
Produced by Plan Portal.  
[www.evolve-london.co.uk](http://www.evolve-london.co.uk)



We have not tested the services or domestic appliances so we cannot verify that they are in working order. The buyer is advised to obtain verification from their solicitor or surveyor. These particulars form no part of any offer or contract and their accuracy cannot be guaranteed.