



Flat 9 Clybane, Mooragh Promenade, Ramsey, Isle of Man. IM8 3BA

Extremely spacious one bedroom apartment occupying the whole ground floor of Clybane on Mooragh Promenade with superb sea and coastal views offered with no onward chain.



£179,950 Leasehold

PROPERTY DESCRIPTION

Discover coastal living at its finest with this exceptionally spacious one-bedroom apartment occupying the entire ground floor of Clybane, a characterful building set on Mooragh Promenade in Ramsey.

Boasting an impressive 22ft Lounge/Diner with panoramic views over Ramsey Bay, this property is a rare find for those seeking space, style, and location. Perfect for entertaining or simply relaxing, the main living area easily accommodates both a generous sofa suite and dining table – all set against the stunning coastal backdrop. Step through to the modern white gloss kitchen, complete with a central island and beautifully crafted ornate timber pillars, subtly dividing the space while maintaining an open, airy flow.

This apartment continues to impress with a contemporary W.C., plus a four-piece bathroom suite featuring a steam shower. The large double bedroom to the rear offers peace and privacy, with patio doors leading directly to a communal garden. Offered with no onward chain, this property presents a unique opportunity for first-time buyers, downsizers, or those seeking a stylish seaside retreat.

Viewings are highly recommended to appreciate the generous proportions and prime location of this lovely flat.

FEATURES

- Remarkably Spacious Ground Floor Apartment
- Occupies the Entire Ground Floor
- Superb Sea and Coastal Views
- 22ft Lounge/Diner with Bay Window
- Modern Breakfast Kitchen Area
- Generous Double Bedroom plus Bathroom and W.C.
- Communal Garden to Rear
- No Onward Chain



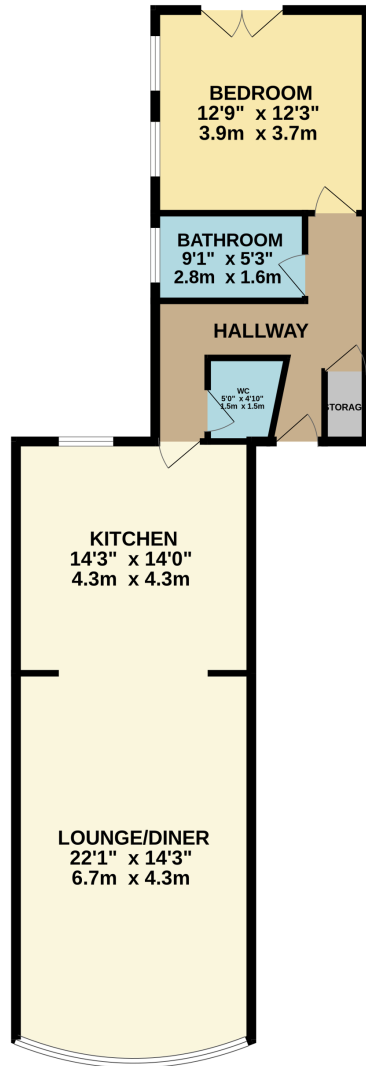
Property Images



FLOORPLAN



GROUND FLOOR



Whilst every attempt has been made to ensure the accuracy of the floorplan contained here, measurements of doors, windows, rooms and any other items are approximate and no responsibility is taken for any error, omission or mis-statement. This plan is for illustrative purposes only and should be used as such by any prospective purchaser. The services, systems and appliances shown have not been tested and no guarantee as to their operability or efficiency can be given.
Made with Metropix ©2025

DISCLAIMER: Whilst Manxmove Ltd believe that these details are correct, neither Manxmove Ltd or their clients guarantee their accuracy in any way. Consequently, these details are not to be used to form part of any legally binding contract. Prospective purchasers or tenants are advised to visit this property to satisfy themselves as to the correctness of these details. Please note, we use wide angle camera lenses in order to show as much of each room as possible. This is not intended to mislead any prospective purchasers or tenants in any way and an honest verbal description is always available prior to viewing if required.

Manxmove Estate Agents - Douglas
Victoria Road, Douglas, IM2 4HD
01624 619966
info@manxmove.im