



Guide Price £400,000 Freehold



Widecombe Road, Mottingham, London SE9 4HQ



PROPERTY DESCRIPTION

GUIDE PRICE • £400,000 - £425,000 • RE/MAX SELECT are delighted to offer for sale this immaculate terraced house located in a popular location, close to schools, amenities, and transport links. This property comprises 3 bedrooms, large living room, fitted kitchen, conservatory, and family bathroom.

Further benefits include double glazing, gas central heating, and large rear garden with garden room.

Total Internal Area approx: 919.45 sq ft (85.42 sq m).





ROOM DESCRIPTIONS

Ground Floor

Living / Dining Room

Wood flooring, radiator, feature fireplace, double glazed bay windows.

Kitchen

Wood-effect flooring; range of wall and base units with complementary worktops; stainless steel sink with mixer tap; stainless steel extractor hood; space and connections for free-standing cooker; space and connections for fridge/freezer; space and connections for dishwasher.

Conservatory

Tiled flooring; radiator, space and connections for washing machine; space and connections for dryer; double glazed windows; double glazed doors leading to rear garden.

Family Bathroom

Wood-effect flooring; panelled bath with mixer tap and thermostatic rainfall shower fitting; vanity unit with wash-hand basin; w/c, heated-towel rail, double glazed frosted window.

First Floor

Landing

Carpeted; access to loft.

Bedroom

Carpeted, radiator, built-in wardrobes, storage cupboard, double glazed windows.

Bedroom

Carpeted, radiator, built-in wardrobes, double glazed windows.

Bedroom

Carpeted, radiator, double glazed windows.

External

Front Driveway

Off street parking; block-paved.

Rear Garden

Patio, lawn, access to garden room.

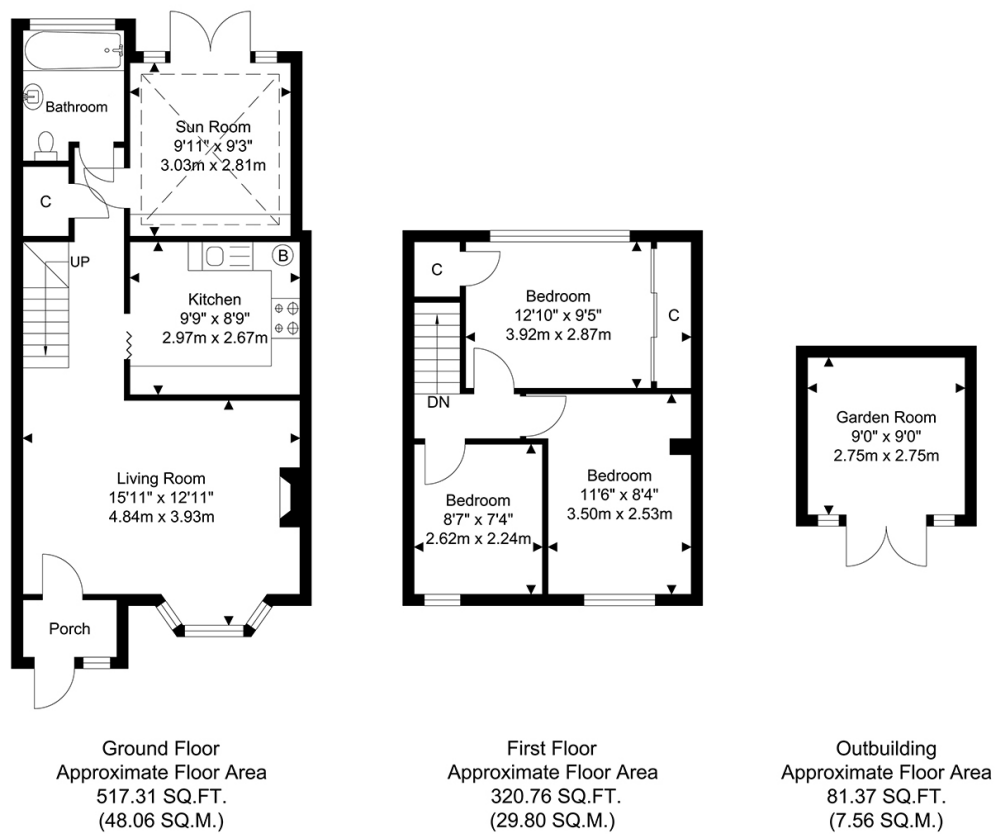
Garden Room

Electrical power.

Information

- 0.6 miles (approx) to Mottingham Station
- 1 miles (approx) to New Eltham Station
- 0.4 iles (approx) to Coldharbour Leisure Centre
- Council Tax: Band C

FLOORPLAN



TOTAL APPROX FLOOR AREA 919.45 SQ. FT / 85.42 SQ. M
For Identification Purposes Only.

