



Westleigh Drive,

Bickley , Kent. BR1 2PN

Tenure: Freehold

4 Bedrooms | 2 Reception Rooms | 2 Bathrooms

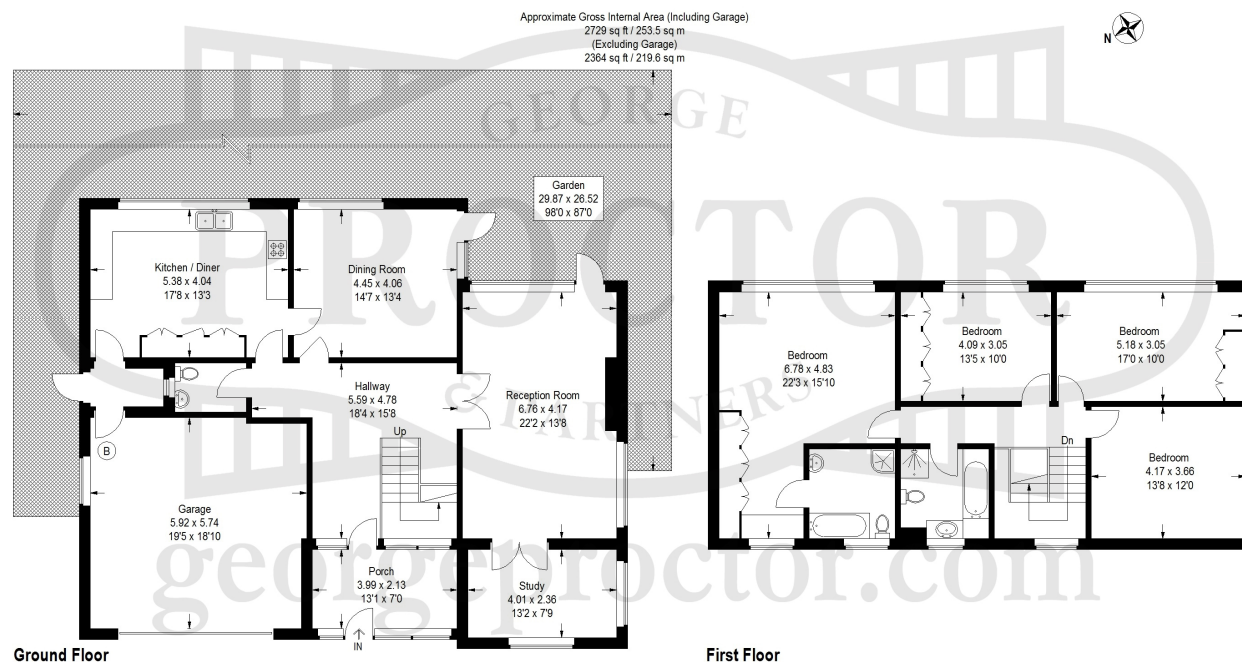


Set within a desirable cul-de-sac, with a road frontage approaching 98', is this attractive post-war four-bedroom detached home, which in our opinion offers generous and versatile living space with further potential for enlargement, subject to the usual consents. The ground floor features a welcoming reception room, separate dining room, kitchen and WC, while upstairs provides four well-proportioned bedrooms, including one with an en-suite, plus a family bathroom. Completing the appeal are a secluded rear garden, double garage and driveway parking. EPC Rating; TBC

Enquiries To:

T: 020 8467 2252

E: beosales@georgeproctor.com



These particulars whilst believed to be accurate are made without responsibility on the part of the vendor or agents, their accuracy is not guaranteed nor do they form part of any contract and no warranty is given. Services or appliances have not been tested and no guarantee can be given as to their operation, buyers should seek professional advice where necessary. All measurements are approximate and may be rounded to the nearest three inches (10 cm). Floor plans, where shown, are indicative only. Any photographs included may be taken with the use of a wide angle lens. If there is a matter of particular interest please contact us for further information, especially before travelling any distance to view. Map reproduced by permission of Geographers A-Z Map Co Ltd. Licence No. A0514. This map is based upon Ordnance Survey maps with the permission of the controller of Her Majesty's Stationary Office.

The Bickley Estate Office

Southborough Road, Bickley, Kent, BR1 2EB