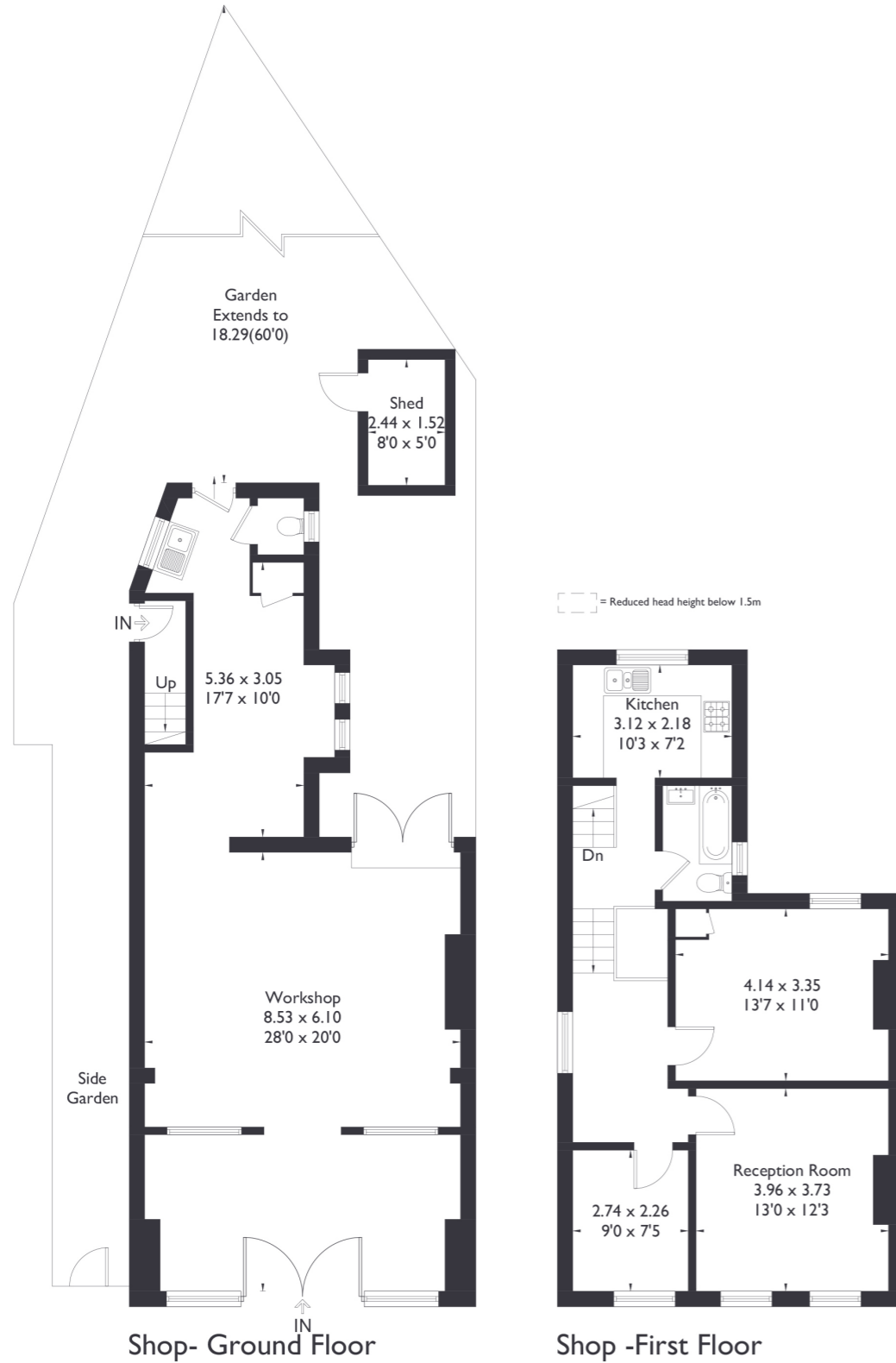


Church Road, W7

Approximate Floor Area = 134.7 sq m / 1450 sq ft
(Excluding Shed)



2 BEDROOM FLAT

Church Road, W7

£650,000

Welcome to this fantastic two bedroom, one bathroom residential property, situated above a commercial space, both of which are available for sale. The flat features generously sized rooms filled with natural light and a private west-facing garden, perfect for enjoying the outdoors.

FEATURES

- Freehold Building
- Two Bedrooms
- One Bathroom
- Investment Opportunity
- Residential Property Above Commercial
- Hanwell Station (Elizabeth Line)
- EPC Rating E



2 BEDROOM FLAT

Church Road, W7

£650,000

On the ground floor, you'll find a former upholsterer's shop brimming with potential, making this an excellent investment opportunity.

Ideally located next to Hanwell Station and within walking distance of all the local amenities, this property offers endless possibilities. Don't miss out on this exceptional opportunity with great potential for future development! EPC Rating E.

