



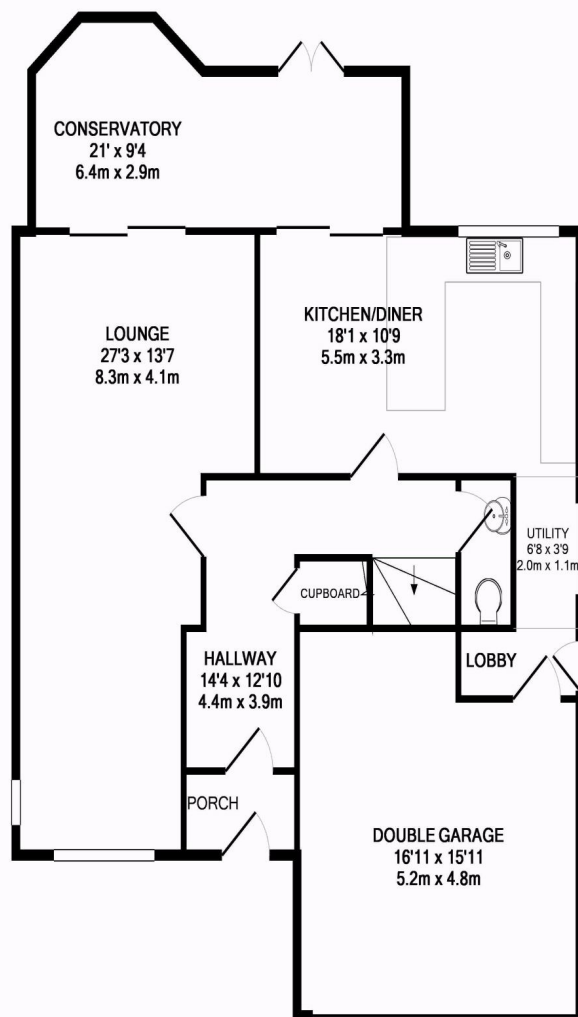
23 Farthing Drive, Letchworth Garden City, Hertfordshire, SG6 2TR

£699,950

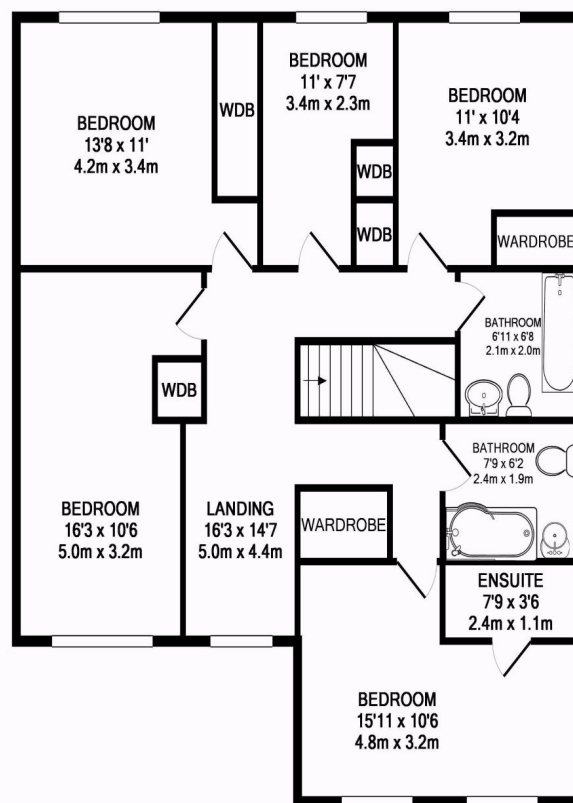
We are delighted to offer CHAIN FREE this impressive five bedroom family home, tucked away in a quiet cul de sac, within the truly sought after area of Lordship farm. Very spacious and well appointed throughout, it has picturesque views of open countryside beyond.

Briefly comprising a large lounge and a generous conservatory, stylishly fitted open plan Kitchen & diner, separate utility, cloakroom, master bed with en suite shower, two further family size bathrooms, one recently beautifully updated, integral double width garage & driveway for two cars, and enclosed rear garden.





GROUND FLOOR
APPROX. FLOOR
AREA 1138 SQ.FT.
(105.7 SQ.M.)



1ST FLOOR
APPROX. FLOOR
AREA 975 SQ.FT.
(90.5 SQ.M.)

TOTAL APPROX. FLOOR AREA 2112 SQ.FT. (196.2 SQ.M.)

Whilst every attempt has been made to ensure the accuracy of the floor plan contained here, measurements of doors, windows, rooms and any other items are approximate and no responsibility is taken for any error, omission, or mis-statement. This plan is for illustrative purposes only and should be used as such by any prospective purchaser. The services, systems and appliances shown have not been tested and no guarantee as to their operability or efficiency can be given
Made with Metropix ©2012

- SPACIOUS & FLEXIBLE ACCOMMODATION
- FIVE BEDROOMS | THREE BATHROOMS
- IDEAL LOCATION FOR SCHOOLS LOCAL AMENITIES AND TRANSPORT LINKS
- WELL PRESENTED & MAINTAINED THROUGHOUT
- OPEN PLAN ASPECT LIVING/DINING SPACE
- AMPLE OFF ROAD PARKING AND INTEGRAL DOUBLE GARAGE
- PRIVATE SOUTH FACING GARDEN
- CHAIN FREE - AVAILABLE TO VIEW NOW
- COUNCIL TAX BAND E | EPC BAND D

